


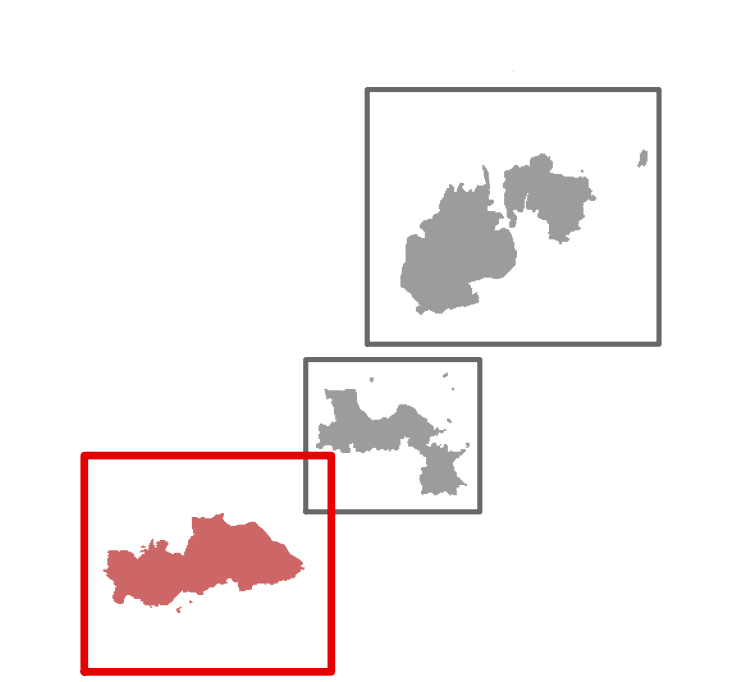
115°10'W 115°9'30"W 115°9'W 115°8'30"W 115°8'W 115°7'30"W 115°7'W

**SUP. REPAIR**  
TENMILE

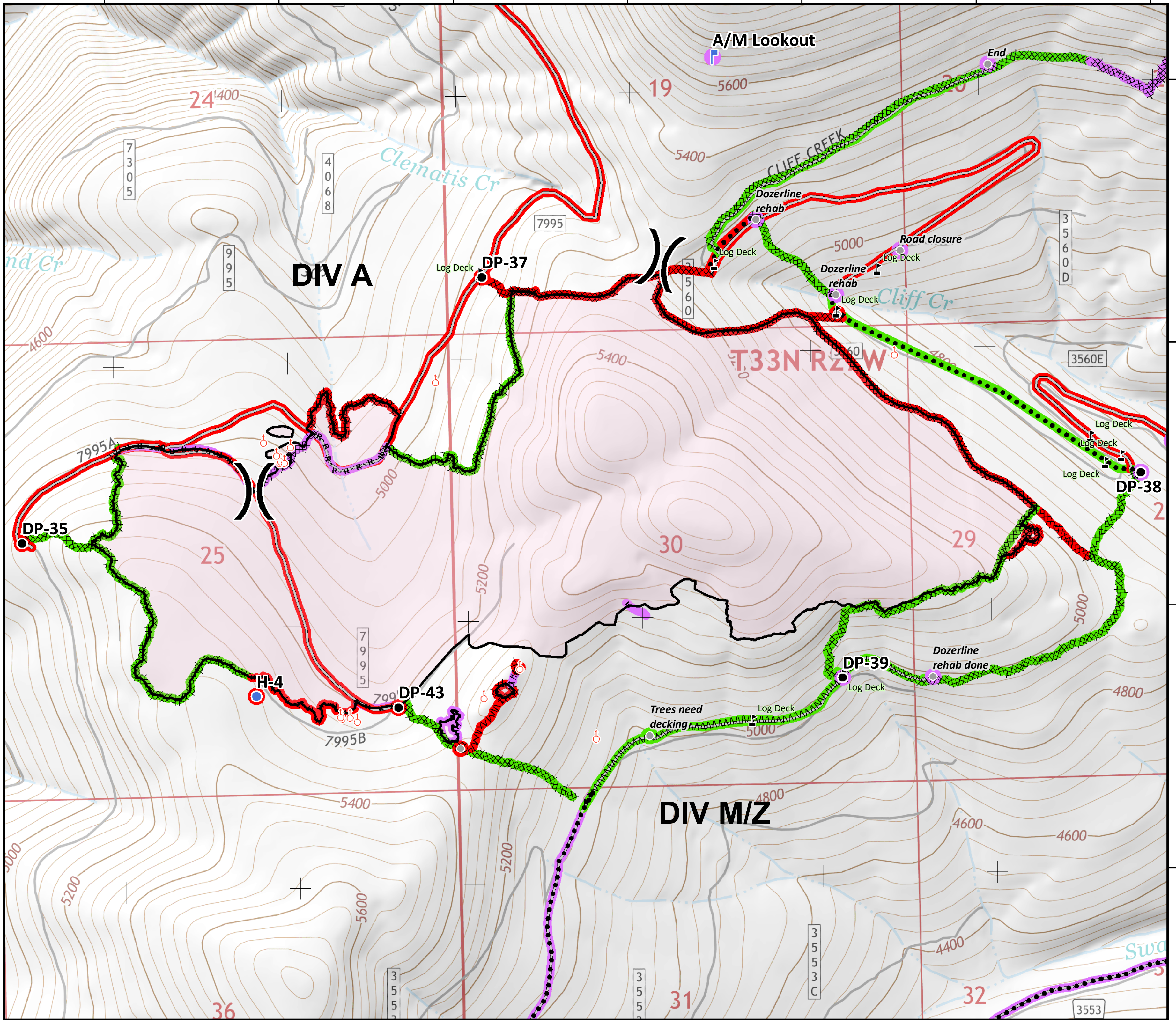
**Sterling Complex**  
MT-KNF-205  
1,405 acres  
**Tenmile**  
MT-KNF-174  
681 acres  
August 29, 2018



**Team 5**



- Completed - Inspected
- Repair Needed
- Unknown
- ▬ Completed - Inspected
- ▬ Repair Needed
- ▬ Unknown
- Drop Point
- Helispot
- ▬ Lookout
- ⊕ Spot Fire
- ▬ Value at Risk
- Other
- ) Division Break
- ▬ Completed Line
- ▬ Completed Dozer Line
- H-H-H Completed Hand Line
- R-R-R-R Road as Completed Line
- MMMM Line Break Completed
- Planned Secondary Line
- ▬ Access or Improved Road



**Coordinate System:** NAD 1983 UTM Zone 11N  
**Map Scale:** 1:8,500, 1 inch = 708 feet

