

# Sterling Complex

MTKNF-205  
1405 acres

# Tenmile

MTKNF-174  
681 acres

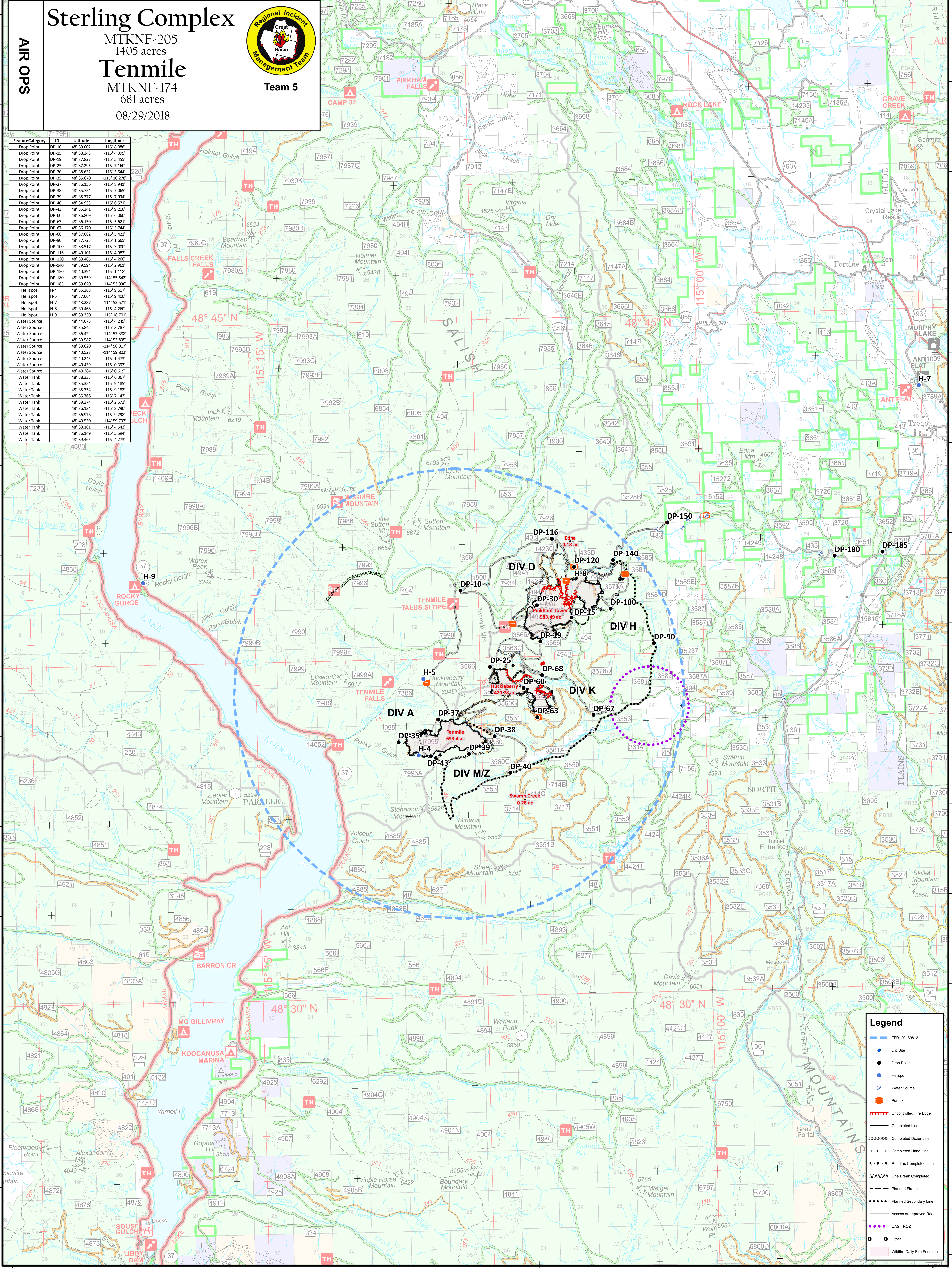
08/29/2018



Team 5

AIR OPS

Feature Category	ID	Latitude	Longitude
Drop Point	DP-10	48° 39.002'	-115° 8.086'
Drop Point	DP-15	48° 38.343'	-115° 4.395'
Drop Point	DP-20	48° 37.827'	-115° 5.455'
Drop Point	DP-25	48° 37.295'	-115° 7.167'
Drop Point	DP-30	48° 36.632'	-115° 5.544'
Drop Point	DP-35	48° 35.670'	-115° 10.278'
Drop Point	DP-37	48° 36.156'	-115° 8.941'
Drop Point	DP-38	48° 35.754'	-115° 7.065'
Drop Point	DP-39	48° 35.377'	-115° 5.423'
Drop Point	DP-40	48° 34.933'	-115° 5.571'
Drop Point	DP-43	48° 35.341'	-115° 9.210'
Drop Point	DP-60	48° 36.809'	-115° 6.060'
Drop Point	DP-63	48° 36.150'	-115° 5.621'
Drop Point	DP-67	48° 36.170'	-115° 3.744'
Drop Point	DP-68	48° 37.082'	-115° 5.423'
Drop Point	DP-90	48° 37.725'	-115° 1.665'
Drop Point	DP-100	48° 38.517'	-115° 3.080'
Drop Point	DP-116	48° 40.101'	-115° 4.983'
Drop Point	DP-120	48° 39.465'	-115° 4.266'
Drop Point	DP-140	48° 39.594'	-115° 2.961'
Drop Point	DP-150	48° 40.394'	-115° 1.118'
Drop Point	DP-180	48° 39.552'	-114° 55.542'
Drop Point	DP-185	48° 39.607'	-114° 53.936'
Hellspot	H-4	48° 35.368'	-115° 9.617'
Hellspot	H-5	48° 37.064'	-115° 9.400'
Hellspot	H-7	48° 43.287'	-114° 52.571'
Hellspot	H-8	48° 39.468'	-115° 4.267'
Hellspot	H-9	48° 39.337'	-115° 19.802'
Water Source	WS-1	48° 44.075'	-115° 4.249'
Water Source	WS-2	48° 35.845'	-115° 3.787'
Water Source	WS-3	48° 34.422'	-114° 57.388'
Water Source	WS-4	48° 39.587'	-114° 53.895'
Water Source	WS-5	48° 39.620'	-114° 56.017'
Water Source	WS-6	48° 40.537'	-114° 59.802'
Water Source	WS-7	48° 40.245'	-115° 1.473'
Water Source	WS-8	48° 40.439'	-115° 0.397'
Water Source	WS-9	48° 40.284'	-115° 0.619'
Water Tank	WT-1	48° 38.233'	-115° 6.367'
Water Tank	WT-2	48° 35.354'	-115° 9.185'
Water Tank	WT-3	48° 35.357'	-115° 9.182'
Water Tank	WT-4	48° 35.766'	-115° 7.143'
Water Tank	WT-5	48° 39.274'	-115° 2.573'
Water Tank	WT-6	48° 36.134'	-115° 8.790'
Water Tank	WT-7	48° 36.976'	-115° 9.298'
Water Tank	WT-8	48° 40.530'	-114° 59.797'
Water Tank	WT-9	48° 36.149'	-115° 4.547'
Water Tank	WT-10	48° 36.149'	-115° 5.594'
Water Tank	WT-11	48° 39.465'	-115° 4.273'
Water Tank	WT-12	4880	



**Legend**

- TFR 20180812
- Dip Site
- Drop Point
- Hellspot
- Water Source
- Pumpkin
- Uncompleted Fire Edge
- Completed Line
- Completed Dozer Line
- Completed Hand Line
- H · H · H Completed Hand Line
- R · R · R Road as Completed Line
- M/M/M/M/M Line Break Completed
- Planned Fire Line
- Planned Secondary Line
- Access or Improved Road
- UAS - ROZ
- UAS - ROZ
- Wildfire Daily Fire Perimeter