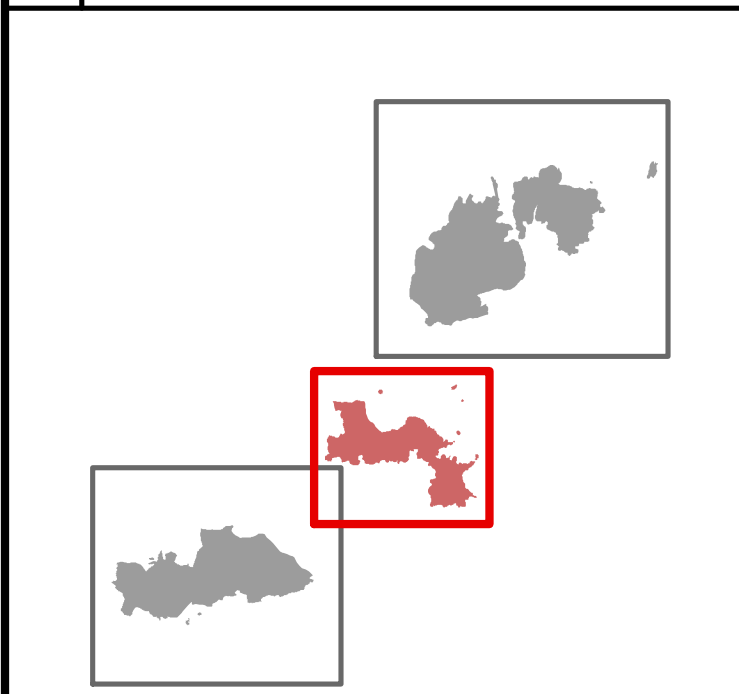
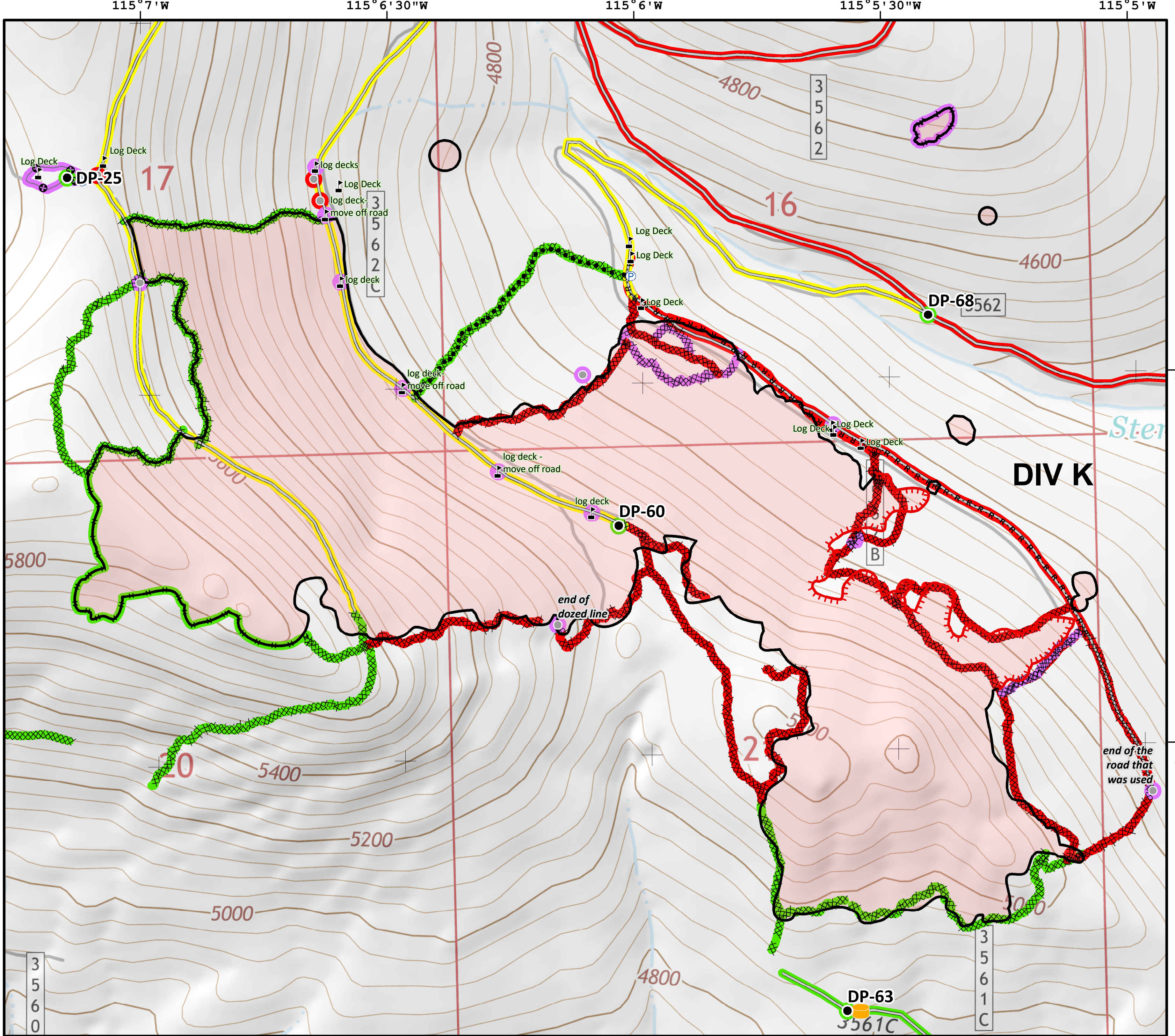


Sterling Complex
 MT-KNF-205
 1,405 acres
Tenmile
 MT-KNF-174
 681 acres
 September 9, 2018



- Completed - Inspected
- Repair Needed
- Unknown
- ~ Completed - Inspected
- ~ In Progress
- ~ Repair Needed
- ~ Unknown
- Drop Point
- Ⓟ Pump
- 🍠 Pumpkin
- ⚠ Value at Risk
- Other
- 🔴 Uncontrolled Fire Edge
- Completed Line
- 🔲 Completed Dozer Line
- ⋯ Completed Hand Line
- ⋯ Road as Completed Line
- ⋯ Planned Secondary Line
- Access or Improved Road
- ⊕ Other



Coordinate System: NAD 1983 UTM Zone 11N
Map Scale: 1:6,000, 1 inch = 500 feet

N ID T3 Team GIS
 9/9/2018, 08:12 Hrs
SUP. REPAIR