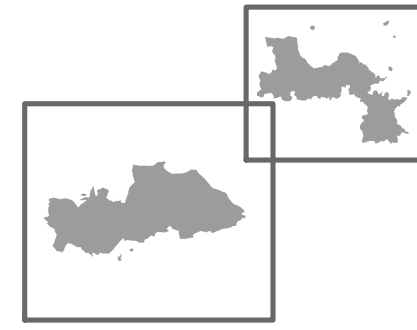
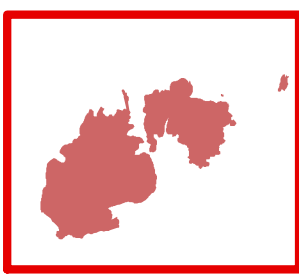
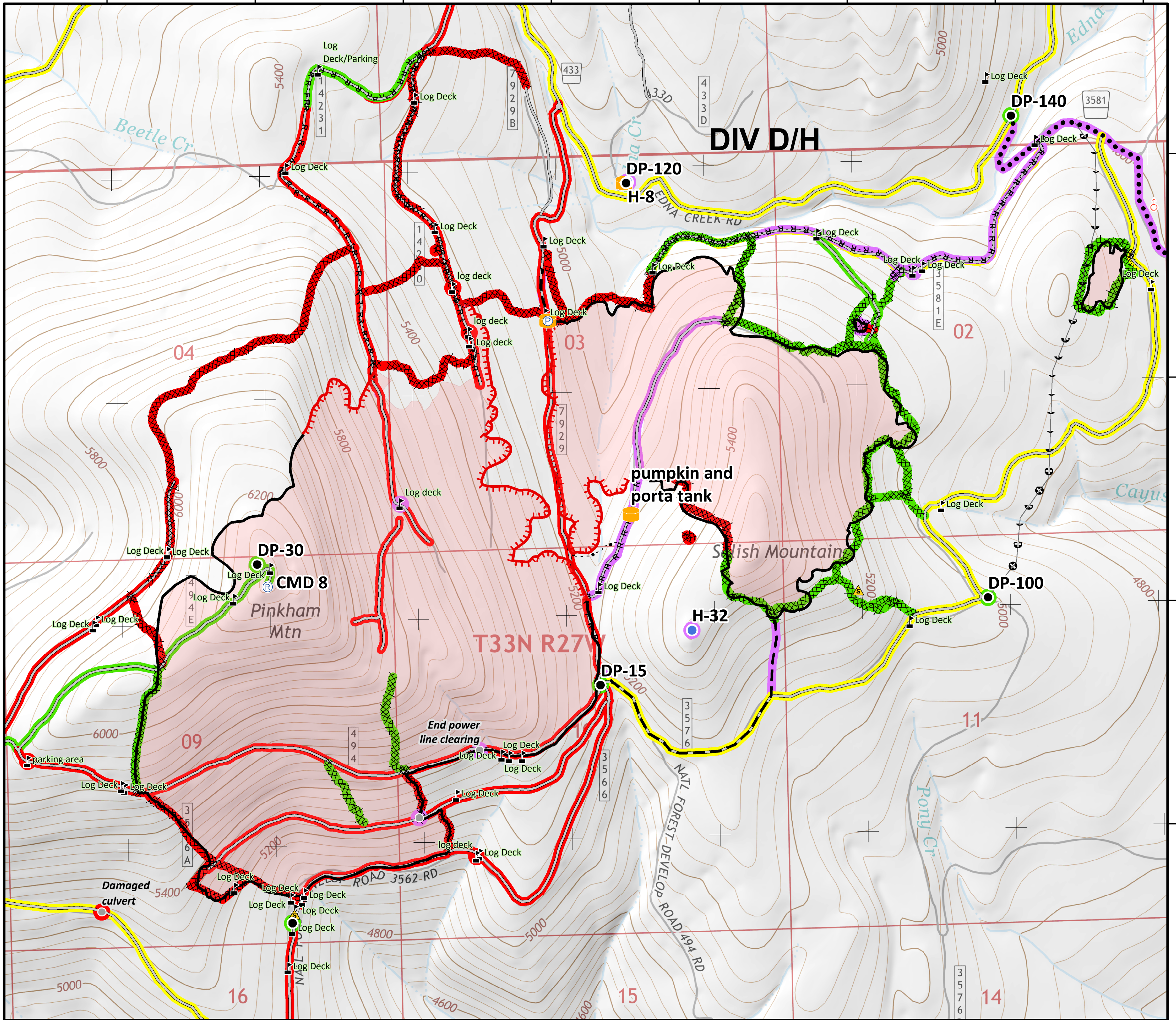


115° 6' W 115° 5' 30" W 115° 5' W 115° 4' 30" W 115° 4' W 115° 3' 30" W 115° 3' W 115° 2' 30" W

SUP. REPAIR
PINKHAM TOWER
Sterling Complex
MT-KNF-205
1,405 acres
Tenmile
MT-KNF-174
681 acres
September 9, 2018

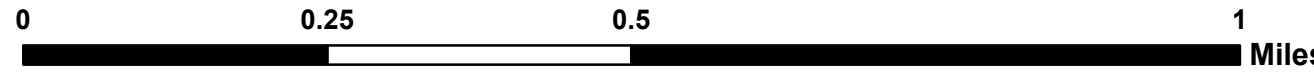


- Completed - Inspected
- Repair Needed
- Other - See Comments
- Unknown
- ~ Completed - Inspected
- ~ In Progress
- ~ Repair Needed
- ~ Unknown
- Drop Point
- Helispot
- P Pump
- R Repeater
- ▲ Safety Zone
- ⊕ Spot Fire
- Pumpkin
- ▲ Value at Risk
- Other
- ~ Uncontrolled Fire Edge
- ~ Completed Line
- ~ Completed Dozer Line
- R-R-R-R Road as Completed Line
- - - Planned Fire Line
- Planned Secondary Line
- Access or Improved Road
- · - · Highlighted Manmade Feature
- ⊕ Other



48° 39' 30" N
48° 39' N
48° 38' 30" N
48° 38' N

Coordinate System: NAD 1983 UTM Zone 11N
Map Scale: 1:10,000, 1 inch = 833 feet



N ID T3 Team GIS
9/9/2018, 08:13 Hrs
SUP. REPAIR