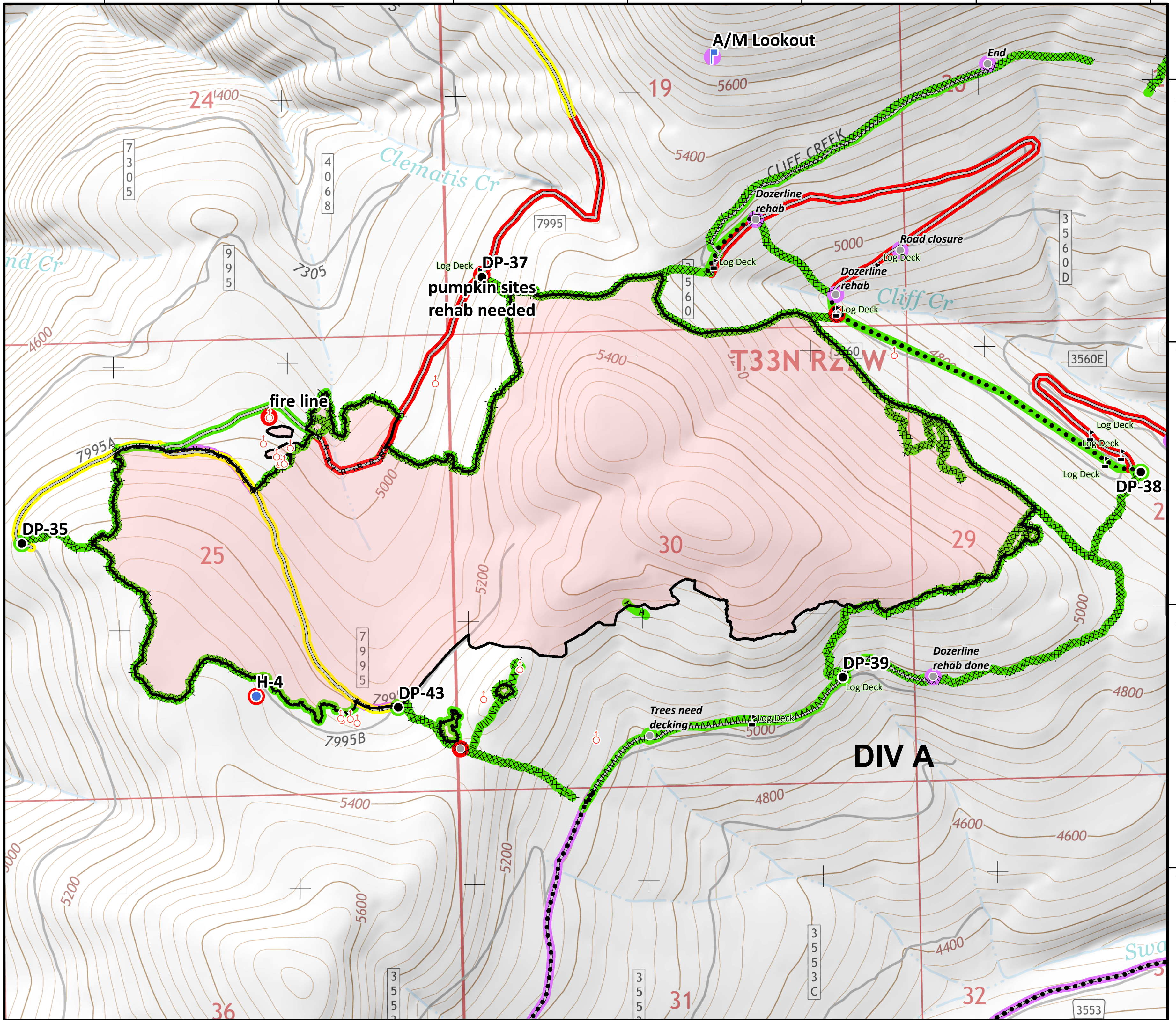
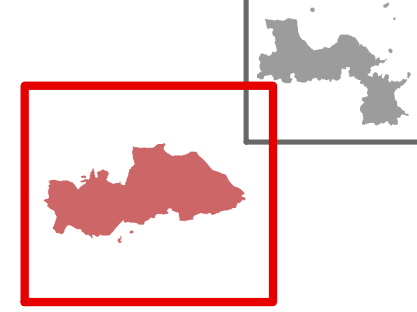


115°10'W 115°9'30"W 115°9'W 115°8'30"W 115°8'W 115°7'30"W 115°7'W



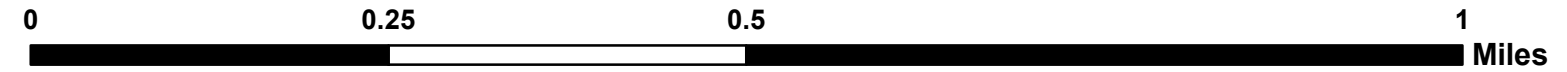
48°36'30"N 48°36'N 48°35'30"N 48°35'N

SUP. REPAIR
TENMILE
Sterling Complex
MT-KNF-205
1,405 acres
Tenmile
MT-KNF-174
681 acres
September 11, 2018



- Completed - Inspected
- Repair Needed
- Unknown
- ~ Completed - Inspected
- ~ In Progress
- ~ Repair Needed
- ~ Unknown
- Drop Point
- Helispot
- Landmark
- ⌚ Lookout
- ♂ Spot Fire
- ⚠ Value at Risk
- Other
- Completed Line
- ⌘ Completed Dozer Line
- ⋯ Completed Hand Line
- ⋯ Road as Completed Line
- ⋯ Line Break Completed
- ⋯ Planned Secondary Line
- Access or Improved Road

Coordinate System: NAD 1983 UTM Zone 11N
Map Scale: 1:8,500, 1 inch = 708 feet



N ID T3 Team GIS
9/11/2018, 10:12 Hrs
SUP. REPAIR