

# Sterling Complex

MTKNF-205  
1405 acres

## Tenmile

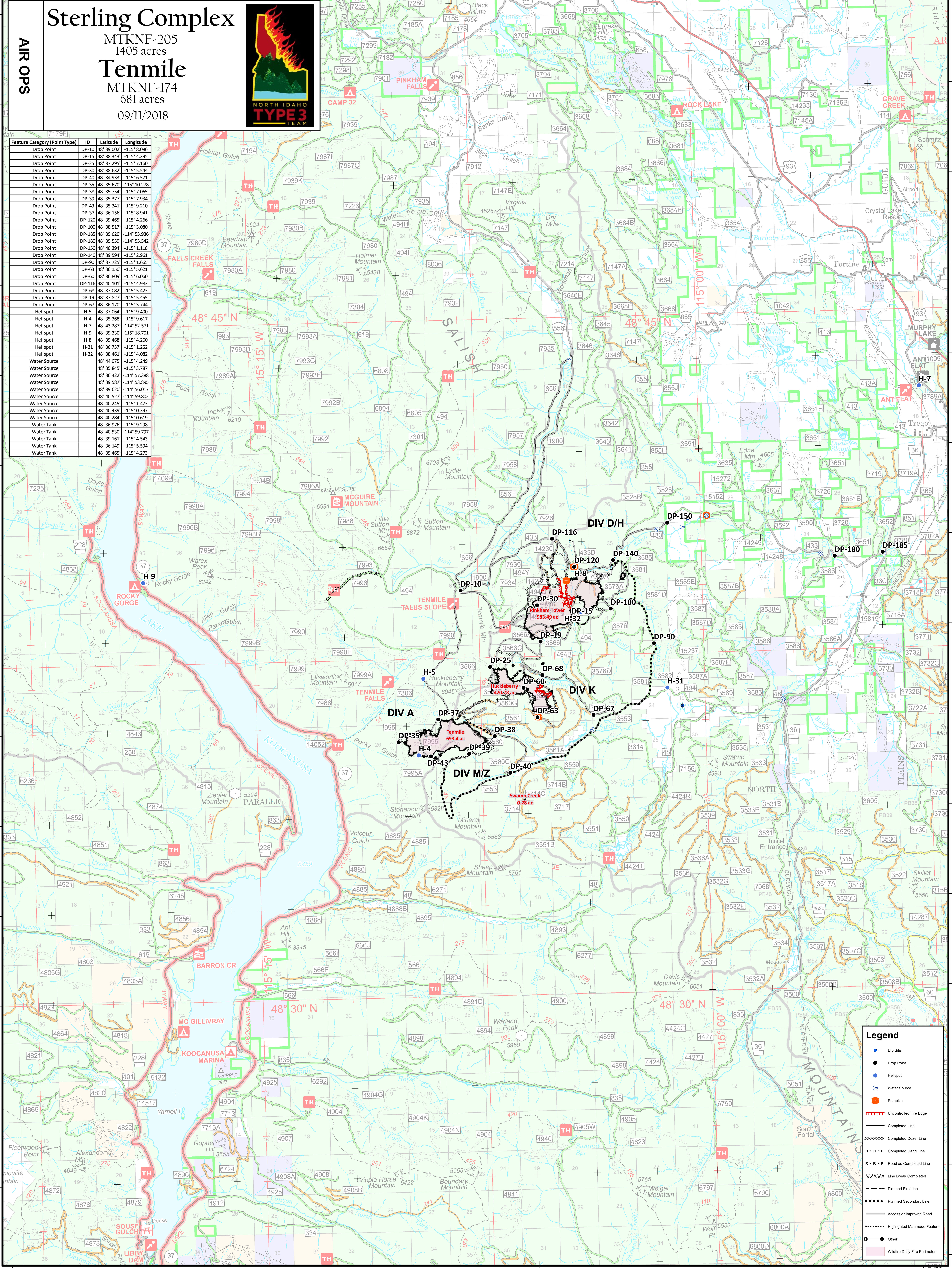
MTKNF-174  
681 acres

09/11/2018

AIR OPS



Feature Category (Point Type)	ID	Latitude	Longitude
Drop Point	DP-10	48° 39' 00.2"	-115° 8' 08.6"
Drop Point	DP-15	48° 38' 34.3"	-115° 4' 39.5"
Drop Point	DP-25	48° 37' 29.5"	-115° 7' 16.0"
Drop Point	DP-30	48° 38' 6.3"	-115° 5' 54.4"
Drop Point	DP-40	48° 34' 9.3"	-115° 6' 57.1"
Drop Point	DP-35	48° 35' 6.7"	-115° 10' 27.8"
Drop Point	DP-38	48° 35' 7.5"	-115° 7' 06.5"
Drop Point	DP-39	48° 35' 37.7"	-115° 7' 9.34"
Drop Point	DP-43	48° 35' 34.1"	-115° 9' 21.0"
Drop Point	DP-37	48° 36' 15.6"	-115° 8' 9.41"
Drop Point	DP-120	48° 39' 46.5"	-115° 4' 26.6"
Drop Point	DP-100	48° 38' 51.7"	-115° 3' 28.0"
Drop Point	DP-185	48° 39' 6.2"	-114° 53' 39.8"
Drop Point	DP-180	48° 39' 55.9"	-114° 55' 54.2"
Drop Point	DP-150	48° 40' 39.4"	-115° 1' 11.8"
Drop Point	DP-140	48° 39' 59.4"	-115° 2' 9.61"
Drop Point	DP-90	48° 37' 7.2"	-115° 1' 6.65"
Drop Point	DP-63	48° 36' 15.0"	-115° 5' 6.21"
Drop Point	DP-60	48° 36' 8.09"	-115° 6' 0.60"
Drop Point	DP-116	48° 40' 1.01"	-115° 4' 9.83"
Drop Point	DP-68	48° 37' 0.82"	-115° 5' 4.23"
Drop Point	DP-19	48° 37' 8.27"	-115° 5' 4.55"
Drop Point	DP-67	48° 36' 1.70"	-115° 3' 7.44"
Helispot	H-5	48° 37' 0.64"	-115° 9' 4.00"
Helispot	H-4	48° 35' 3.68"	-115° 9' 6.17"
Helispot	H-7	48° 43' 2.87"	-114° 52' 57.1"
Helispot	H-9	48° 39' 3.30"	-115° 18' 7.01"
Helispot	H-8	48° 39' 4.68"	-115° 4' 2.60"
Helispot	H-31	48° 36' 7.37"	-115° 1' 2.52"
Helispot	H-32	48° 38' 4.61"	-115° 4' 0.82"
Water Source		48° 44' 0.75"	-115° 4' 2.49"
Water Source		48° 35' 8.45"	-115° 3' 7.87"
Water Source		48° 39' 4.22"	-114° 53' 39.8"
Water Source		48° 39' 5.87"	-114° 53' 39.8"
Water Source		48° 39' 6.20"	-114° 56' 01.7"
Water Source		48° 40' 5.27"	-114° 59' 8.02"
Water Source		48° 40' 2.45"	-115° 1' 4.73"
Water Source		48° 40' 4.39"	-115° 0' 3.97"
Water Source		48° 40' 2.84"	-115° 0' 6.19"
Water Tank		48° 36' 9.76"	-115° 9' 2.98"
Water Tank		48° 40' 5.30"	-114° 59' 7.97"
Water Tank		48° 39' 1.61"	-115° 4' 5.43"
Water Tank		48° 36' 1.49"	-115° 5' 5.94"
Water Tank		48° 39' 4.65"	-115° 4' 2.73"



### Legend

- Dip Site
- Drop Point
- Helispot
- ⊕ Water Source
- ⊕ Pumpkin
- Uncontrolled Fire Edge
- Completed Line
- Completed Dozer Line
- Completed Hand Line
- Road as Completed Line
- Line Break Completed
- Planned Fire Line
- Planned Secondary Line
- Access or Improved Road
- Highlighted Manmade Feature
- Other
- Wildfire Daily Fire Perimeter