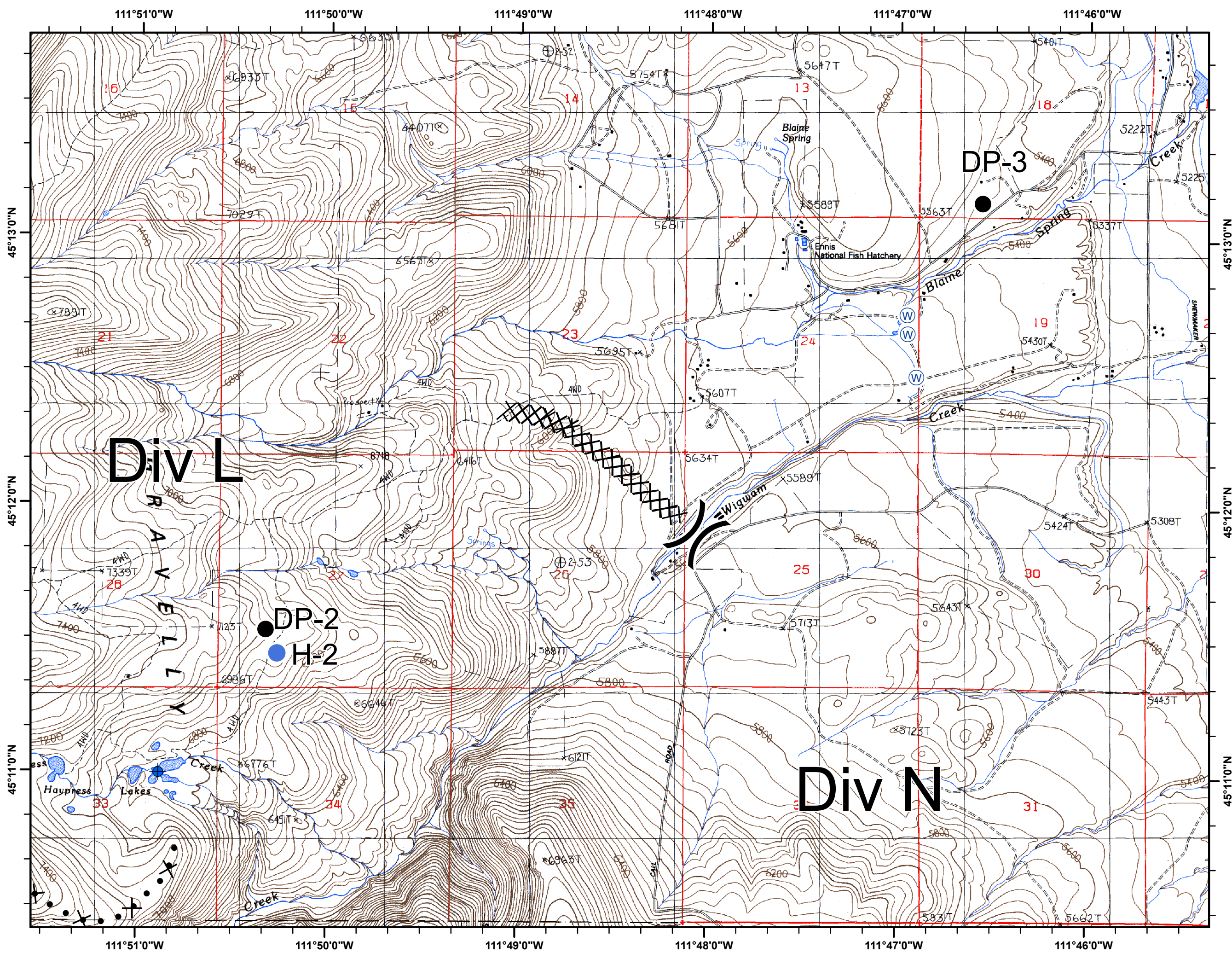
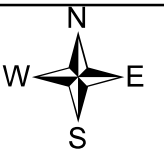
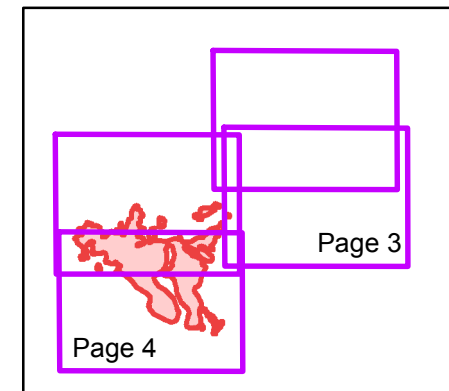


WIGWAM FIRE
Incident Action Plan Map
MT-BDF-003305
Aug 16, 2018

Page 1 of 4

- Legend
- Drop Point
 - Helispot
 - () Division
 - Uncontrolled Fire Edge
 - XXXXX Completed Doser Line

Map Index



111°56'0"W

111°55'0"W

111°54'0"W

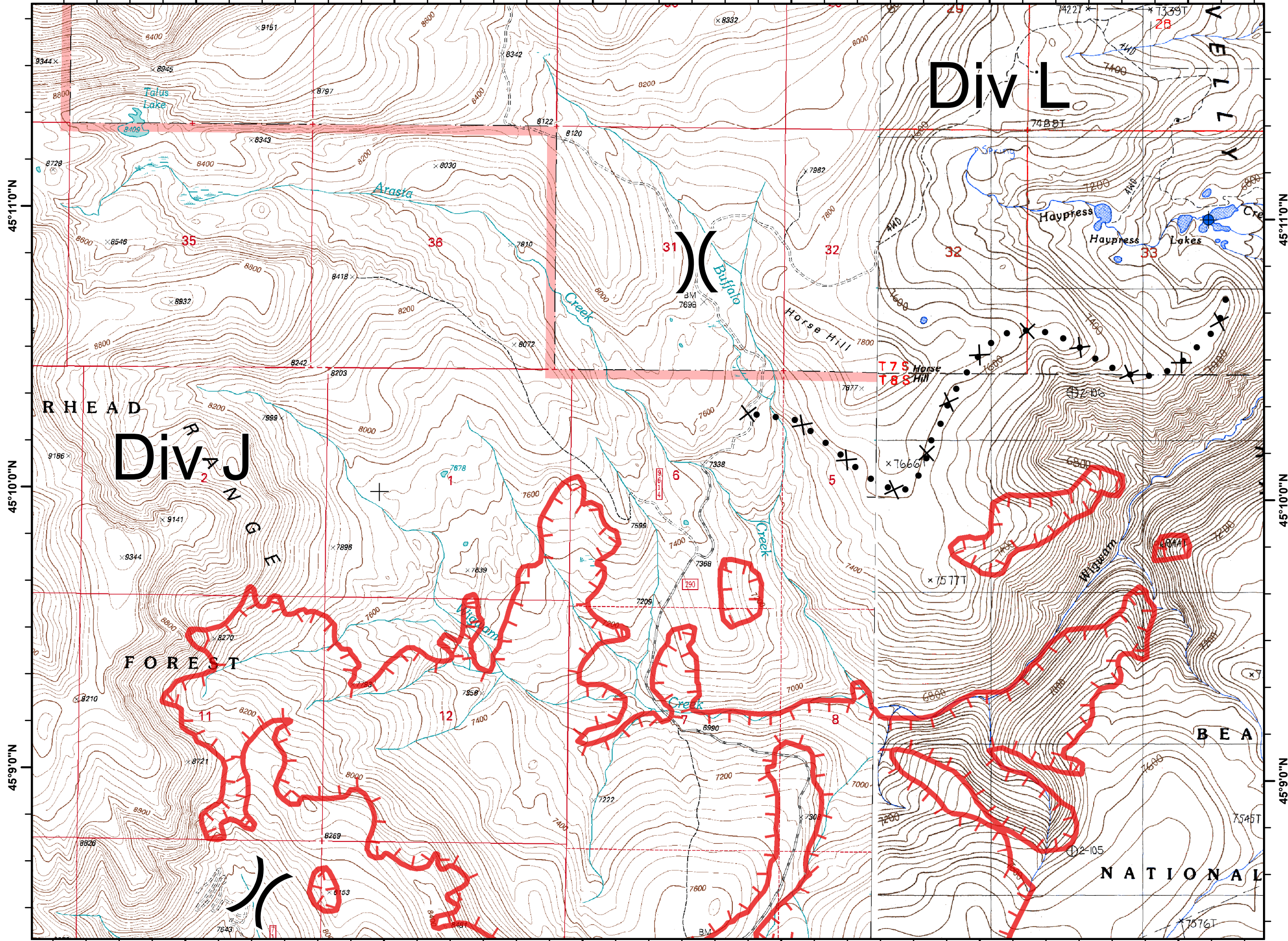
111°53'0"W

111°52'0"W

111°51'0"W

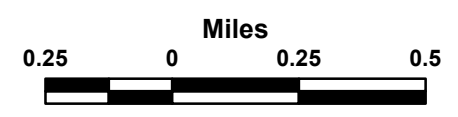
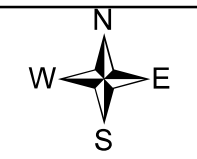
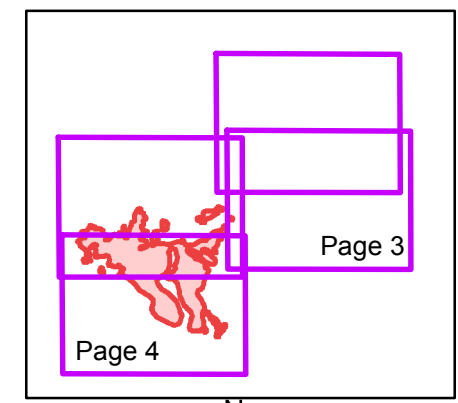
WIGWAM FIRE
 Incident Action Plan Map
 MT-BDF-003305
 Aug 16, 2018

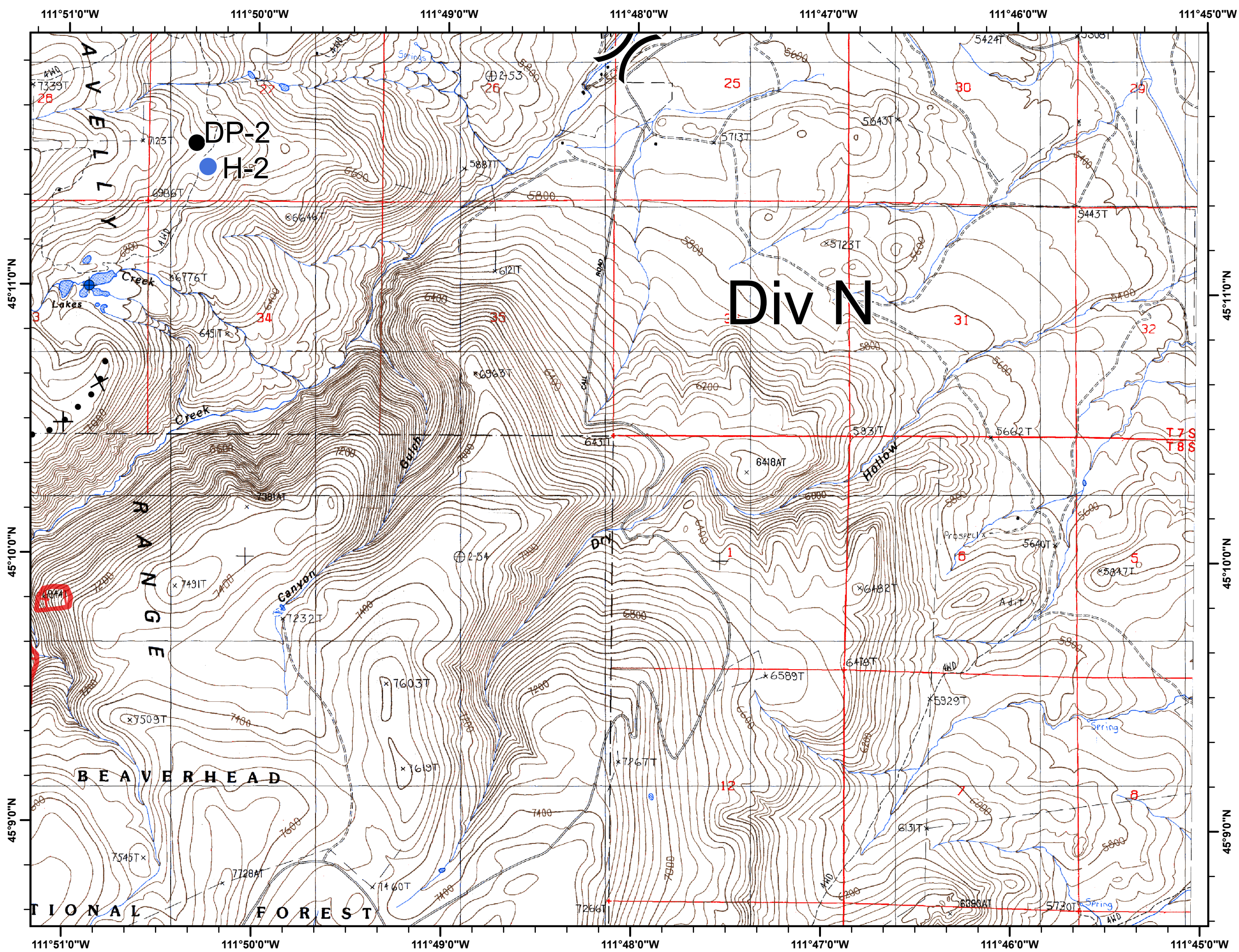
Page 2 of 4



- Legend**
- Drop Point
 - Helispot
 -) Division
 - └ Uncontrolled Fire Edge
 - XXXXX Completed Doser Line

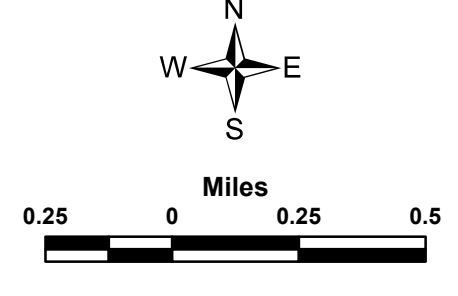
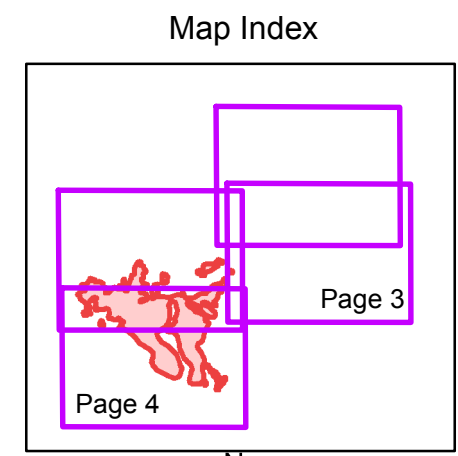
Map Index

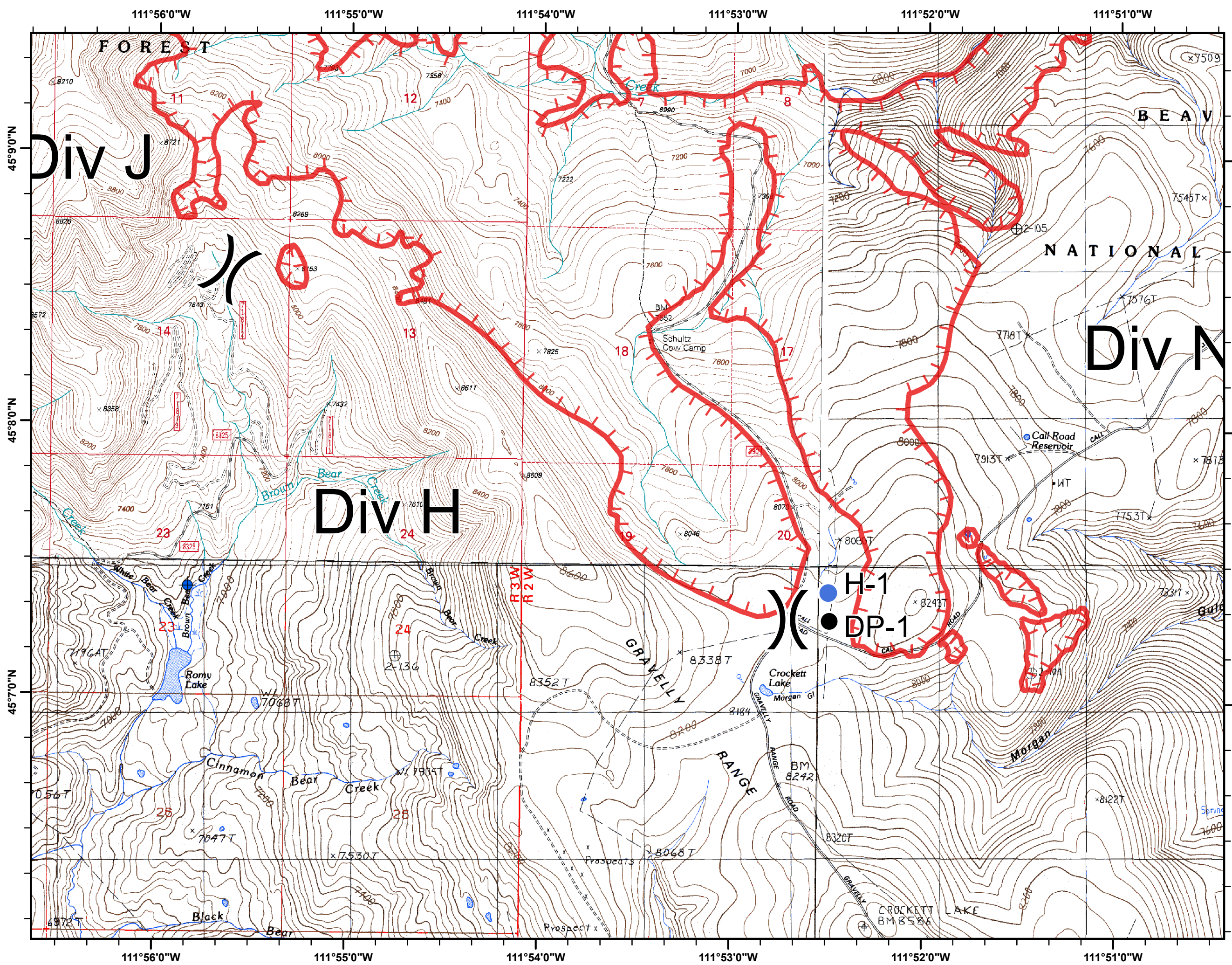




WIGWAM FIRE
 Incident Action Plan Map
 MT-BDF-003305
 Aug 16, 2018

- Legend**
- Drop Point
 - Helispot
 -) Division
 - Uncontrolled Fire Edge
 - XXXXX Completed Doser Line





WIGWAM FIRE
 Incident Action Plan Map
 MT-BDF-003305
 Aug 16, 2018

- Legend
- Drop Point
 - Helispot
 -) Division
 - ┃ Uncontrolled Fire Edge
 - XXXXX Completed Doser Line

Map Index

The Map Index shows a grid of four pages. Page 4 is highlighted in red, indicating the current map's location. Page 3 is to its right, and Page 1 and 2 are to its left.

N
 W E
 S

Miles
 0.2 0 0.2 0.4