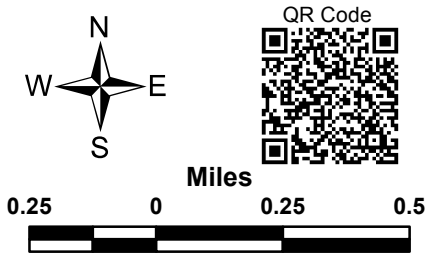
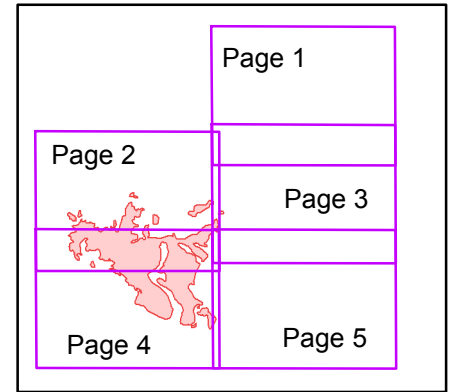
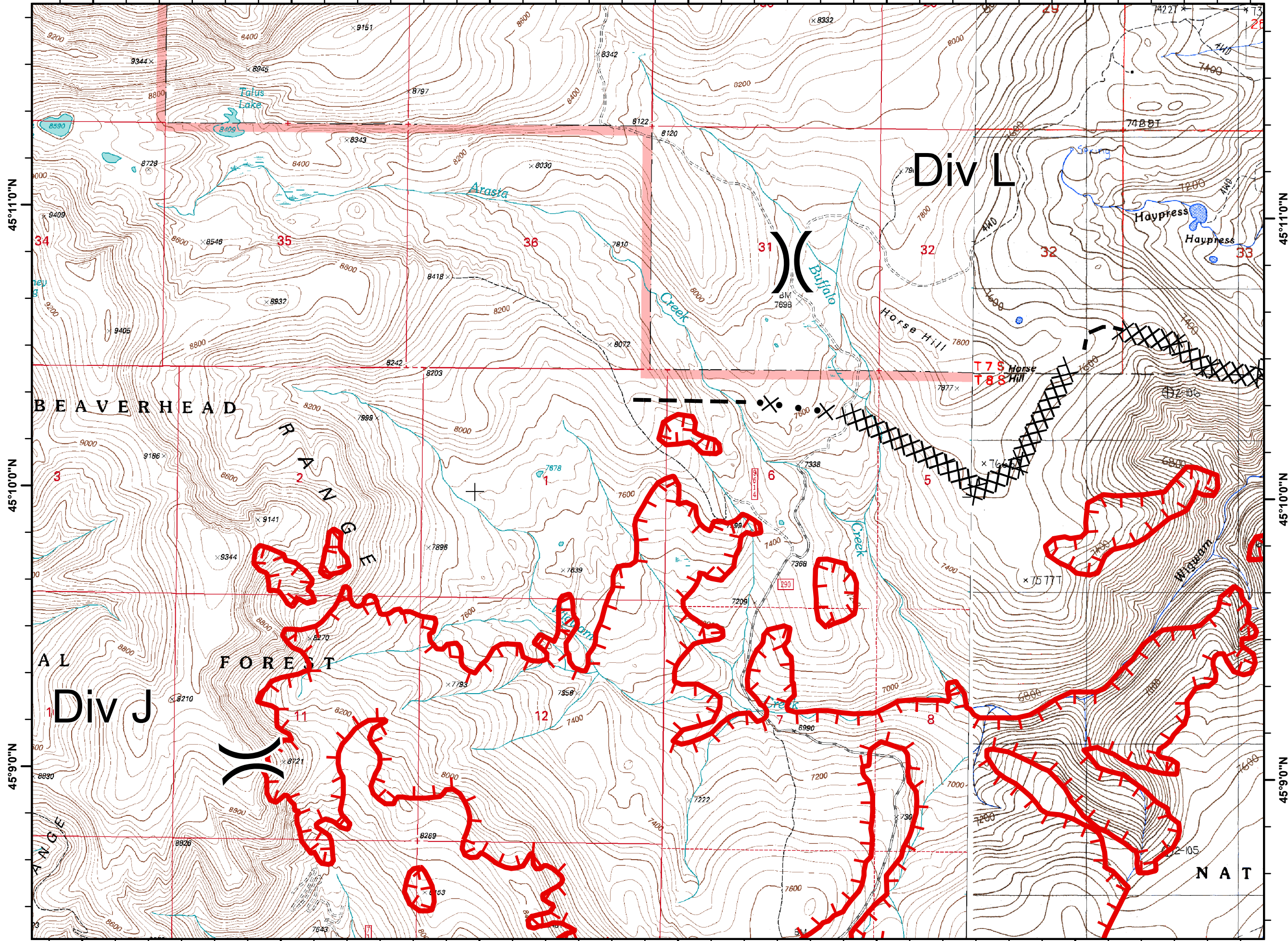


- Legend**
- Drop Point
 - Helispot
 - Division
 - Uncontrolled Fire Edge
 - Proposed Doser Line
 - Completed Doser Line
 - Completed Line

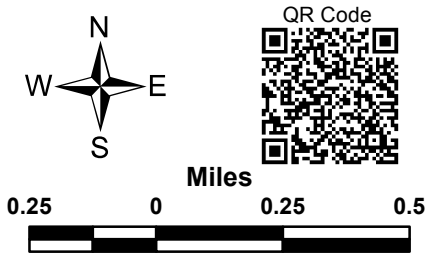
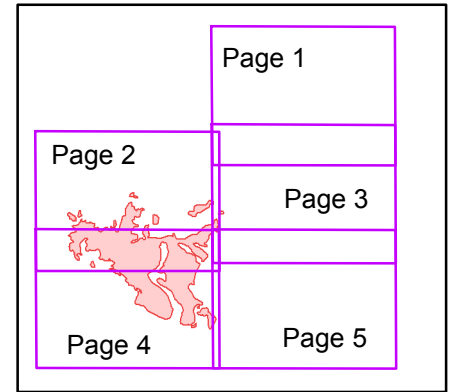
Map Index





- Legend**
- Drop Point
 - Helispot
 -) (Division
 - ┌ Uncontrolled Fire Edge
 - ⊗ Proposed Doser Line
 - ⊗⊗⊗⊗ Completed Doser Line
 - Completed Line

Map Index



111°51'0"W

111°50'0"W

111°49'0"W

111°48'0"W

111°47'0"W

111°46'0"W

WIGWAM FIRE

Incident Action Plan Map

MT-BDF-003305

Aug 17, 2018

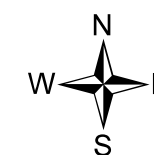
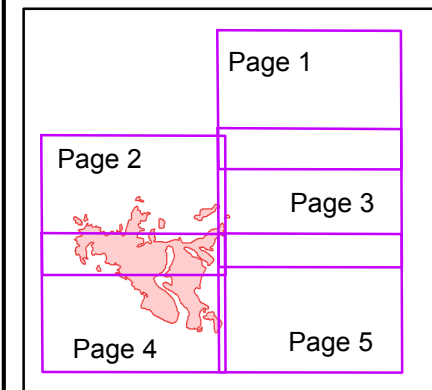
Page 3 of 5



Legend

- Drop Point
- Helispot
- Division
- Uncontrolled Fire Edge
- Proposed Doser Line
- Completed Doser Line
- Completed Line

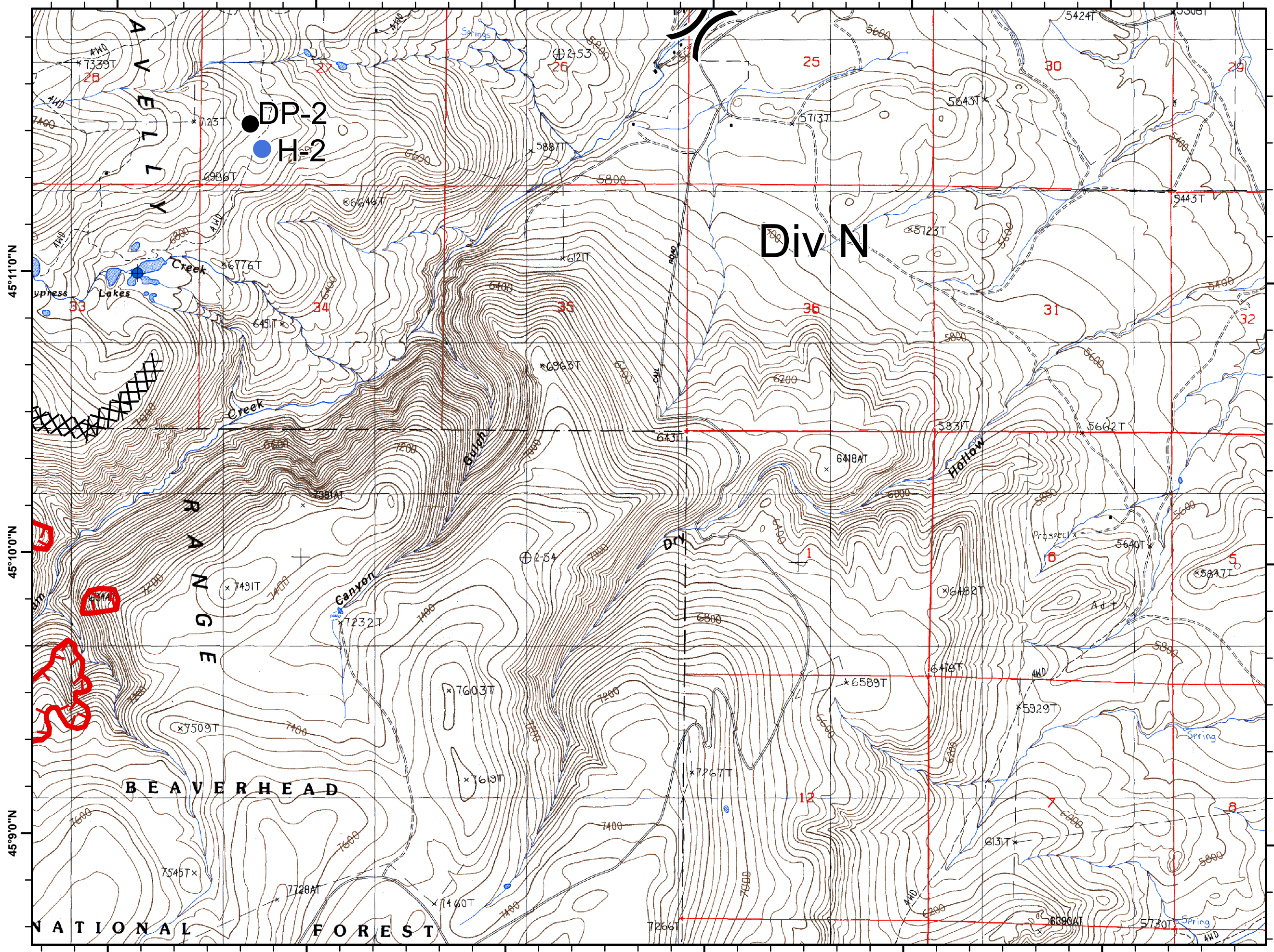
Map Index



QR Code



Miles



45°11'0"N

45°10'0"N

45°9'0"N

45°11'0"N

45°10'0"N

45°9'0"N

111°51'0"W

111°50'0"W

111°49'0"W

111°48'0"W

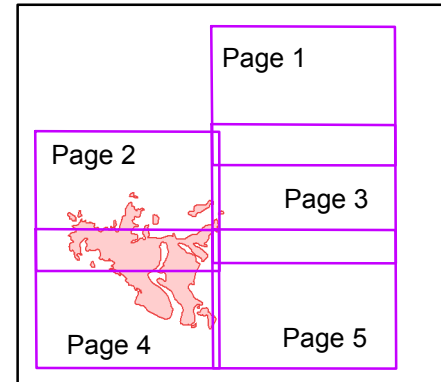
111°47'0"W

111°46'0"W



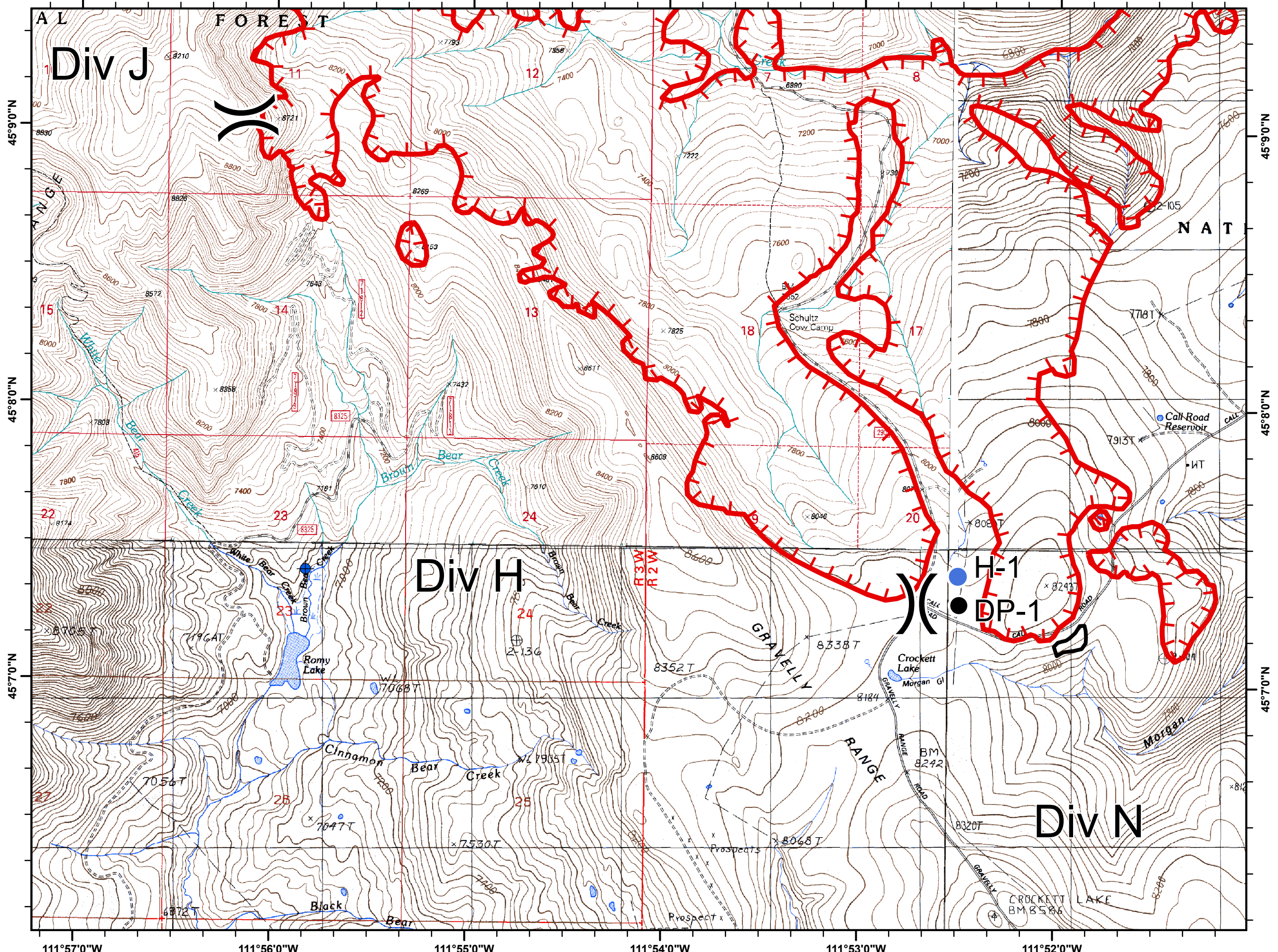
- Legend**
- Drop Point
 - Helispot
 - Division
 - Uncontrolled Fire Edge
 - Proposed Doser Line
 - Completed Doser Line
 - Completed Line

Map Index



QR Code

Miles



45°9'0"N
45°8'0"N
45°7'0"N

45°9'0"N
45°8'0"N
45°7'0"N

WIGWAM FIRE

Incident Action Plan Map

MT-BDF-003305
Aug 17, 2018

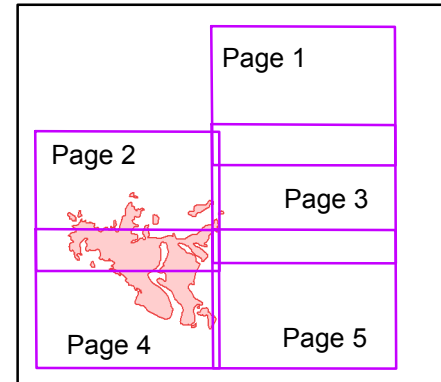
Page 5 of 5



Legend

- Drop Point
- Helispot
-) Division
- └ Uncontrolled Fire Edge
- ⊗ Proposed Doser Line
- ⊗ Completed Doser Line
- Completed Line

Map Index



North arrow pointing North (N), South (S), East (E), and West (W).
Scale bar in Miles: 0.25, 0, 0.25, 0.5.

