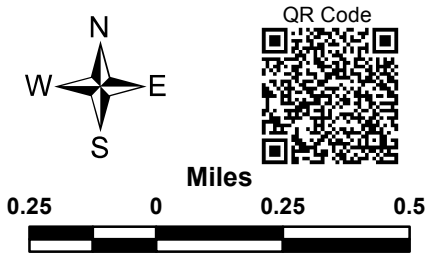
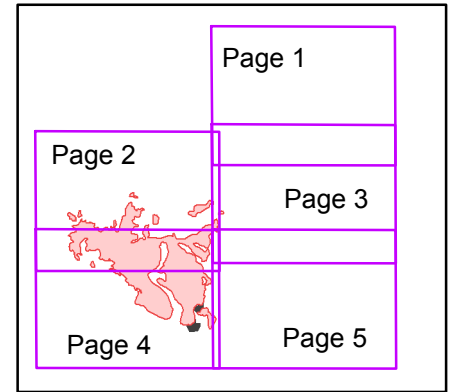


- Legend**
- Drop Point
  - Helispot
  - ♂ Spot Fire
  - ⊕ Dip Site
  - ) Division
  - ┌ Uncontrolled Fire Edge
  - ⊗ Proposed Doser Line
  - XXXXX Completed Doser Line
  - Completed Line
  - H - H - Hand Line

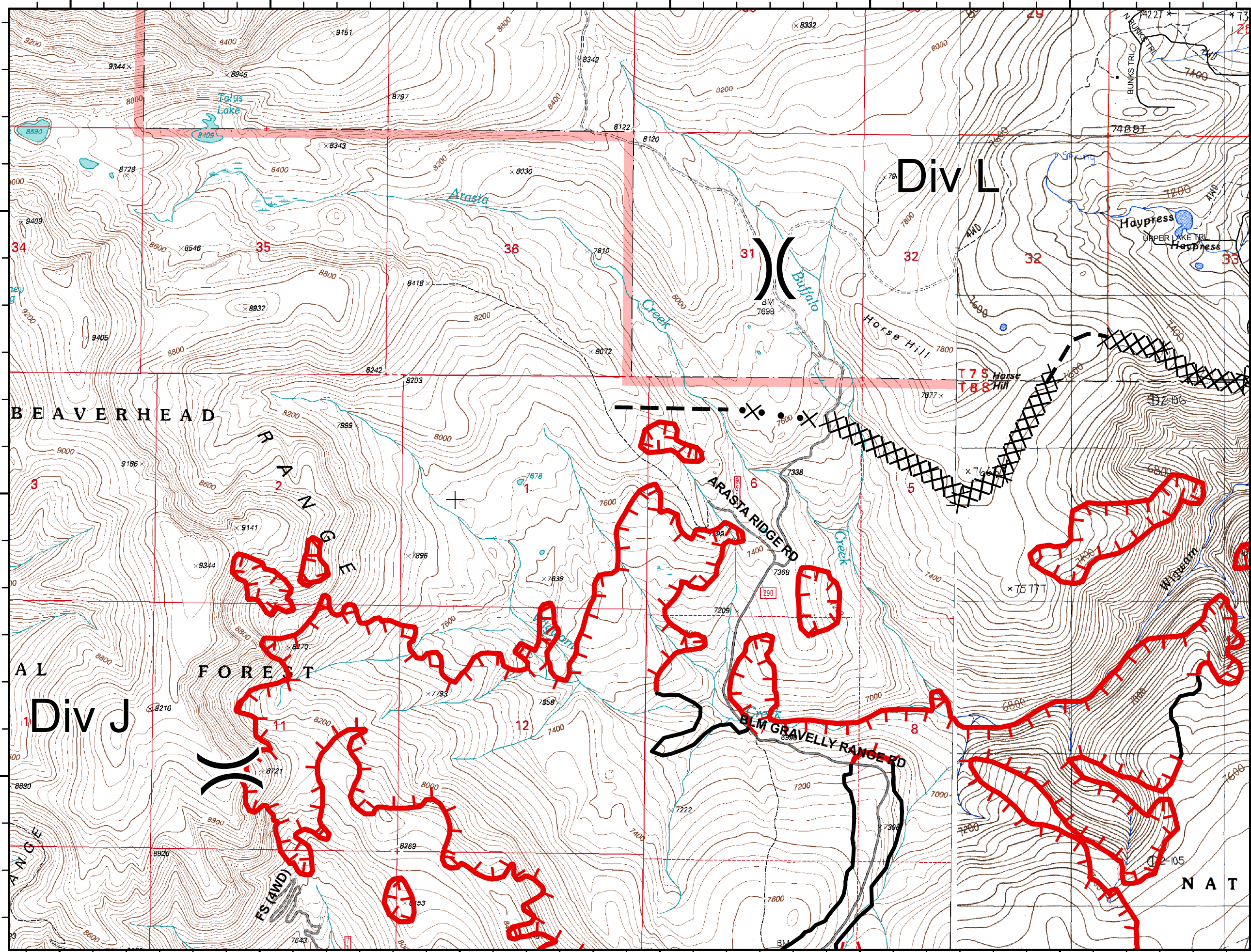
**Map Index**





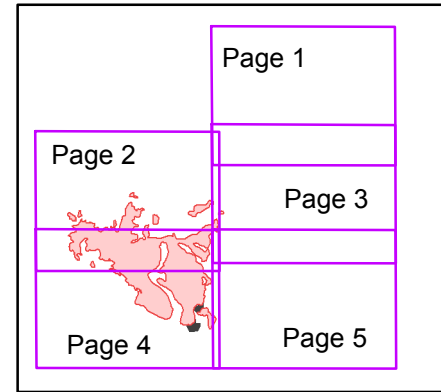
45°11'0"N  
45°10'0"N  
45°9'0"N

45°11'0"N  
45°10'0"N  
45°9'0"N



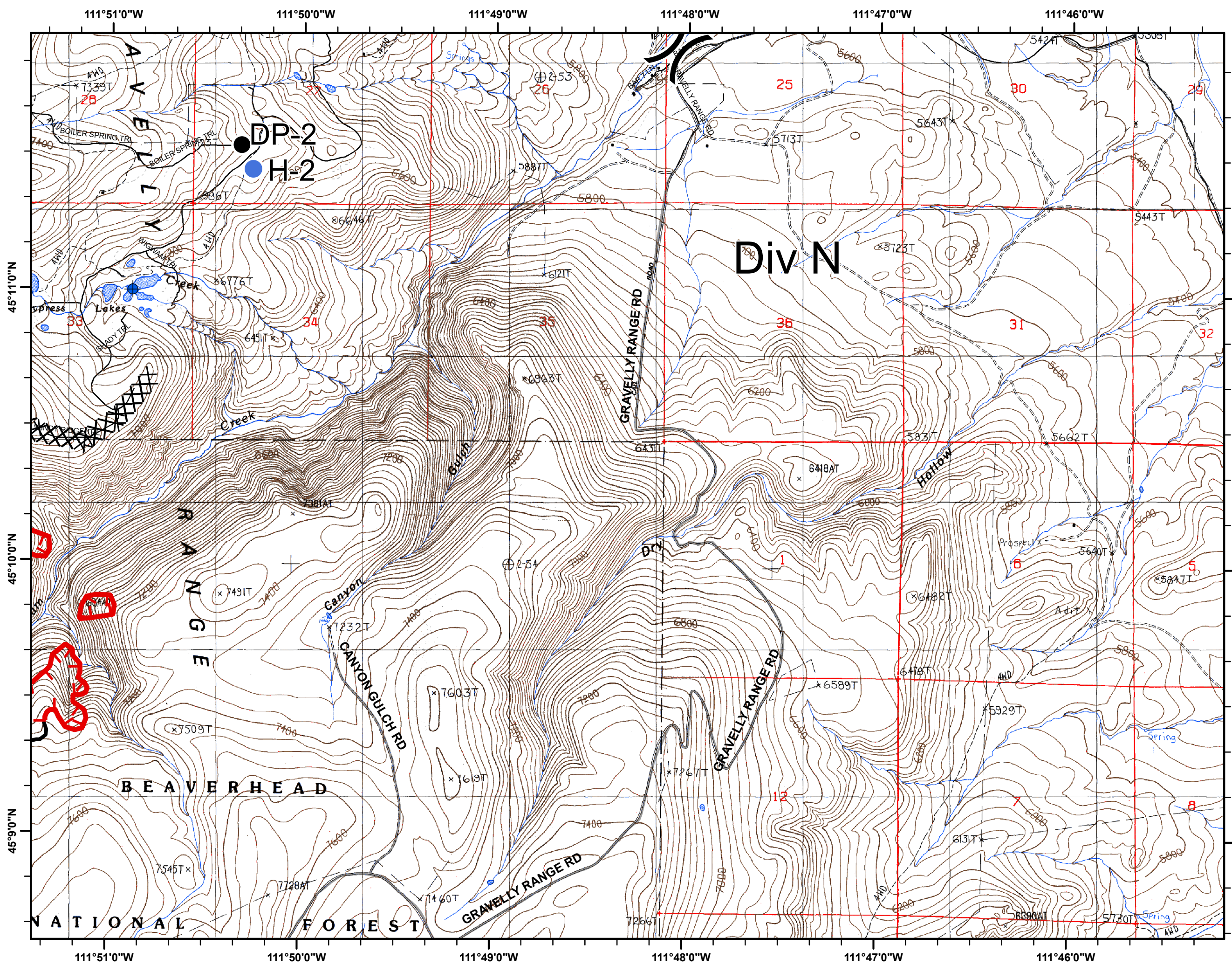
- Legend**
- Drop Point
  - Helispot
  - ♂ Spot Fire
  - ⊕ Dip Site
  - ) ( Division
  - ┌ Uncontrolled Fire Edge
  - ⊗ • Proposed Doser Line
  - ⊗⊗⊗⊗ Completed Doser Line
  - Completed Line
  - H - H - Hand Line

**Map Index**



QR Code

Miles



**Legend**

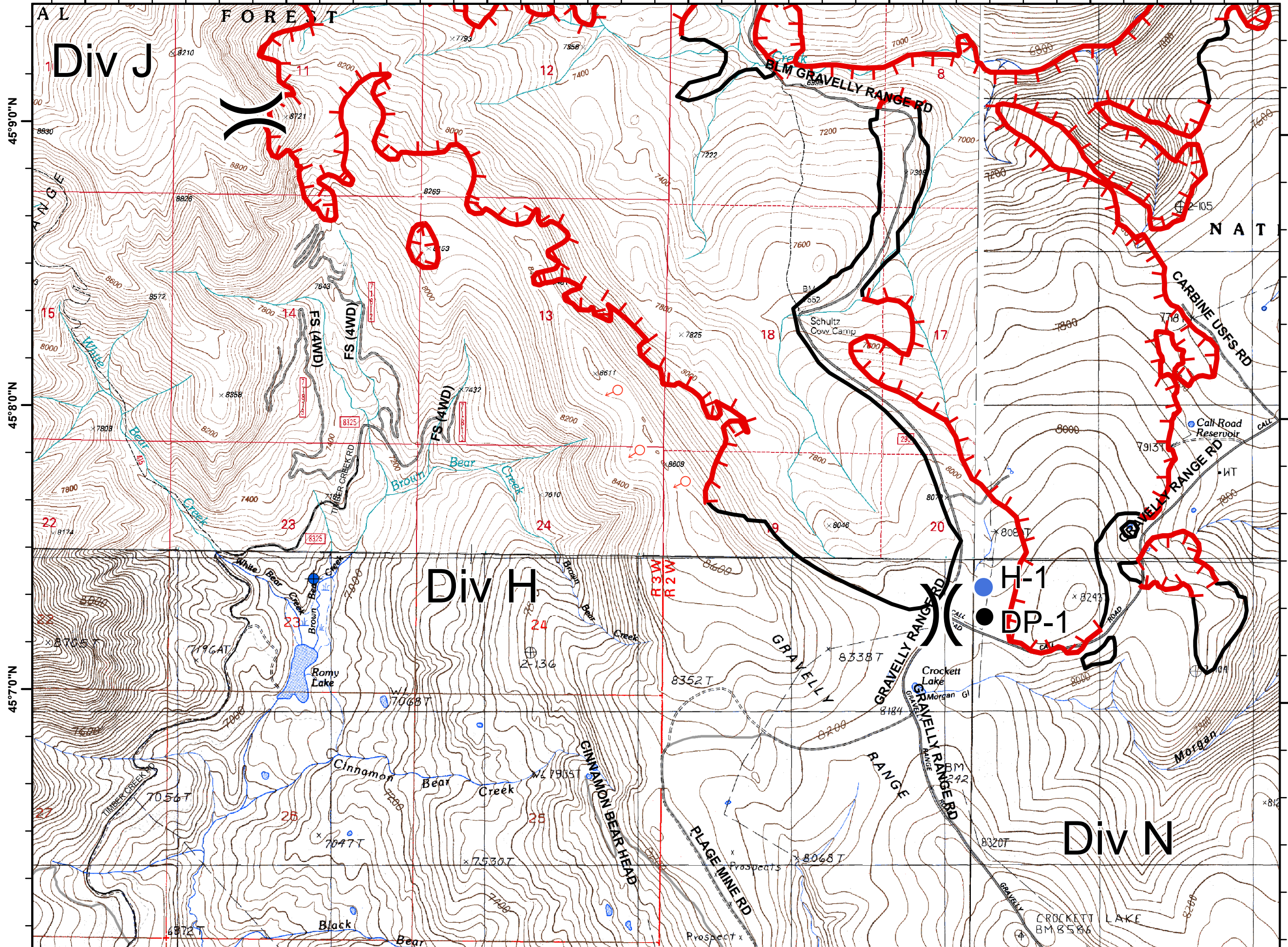
- Drop Point
- Helispot
- Spot Fire
- Dip Site
- Division
- Uncontrolled Fire Edge
- Proposed Doser Line
- Completed Doser Line
- Completed Line
- Hand Line

**Map Index**

	Page 1
Page 2	Page 3
Page 4	Page 5

North arrow pointing up. Scale bar in miles: 0, 0.25, 0.5.

QR Code



# WIGWAM FIRE

## Incident Action Plan Map

MT-BDF-003305  
Aug 18, 2018

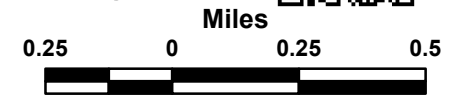
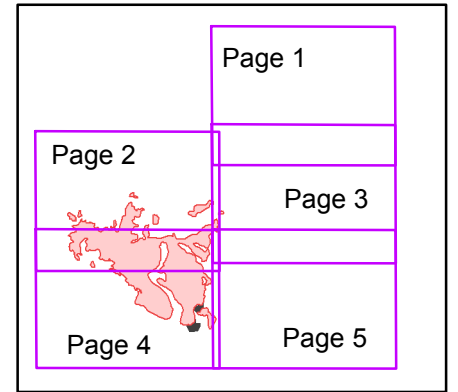
Page 4 of 5

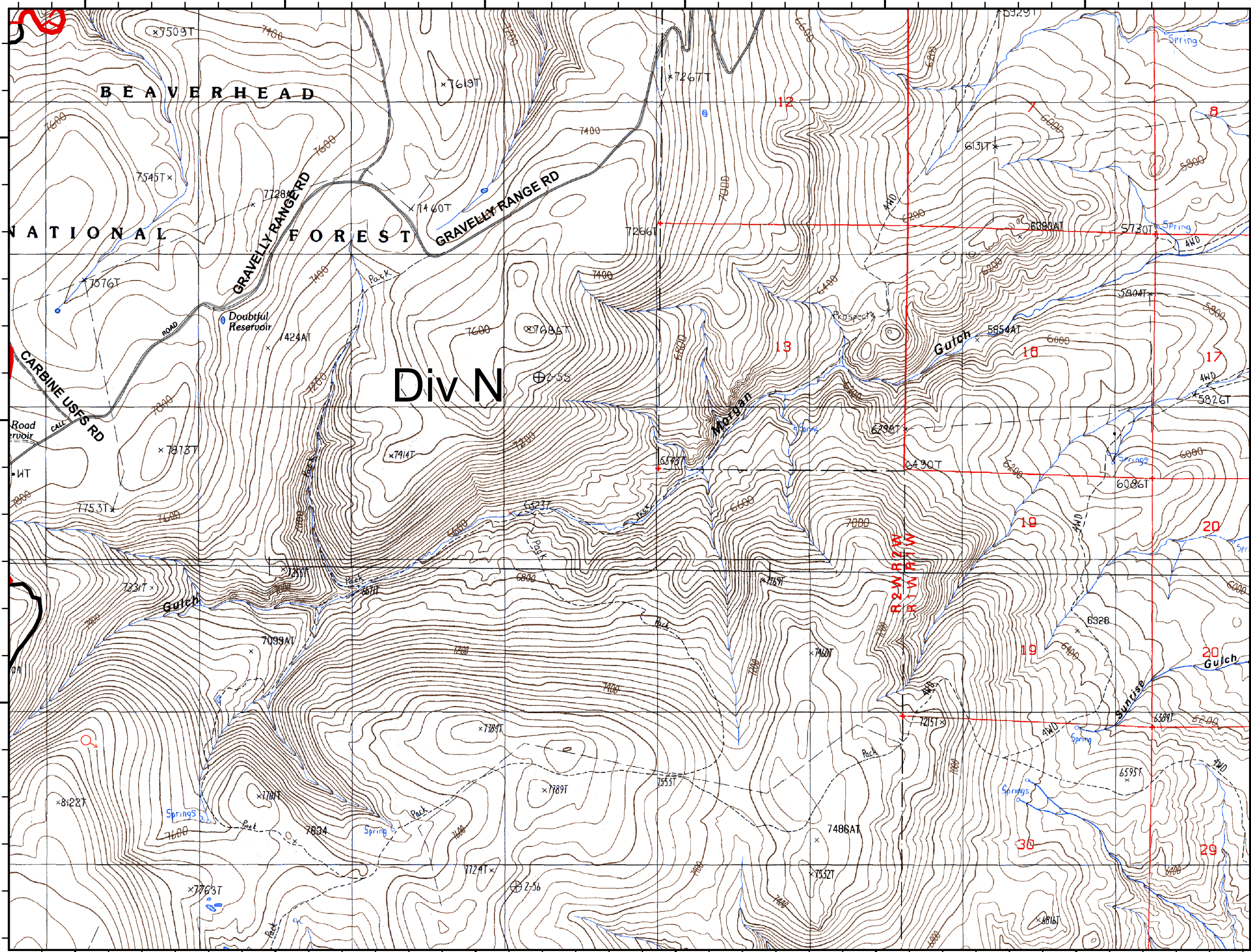


### Legend

- Drop Point
- Helispot
- Spot Fire
- Dip Site
- Division
- Uncontrolled Fire Edge
- Proposed Doser Line
- Completed Doser Line
- Completed Line
- Hand Line

### Map Index





- Legend**
- Drop Point
  - Helispot
  - ♂ Spot Fire
  - ⊕ Dip Site
  - ) Division
  - └─ Uncontrolled Fire Edge
  - ⊗ Proposed Doser Line
  - XXXXX Completed Doser Line
  - Completed Line
  - H - H - Hand Line

**Map Index**

