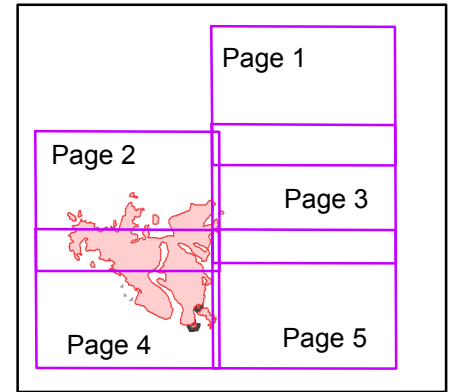


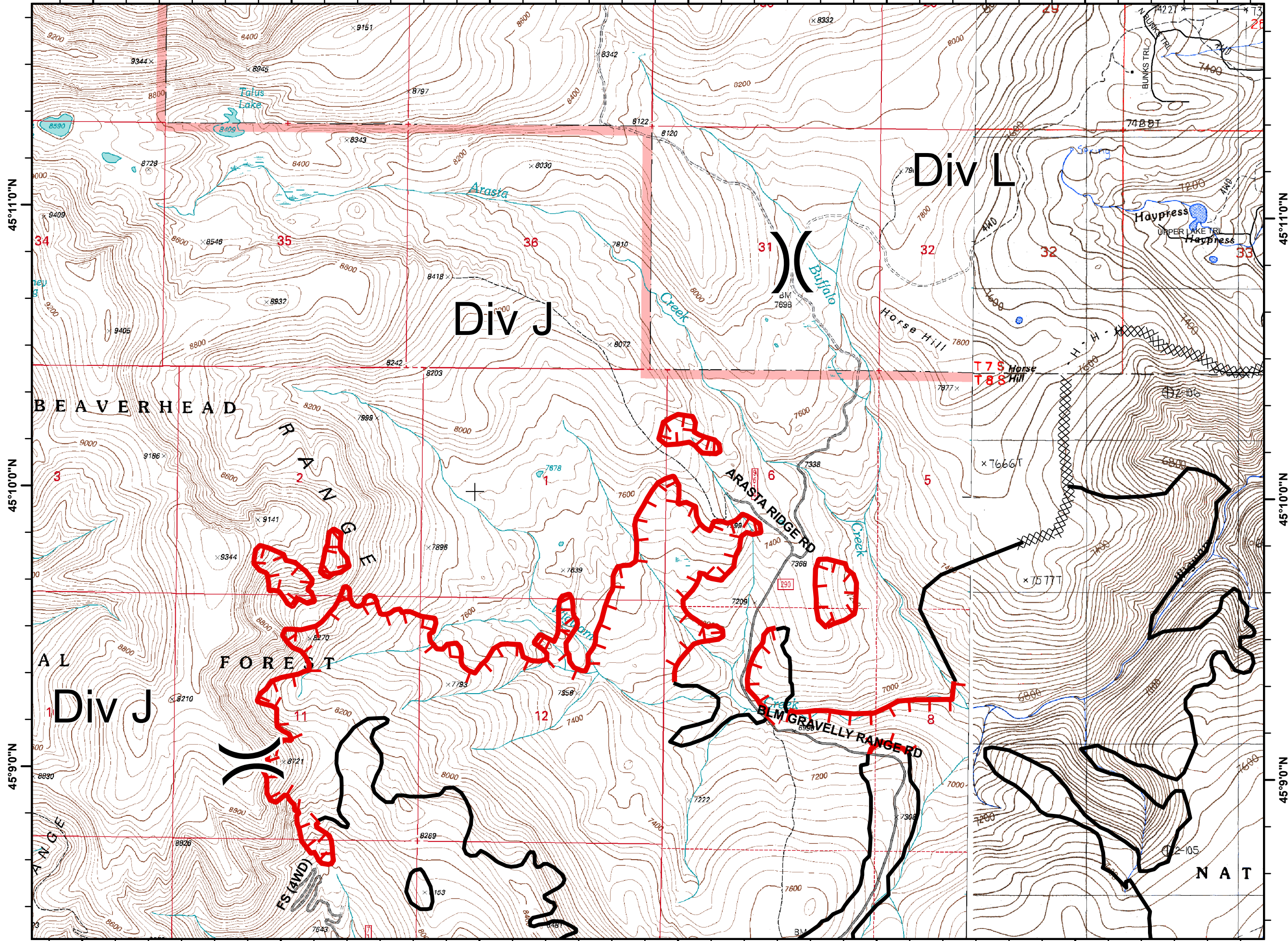
- Legend**
- Drop Point
 - Helispot
 - Spot Fire
 - Dip Site
 - Division
 - Uncontrolled Fire Edge
 - Completed Doser Line
 - Completed Line
 - Hand Line

Map Index



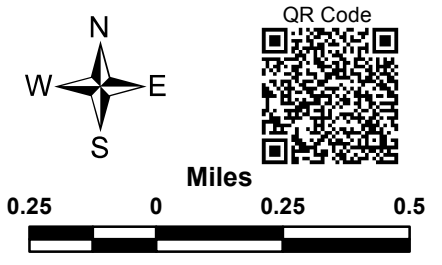
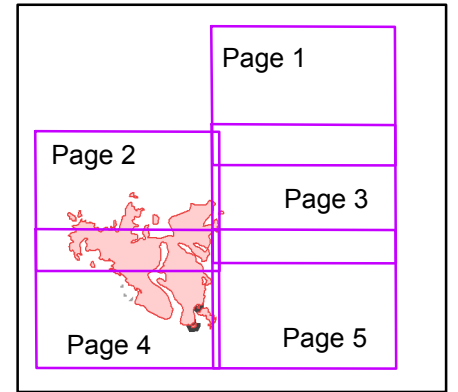
QR Code

Miles



- Legend**
- Drop Point
 - Helispot
 - ♂ Spot Fire
 - ⊕ Dip Site
 -) (Division
 - ┌ Uncontrolled Fire Edge
 - XXXXXXXXX Completed Doser Line
 - Completed Line
 - H · H · Hand Line

Map Index



111°51'0"W

111°50'0"W

111°49'0"W

111°48'0"W

111°47'0"W

111°46'0"W

WIGWAM FIRE

Incident Action Plan Map

MT-BDF-003305

Aug 20, 2018

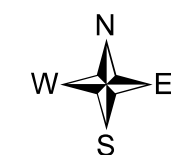
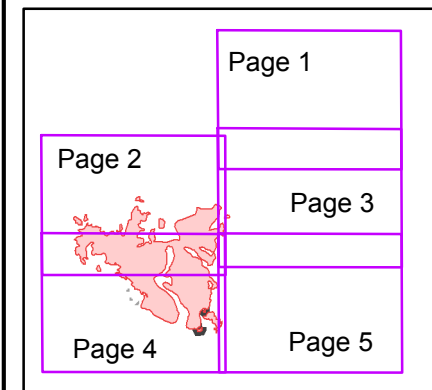
Page 3 of 5



Legend

- Drop Point
- Helispot
- Spot Fire
- Dip Site
- Division
- Uncontrolled Fire Edge
- Completed Doser Line
- Completed Line
- Hand Line

Map Index

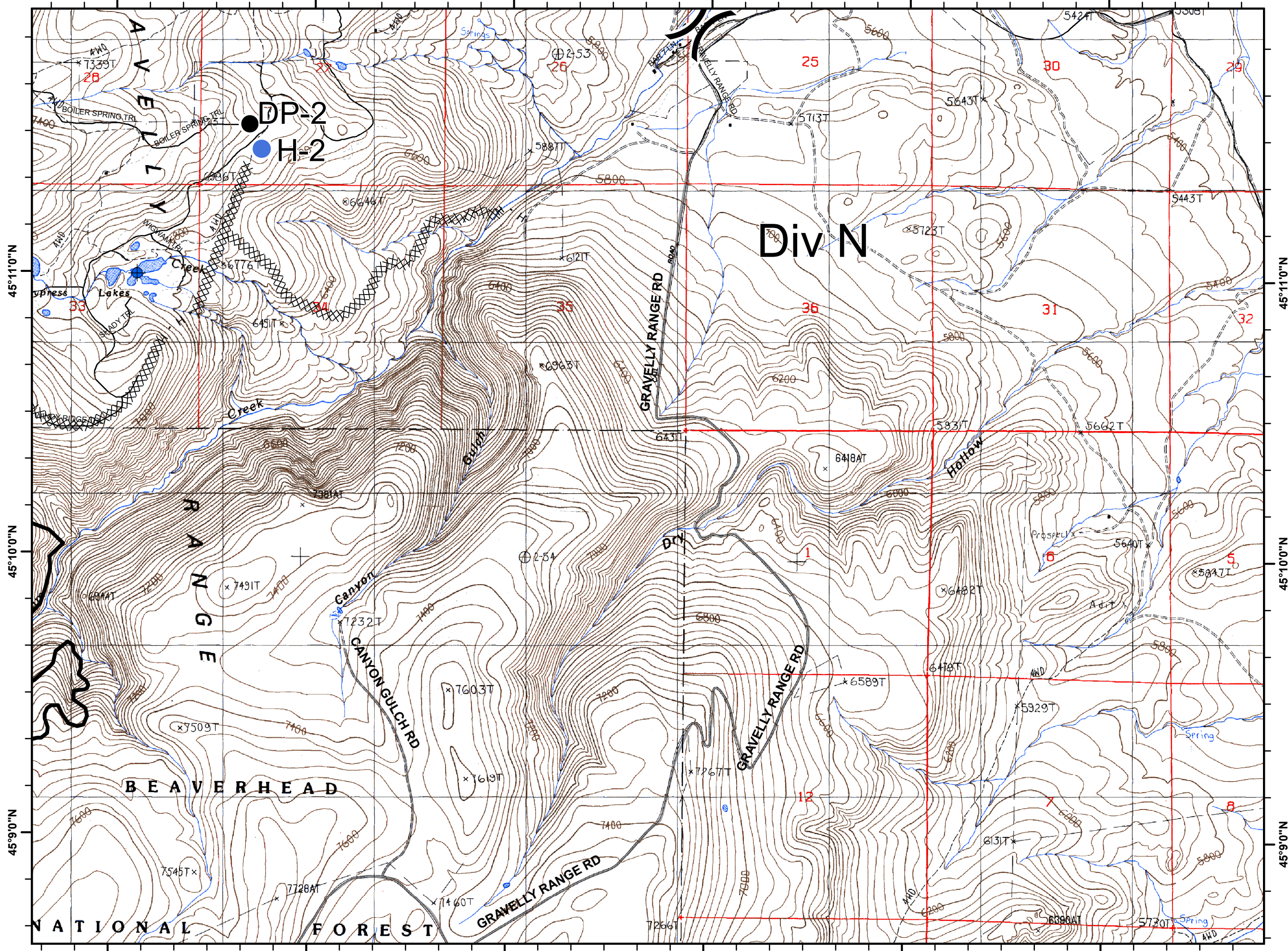


QR Code



Miles

0.25 0 0.25 0.5



Div N

BEAVERHEAD

NATIONAL FOREST

RANGE

AVENUE

DP-2

H-2

Creek

Canyon Gulch Rd

Gravelly Range Rd

Gravelly Range Rd

Gravelly Range Rd

Hollow

Spring

Spring

25

26

27

28

29

30

31

32

33

34

35

36

12

8

45°11'0"N

45°10'0"N

45°9'0"N

45°11'0"N

45°10'0"N

45°9'0"N

111°51'0"W

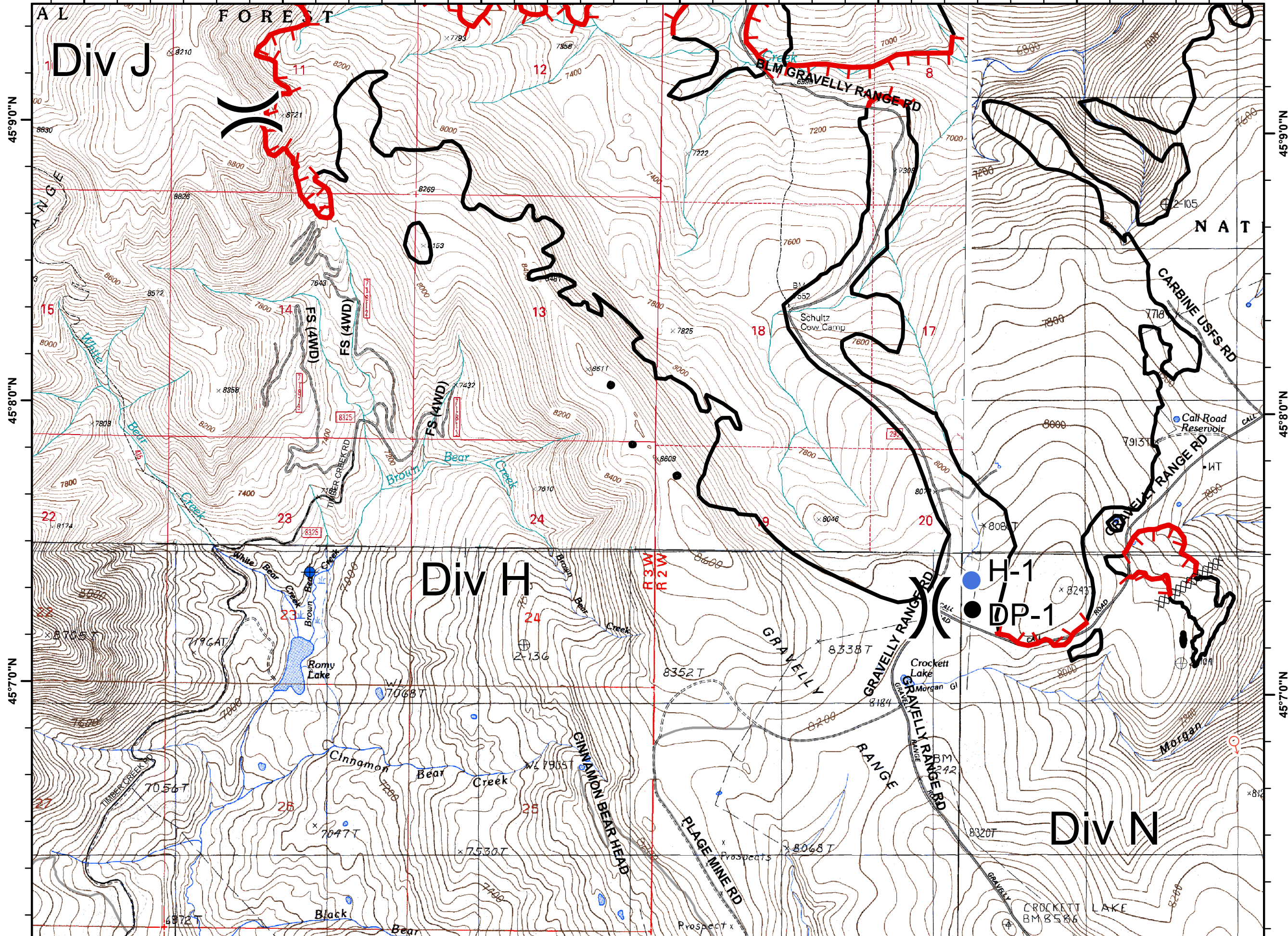
111°50'0"W

111°49'0"W

111°48'0"W

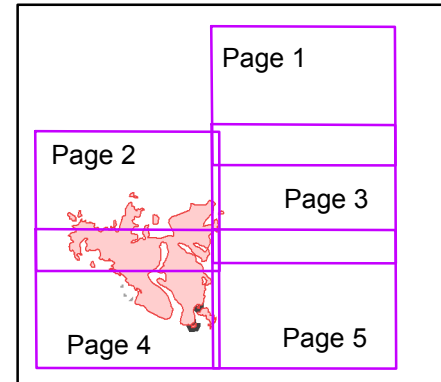
111°47'0"W

111°46'0"W



- Legend**
- Drop Point
 - Helispot
 - Spot Fire
 - Dip Site
 - Division
 - Uncontrolled Fire Edge
 - Completed Doser Line
 - Completed Line
 - Hand Line

Map Index



QR Code

Miles

WIGWAM FIRE

Incident Action Plan Map

MT-BDF-003305
Aug 20, 2018
Page 5 of 5



Legend

- Drop Point
- Helispot
- ♂ Spot Fire
- ⊕ Dip Site
-) Division
- ┌ Uncontrolled Fire Edge
- XXXXX Completed Doser Line
- Completed Line
- H - H - Hand Line

Map Index

