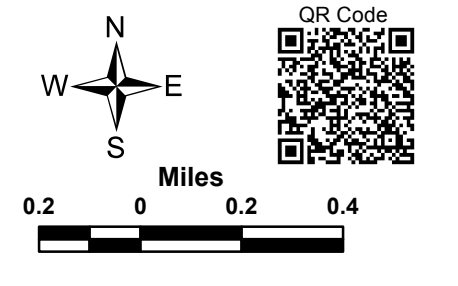
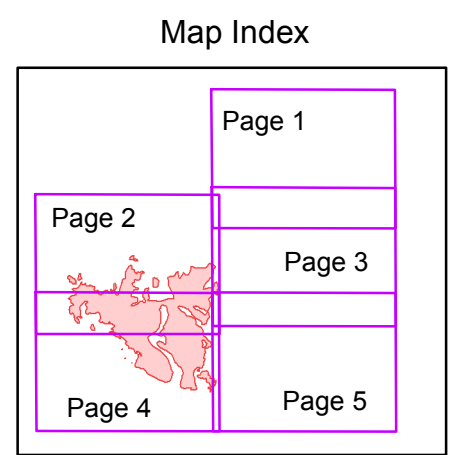


- Legend**
- Drop Point
 - Helispot
 - 🔥 Spot Fire
 - ⊕ Dip Site
 -) Division
 - XXXXXX Completed Doser Line
 - Completed Line
 - R · R · Road as Completed Line
 - H · H · Hand Line



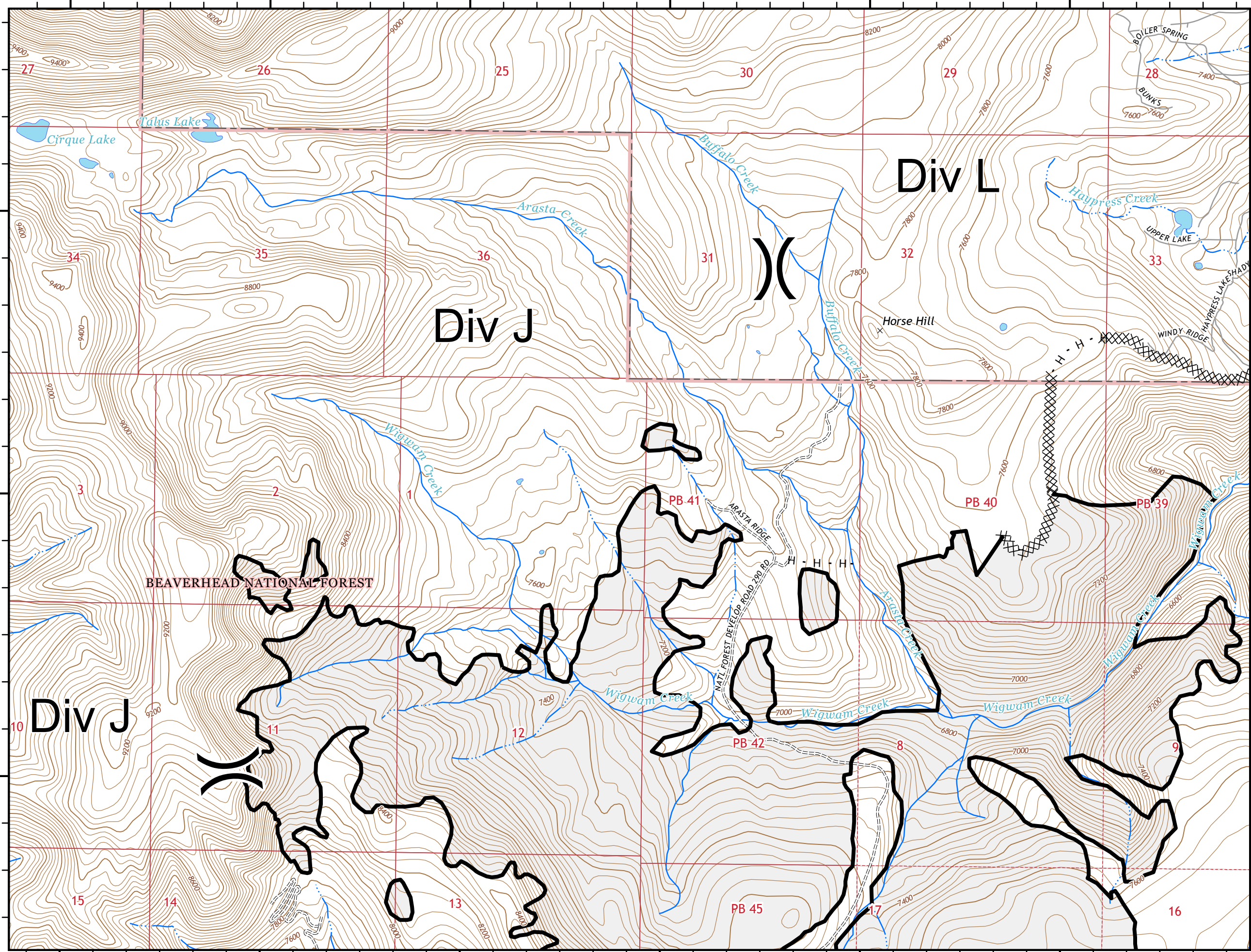
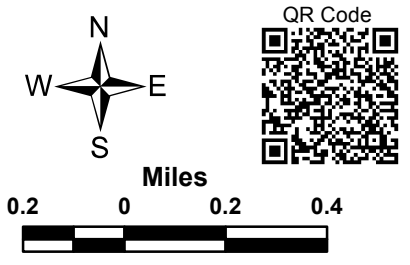
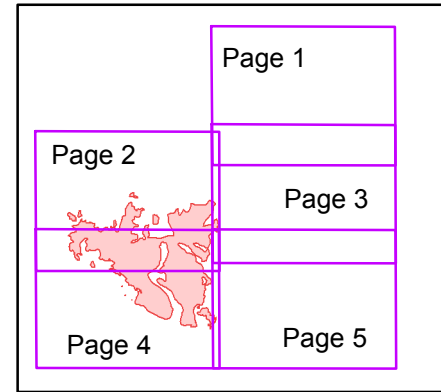


Legend

- Drop Point
- Helispot
- ♂ Spot Fire
- ⊕ Dip Site
-) (Division

- XXXXXX Completed Doser Line
- Completed Line
- R · R · Road as Completed Line
- H · H · Hand Line

Map Index



111°51'0"W

111°50'0"W

111°49'0"W

111°48'0"W

111°47'0"W

111°46'0"W

WIGWAM FIRE

Incident Action Plan Map

MT-BDF-003305

Aug 24, 2018

Page 3 of 5

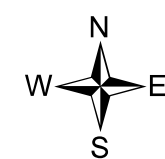
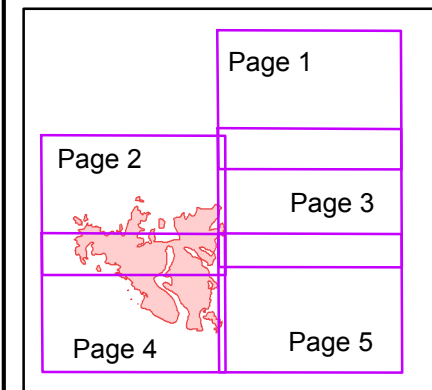


Legend

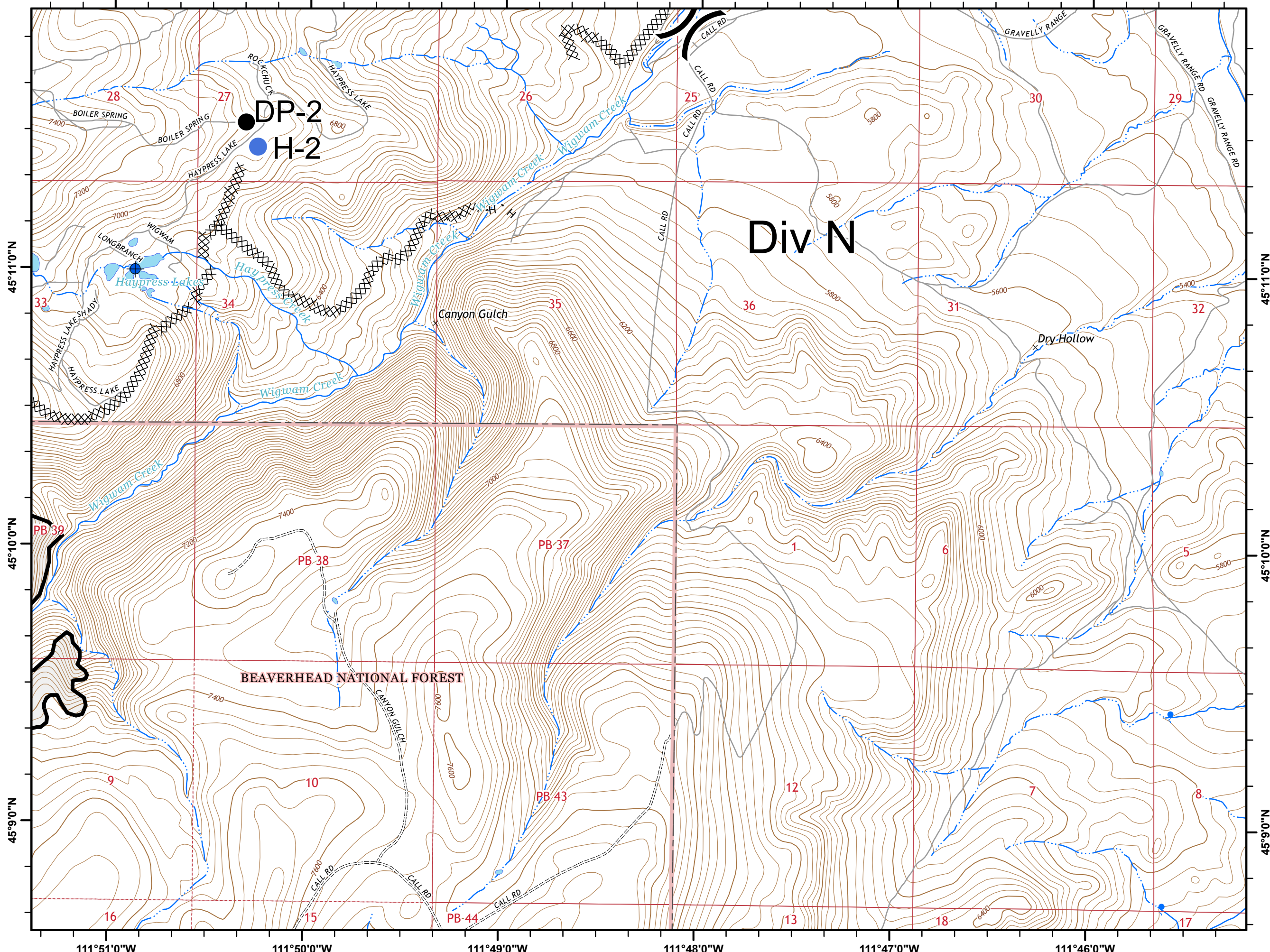
- Drop Point
- Helispot
- Spot Fire
- Dip Site
- Division

- Completed Doser Line
- Completed Line
- R - R - Road as Completed Line
- H - H - Hand Line

Map Index



QR Code



Div N

BEAVERHEAD NATIONAL FOREST

45°11'0"N

45°11'0"N

45°10'0"N

45°10'0"N

45°9'0"N

45°9'0"N

111°51'0"W

111°50'0"W

111°49'0"W

111°48'0"W

111°47'0"W

111°46'0"W

111°57'0"W 111°56'0"W 111°55'0"W 111°54'0"W 111°53'0"W 111°52'0"W

45°9'0"N

45°9'0"N

45°8'0"N

45°8'0"N

45°7'0"N

45°7'0"N

Div J

Div H

Div N

BEAVERHEAD NATIONAL FOREST

WIGWAM FIRE

Incident Action Plan Map

MT-BDF-003305

Aug 24, 2018

Page 4 of 5

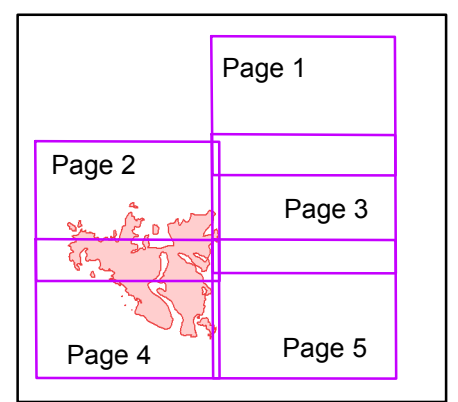


Legend

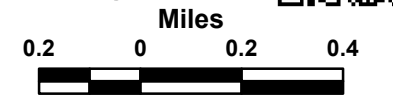
- Drop Point
- Helispot
- Spot Fire
- Dip Site
- Division

- Completed Doser Line
- Completed Line
- R - R - Road as Completed Line
- H - H - Hand Line

Map Index



QR Code



111°57'0"W 111°56'0"W 111°55'0"W 111°54'0"W 111°53'0"W 111°52'0"W

WIGWAM FIRE

Incident Action Plan Map

MT-BDF-003305
Aug 24, 2018

Page 5 of 5



Legend

- Drop Point
- Helispot
- ♂ Spot Fire
- ⊕ Dip Site
-) Division

- XXXXXX Completed Doser Line
- Completed Line
- R - R - Road as Completed Line
- H - H - Hand Line

Map Index

