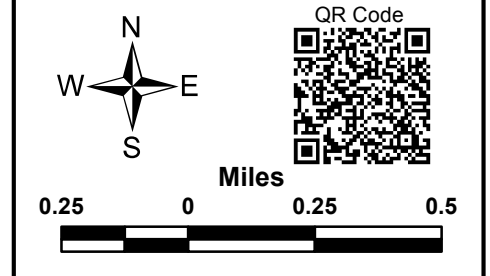
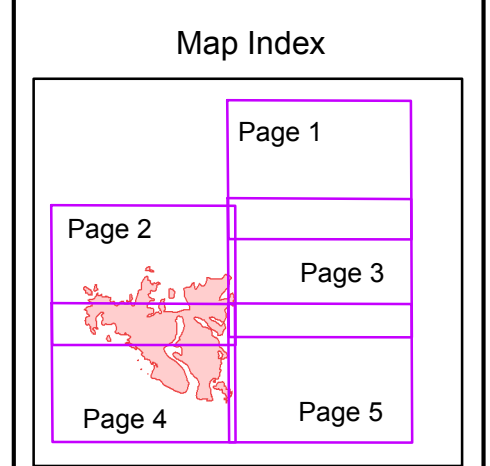
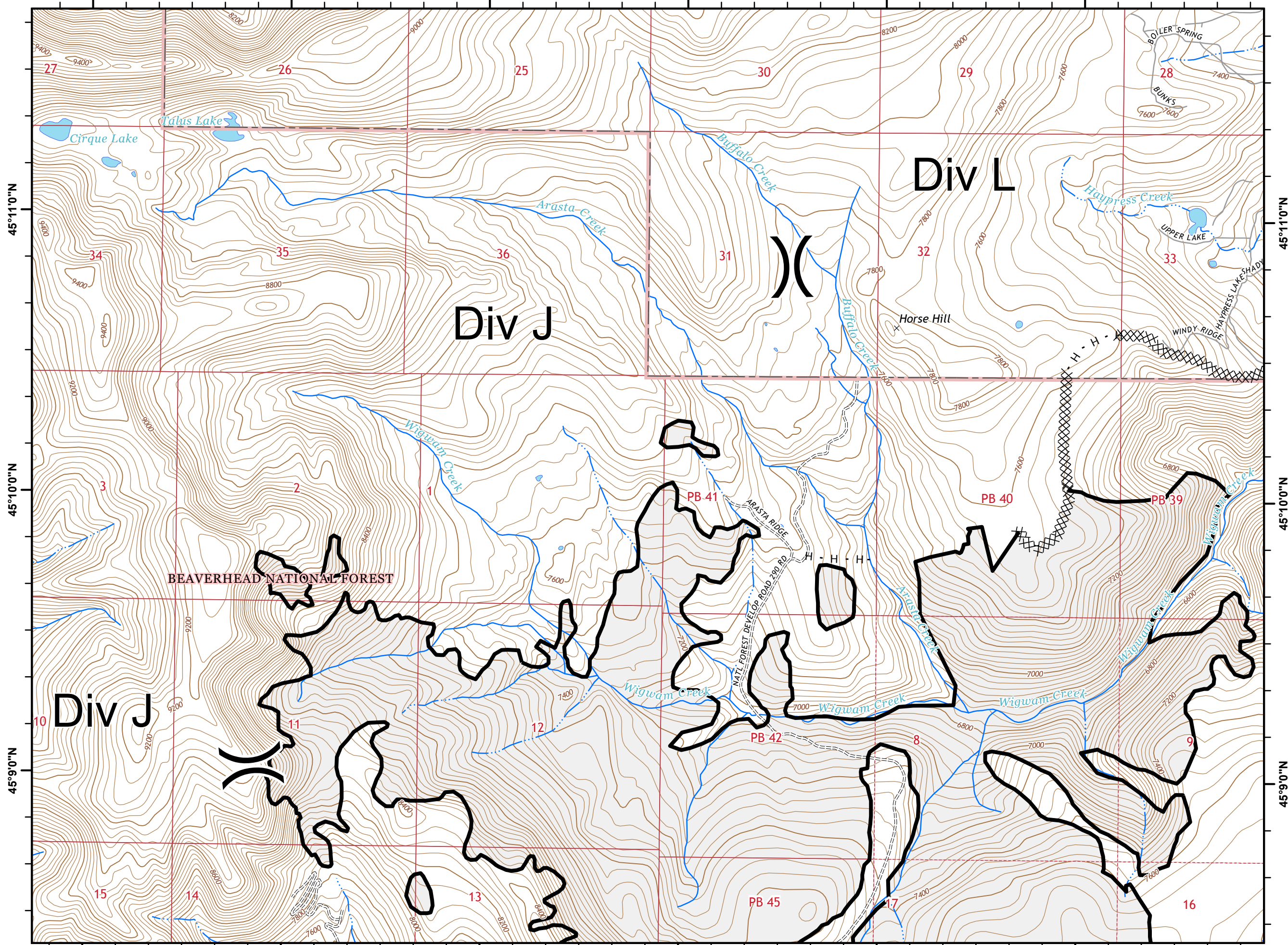


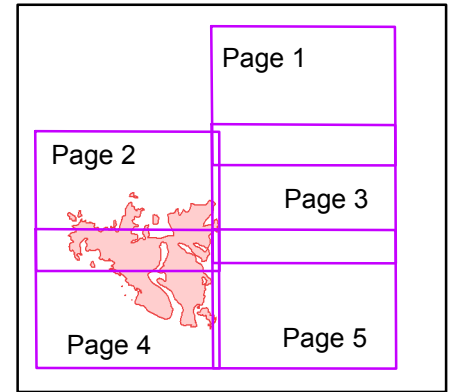
- Legend**
- Drop Point
 - Helispot
 - ⊕ Dip Site
 -) Division
 - XXXXXX Completed Doser Line
 - Completed Line
 - R · R · Road as Completed Line
 - H · H · Hand Line





- Legend**
- Drop Point
 - Helispot
 - ⊕ Dip Site
 -) (Division
 - XXXXXX Completed Doser Line
 - Completed Line
 - R · R · Road as Completed Line
 - H · H · Hand Line

Map Index



North arrow with N, S, E, W directions.

QR Code

Miles scale: 0.25, 0, 0.25, 0.5

111°51'0"W

111°50'0"W

111°49'0"W

111°48'0"W

111°47'0"W

111°46'0"W

WIGWAM FIRE

Incident Action Plan Map

MT-BDF-003305

Aug 26, 2018

Page 3 of 5



Div N

● DP-2
● H-2

45°11'0"N

45°11'0"N

45°10'0"N

45°10'0"N

45°9'0"N

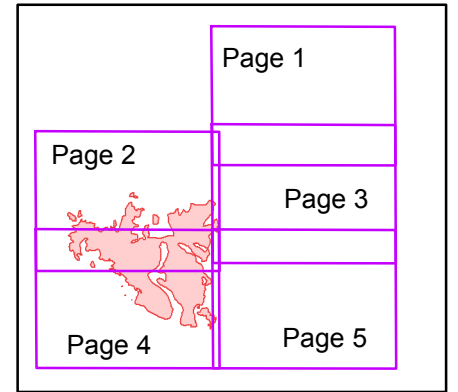
45°9'0"N

Legend

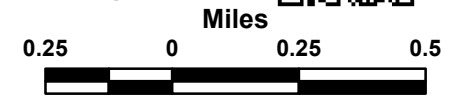
- Drop Point
- Helispot
- ⊕ Dip Site
-) Division

- XXXXXX Completed Doser Line
- Completed Line
- R - R - Road as Completed Line
- H - H - Hand Line

Map Index



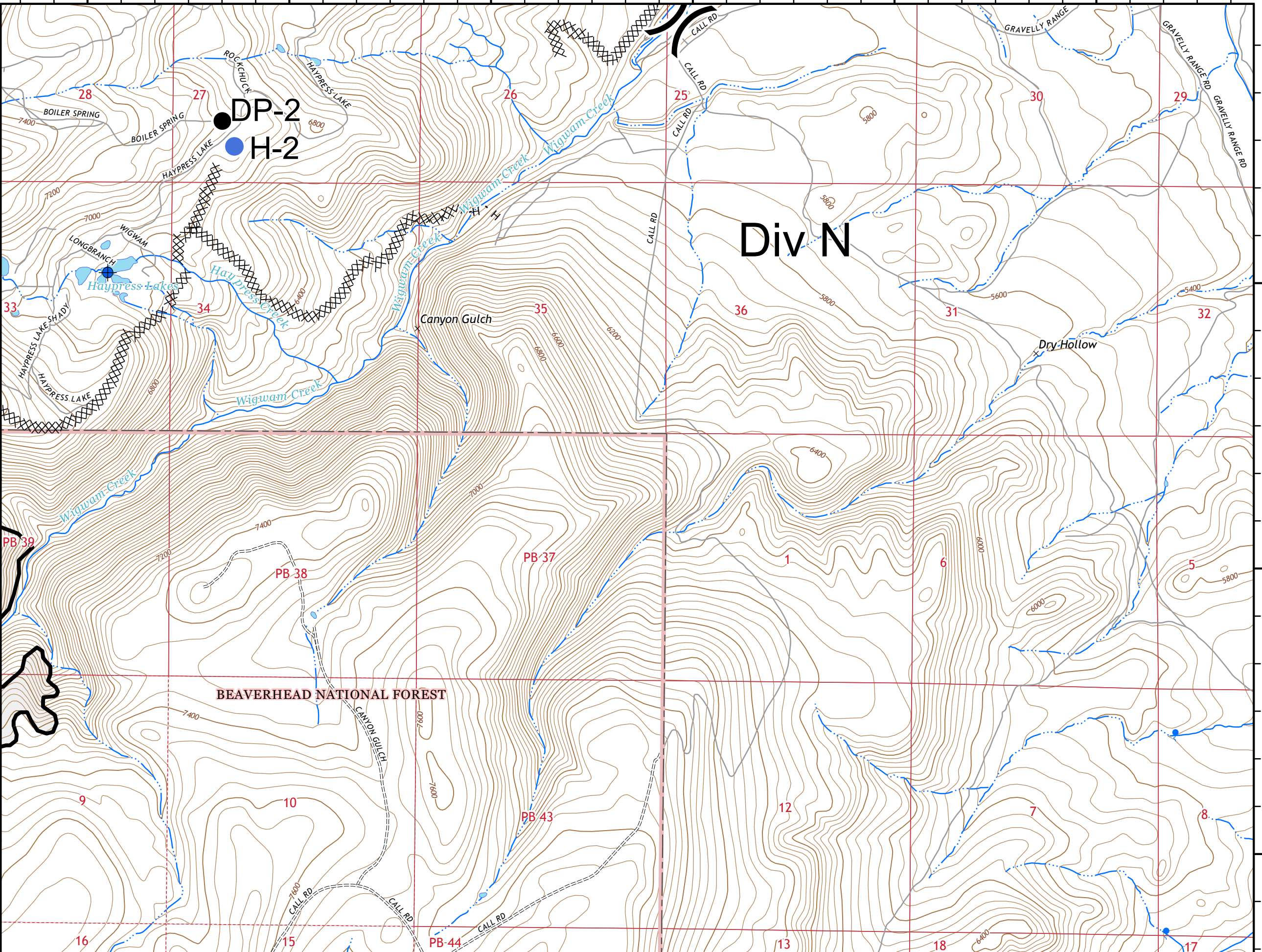
QR Code



BEAVERHEAD NATIONAL FOREST

Canyon Gulch

Dry Hollow



111°57'0"W 111°56'0"W 111°55'0"W 111°54'0"W 111°53'0"W 111°52'0"W

45°9'0"N

45°9'0"N

45°8'0"N

45°8'0"N

45°7'0"N

45°7'0"N

Div J

Div H

Div N

BEAVERHEAD NATIONAL FOREST

Gravelly Range

Gravelly Range

PB 50

PB 42

PB 45

PB 46

12

8

9

17

16

24

20

21

22

23

14

15

25

29

28

27

26

34

35

36

45°9'0"N

45°8'0"N

45°7'0"N

111°57'0"W 111°56'0"W 111°55'0"W 111°54'0"W 111°53'0"W 111°52'0"W

WIGWAM FIRE

Incident Action Plan Map

MT-BDF-003305

Aug 26, 2018

Page 4 of 5

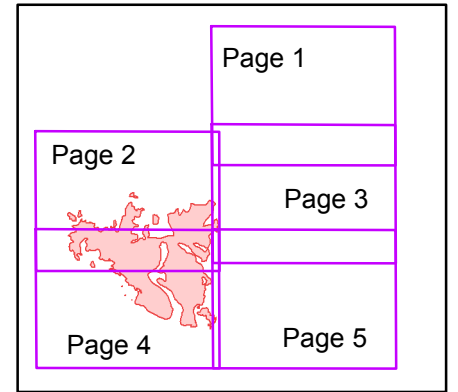


Legend

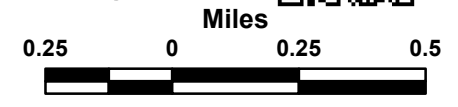
- Drop Point
- Helispot
- Dip Site
- Division

- Completed Doser Line
- Completed Line
- R - R - Road as Completed Line
- H - H - Hand Line

Map Index



QR Code



WIGWAM FIRE

Incident Action Plan Map

MT-BDF-003305

Aug 26, 2018

Page 5 of 5



Legend

- Drop Point
- Helispot
- ⊕ Dip Site
-) Division

- XXXXXX Completed Doser Line
- Completed Line
- R - R - Road as Completed Line
- H - H - Hand Line

Map Index

