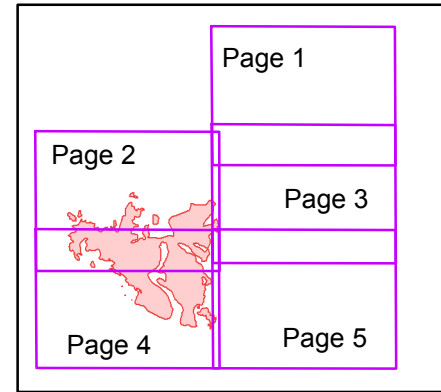




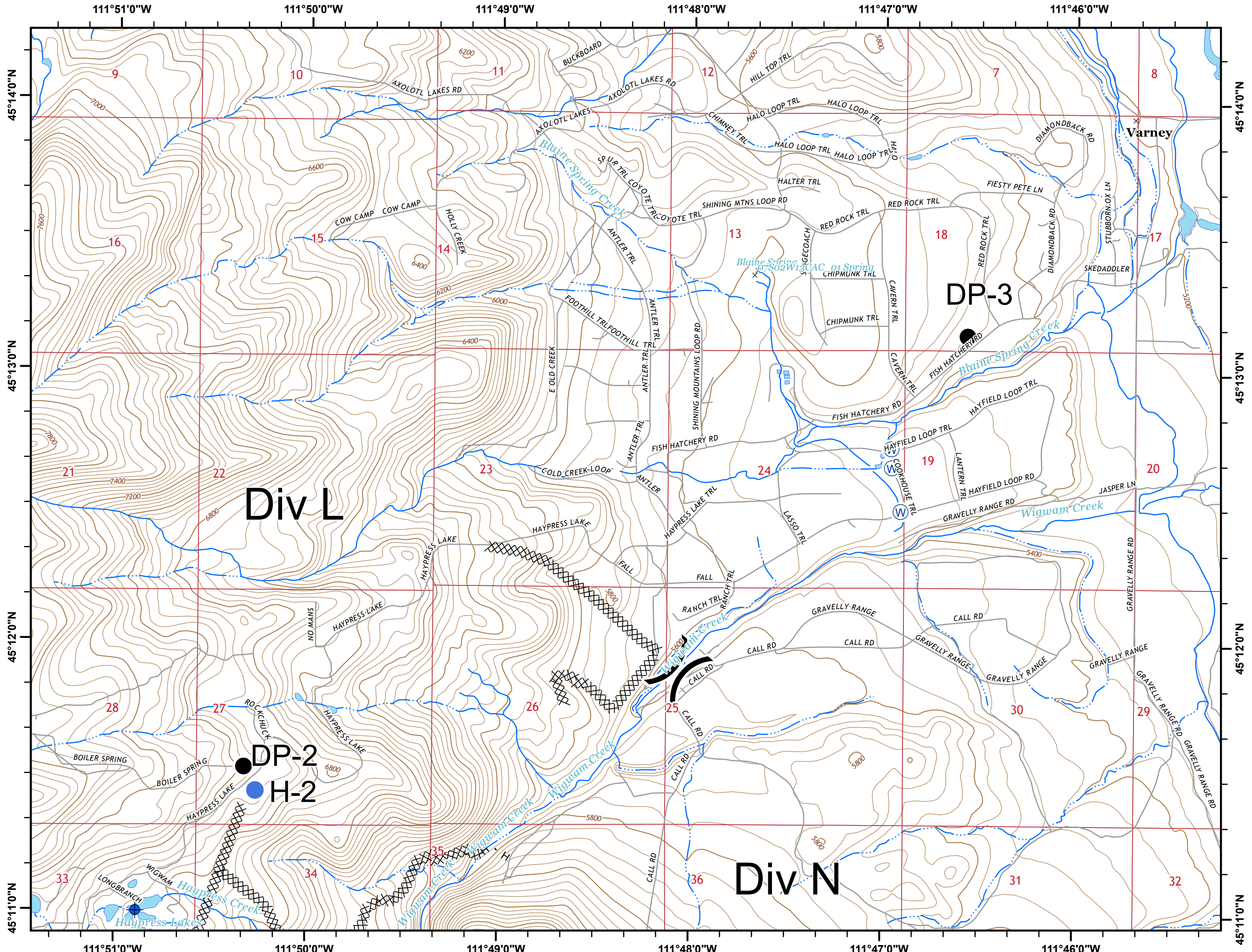
- Legend**
- Drop Point
  - Helispot
  - ♂ Spot Fire
  - ⊕ Dip Site
  - ) Division
  - Uncontrolled Fire Edge
  - Completed Doser Line
  - Completed Line
  - R - R - Road as Completed Line
  - H - H - Hand Line

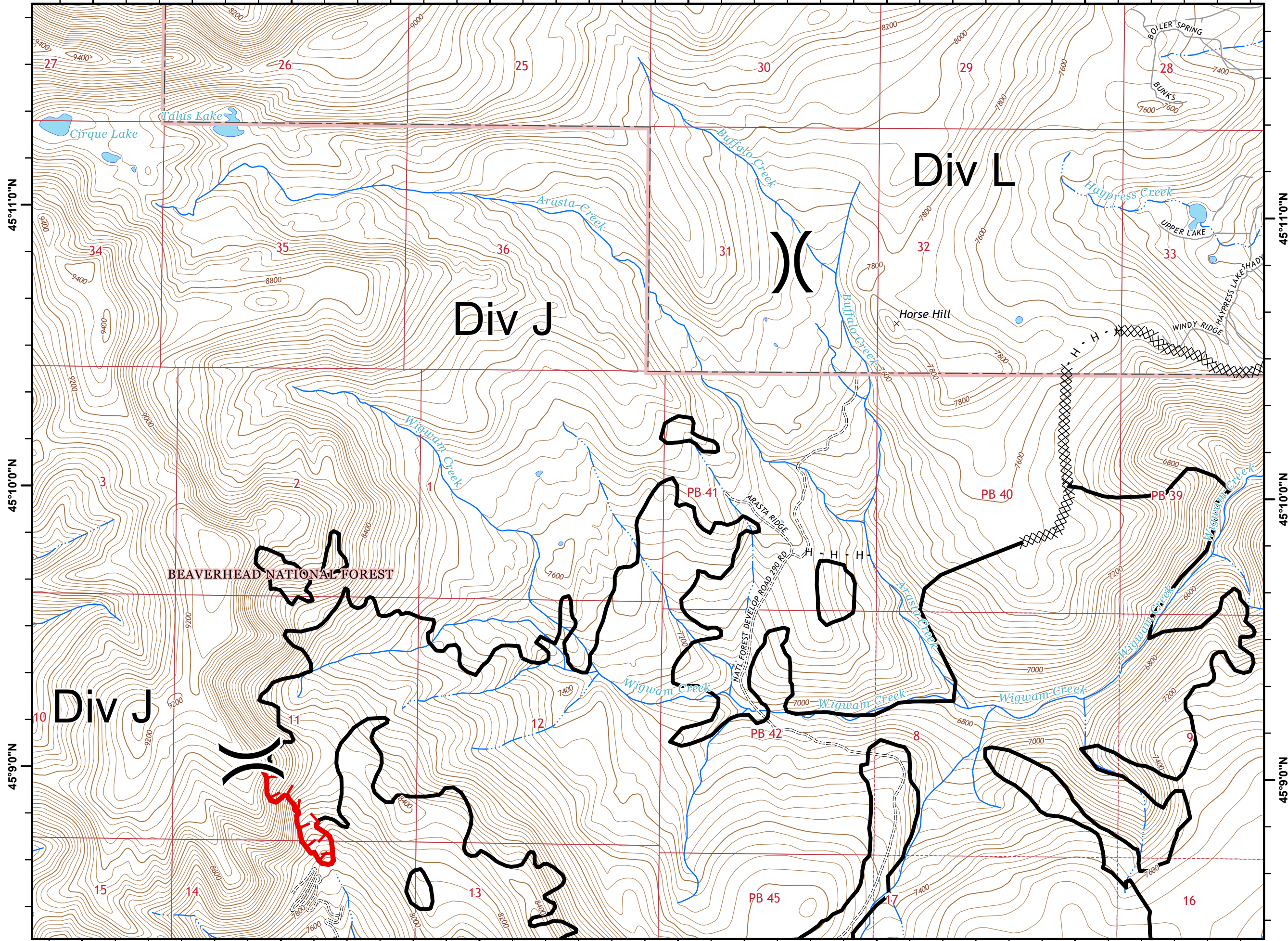
**Map Index**



QR Code

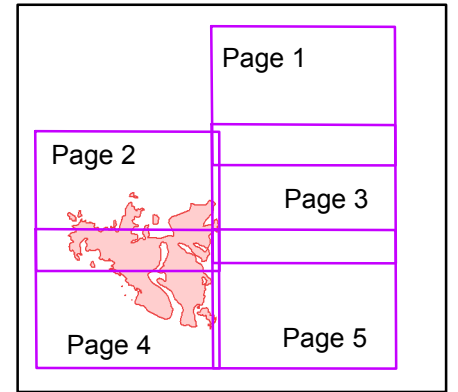
Miles





- Legend**
- Drop Point
  - Helispot
  - Spot Fire
  - Dip Site
  - Division
  - Uncontrolled Fire Edge
  - Completed Doser Line
  - Completed Line
  - R - R - Road as Completed Line
  - H - H - Hand Line

**Map Index**



QR Code

Miles

111°51'0"W

111°50'0"W

111°49'0"W

111°48'0"W

111°47'0"W

111°46'0"W

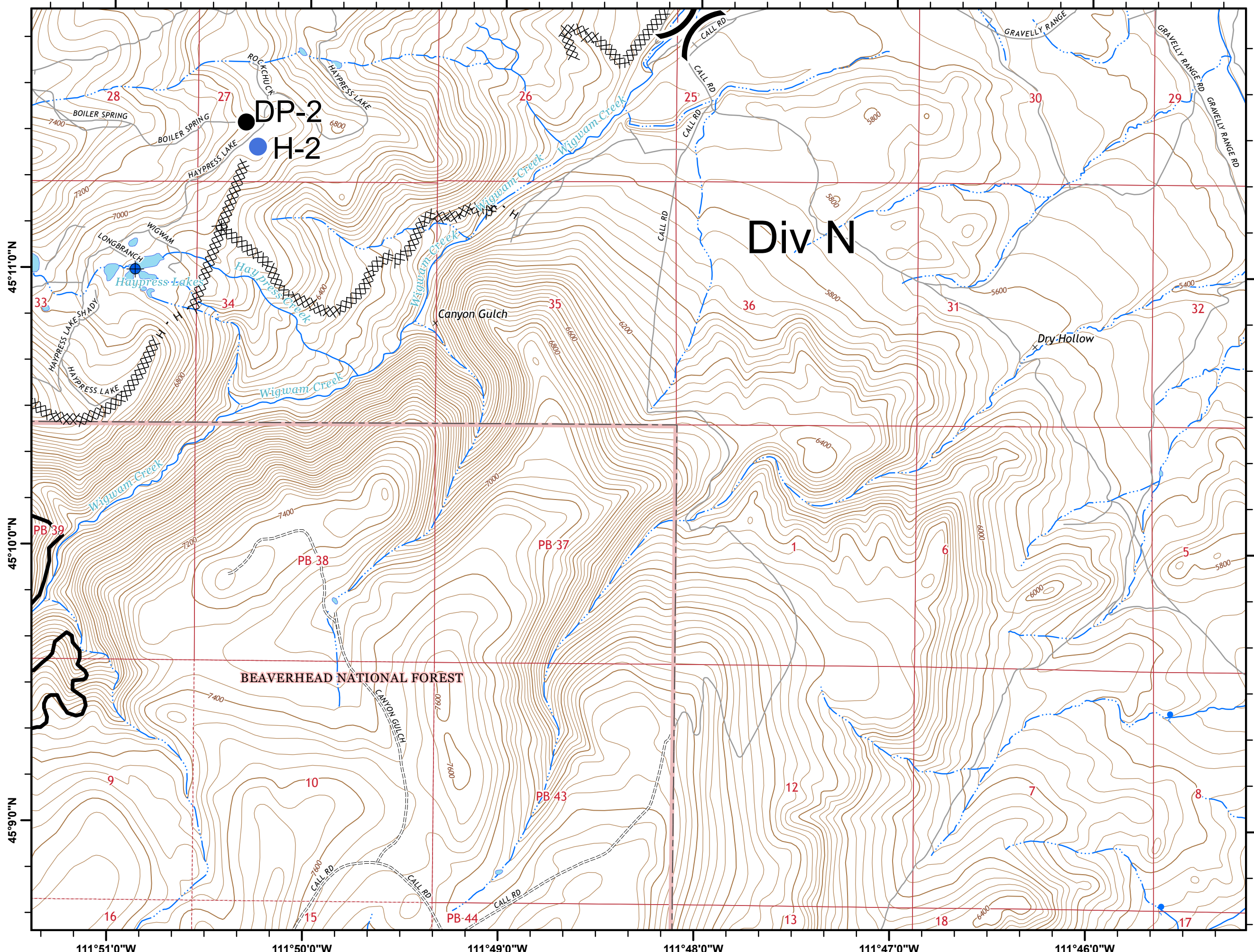
# WIGWAM FIRE

## Incident Action Plan Map

MT-BDF-003305

Aug 23, 2018

Page 3 of 5



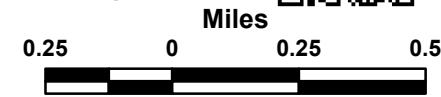
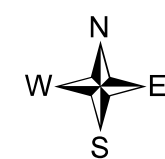
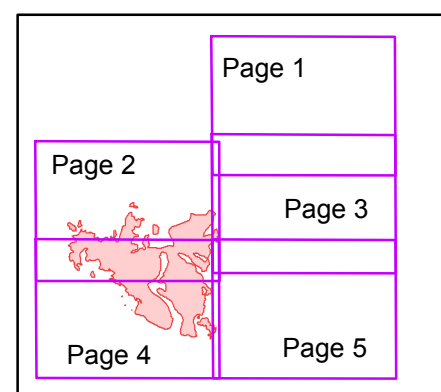
# Div N

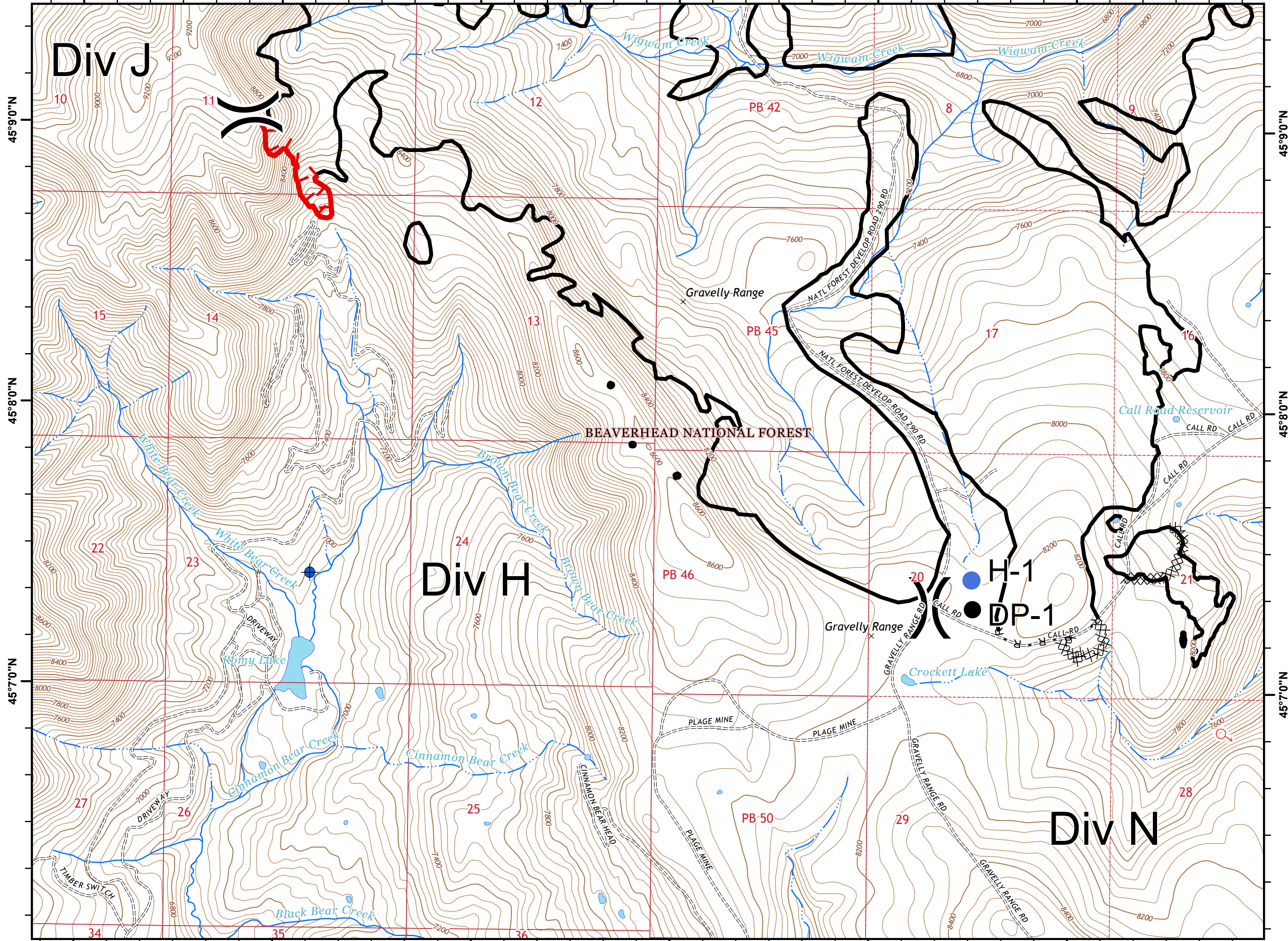
BEAVERHEAD NATIONAL FOREST

### Legend

- Drop Point
- Helispot
- Spot Fire
- Dip Site
- Division
- Uncontrolled Fire Edge
- Completed Doser Line
- Completed Line
- R - R - Road as Completed Line
- H - H - Hand Line

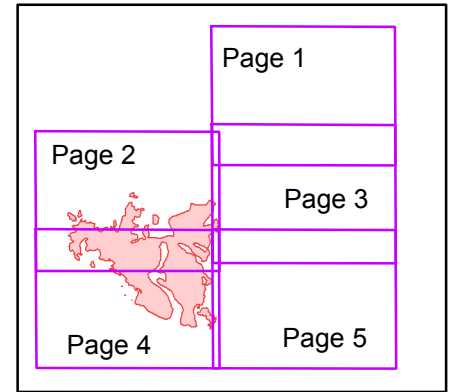
### Map Index



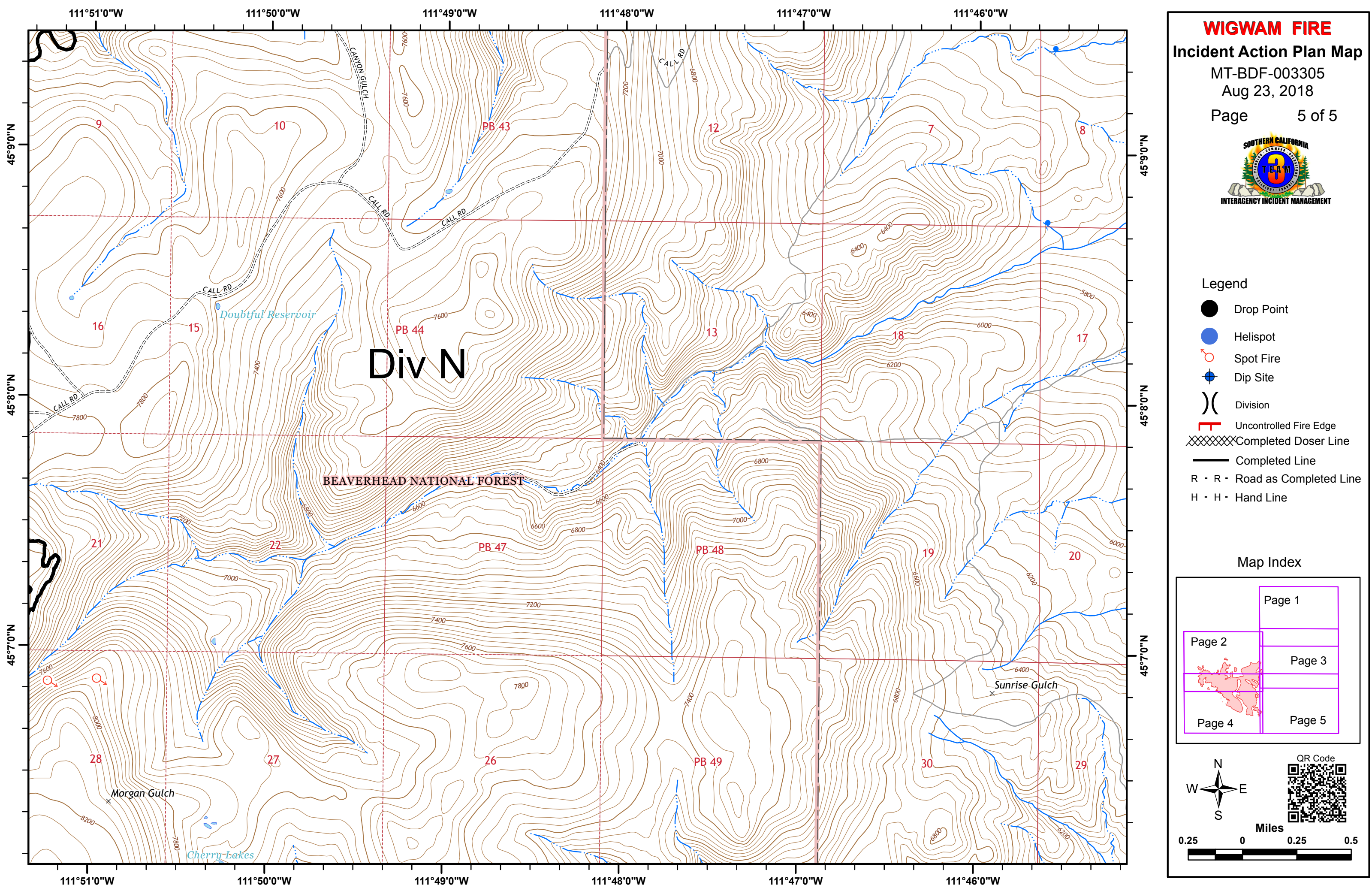










- Legend**
- Drop Point
  - Helispot
  - ♂ Spot Fire
  - ⊕ Dip Site
  - ) Division
  - ┌ Uncontrolled Fire Edge
  - ▣ Completed Doser Line
  - Completed Line
  - R · R · Road as Completed Line
  - H · H · Hand Line

**Map Index**



North arrow and scale bar (0 to 0.5 Miles). QR Code for more information.



- Legend**
-  Drop Point
  -  Helispot
  -  Spot Fire
  -  Dip Site
  -  Division
  -  Uncontrolled Fire Edge
  -  Completed Doser Line
  -  Completed Line
  - R - R - Road as Completed Line
  - H - H - Hand Line

