

WIGWAM FIRE

Incident Action Plan Map

MT-BDF-003305

Aug 25, 2018

Page 1 of 5

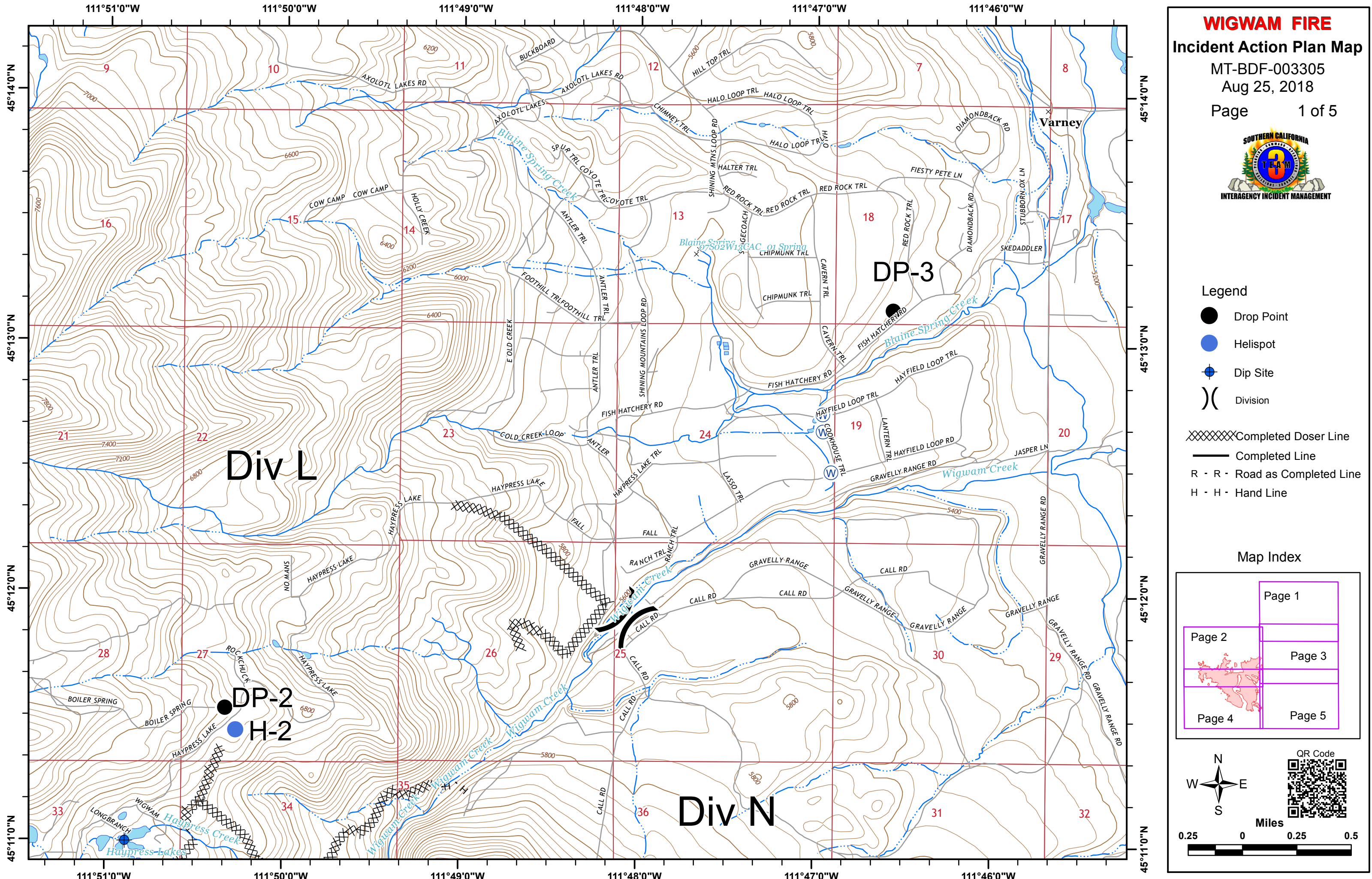
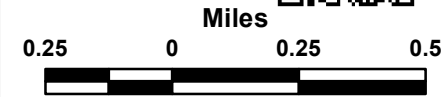
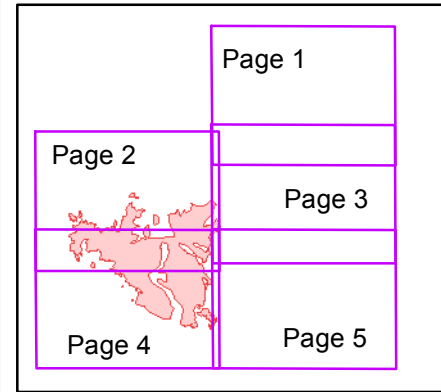


Legend

- Drop Point
- Helispot
- Dip Site
- Division

- Completed Doser Line
- Completed Line
- R - R - Road as Completed Line
- H - H - Hand Line

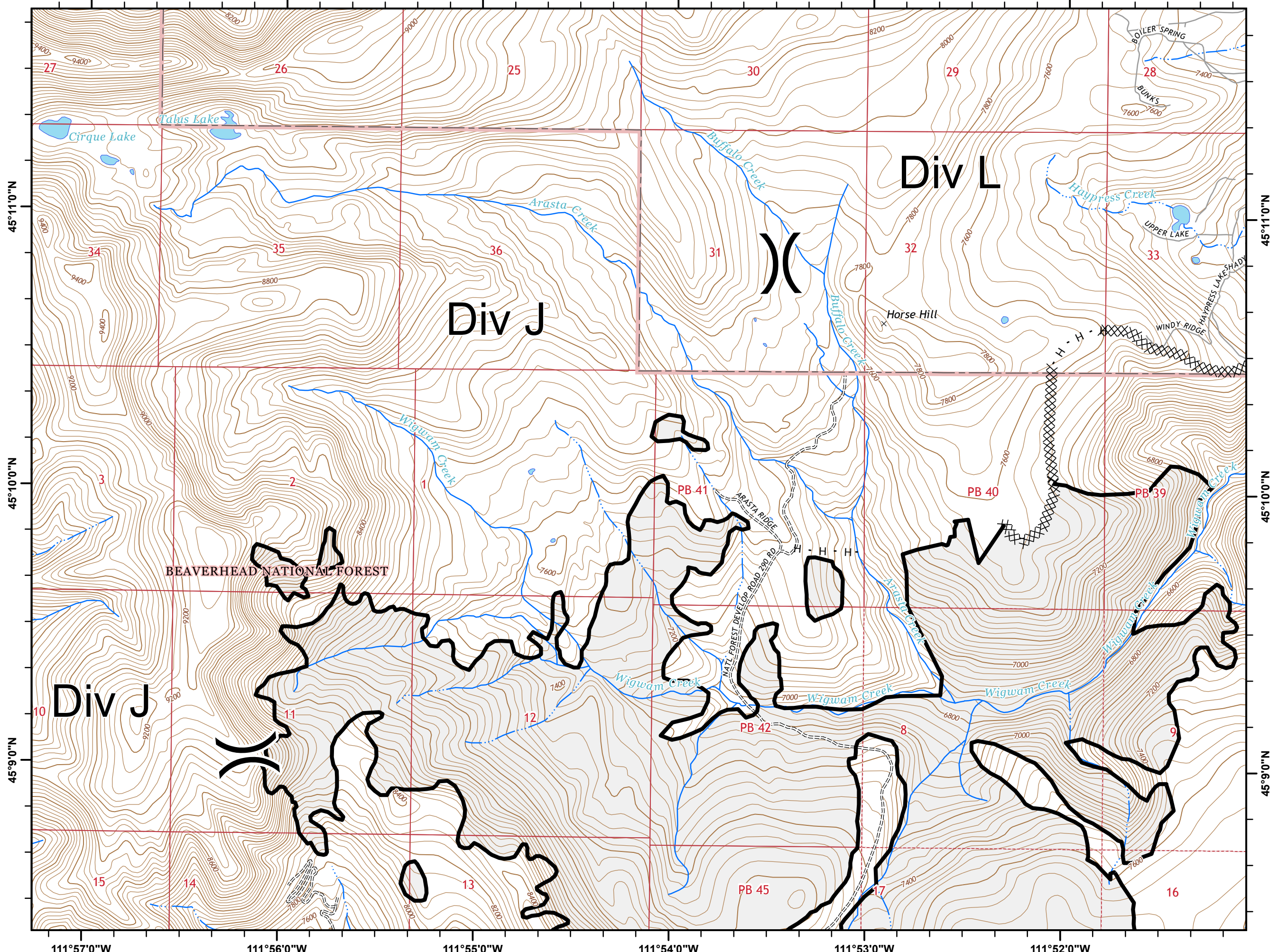
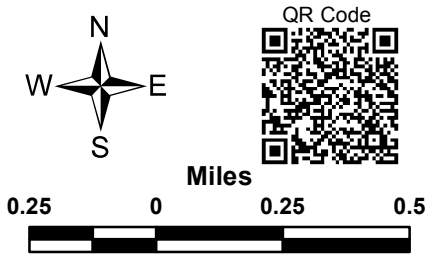
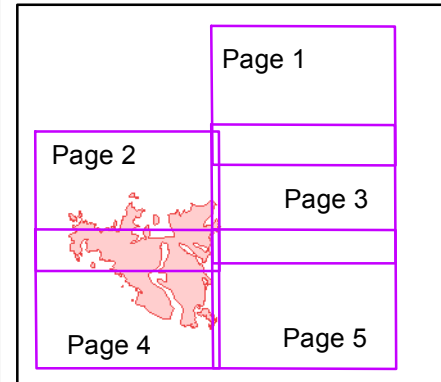
Map Index





- Legend**
- Drop Point
 - Helispot
 - ⊕ Dip Site
 -) (Division
 - XXXXXX Completed Doser Line
 - Completed Line
 - R · R · Road as Completed Line
 - H · H · Hand Line

Map Index



45°11'0"N
45°10'0"N
45°9'0"N

45°11'0"N
45°10'0"N
45°9'0"N

111°51'0"W

111°50'0"W

111°49'0"W

111°48'0"W

111°47'0"W

111°46'0"W

WIGWAM FIRE

Incident Action Plan Map

MT-BDF-003305

Aug 25, 2018

Page 3 of 5



Div N

● DP-2

● H-2

Legend

- Drop Point
- Helispot
- ⊕ Dip Site
-) Division

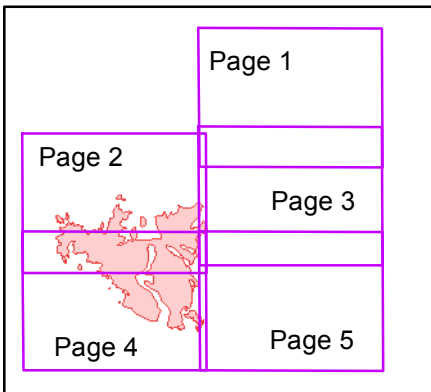
XXXXXX Completed Doser Line

— Completed Line

R · R · Road as Completed Line

H · H · Hand Line

Map Index



QR Code



Miles

0.25 0 0.25 0.5



45°11'0"N

45°11'0"N

45°10'0"N

45°10'0"N

45°9'0"N

45°9'0"N

111°51'0"W

111°50'0"W

111°49'0"W

111°48'0"W

111°47'0"W

111°46'0"W

BEAVERHEAD NATIONAL FOREST

CANYON GULCH

Canyon Gulch

Dry Hollow

CALL RD

GRAVELLY RANGE

GRAVELLY RANGE RD

BOILER SPRING

HAYPRESS LAKE

LONGBRANCH

HAYPRESS LAKE SHADY

HAYPRESS LAKE

PB 39

PB 38

PB 37

PB 43

PB 44

PB 39

PB 38

PB 37

28

27

26

25

30

29

33

34

35

36

31

32

1

6

5

9

10

12

7

8

16

15

13

18

17

11

14

19

20

21

22

23

24

25

26

27

28

29

30

31

32

33

34

35

36

37

38

39

40

41

42

43

44

45

46

47

48

49

50

51

52

53

54

55

56

57

58

59

60

61

62

63

64

65

66

67

68

69

70

71

72

73

74

75

76

77

78

79

80

81

82

83

84

85

86

87

88

89

90

91

92

93

94

95

96

97

98

99

100

101

102

103

104

105

106

107

108

109

110

111

112

113

114

115

116

117

118

119

120

121

122

123

124

125

126

127

128

129

130

131

132

133

134

135

136

137

138

139

140

141

142

143

144

145

146

147

148

149

150

151

152

153

154

155

156

157

158

159

160

161

162

163

164

165

166

167

168

169

170

171

172

173

174

175

176

177

178

179

180

181

182

183

184

185

186

187

188

189

190

191

192

193

194

195

196

197

198

199

200

201

202

203

204

205

206

207

208

209

210

211

212

213

214

215

216

217

218

219

220

221

222

223

224

225

226

227

228

229

230

231

232

233

234

235

236

237

238

239

240

241

242

243

244

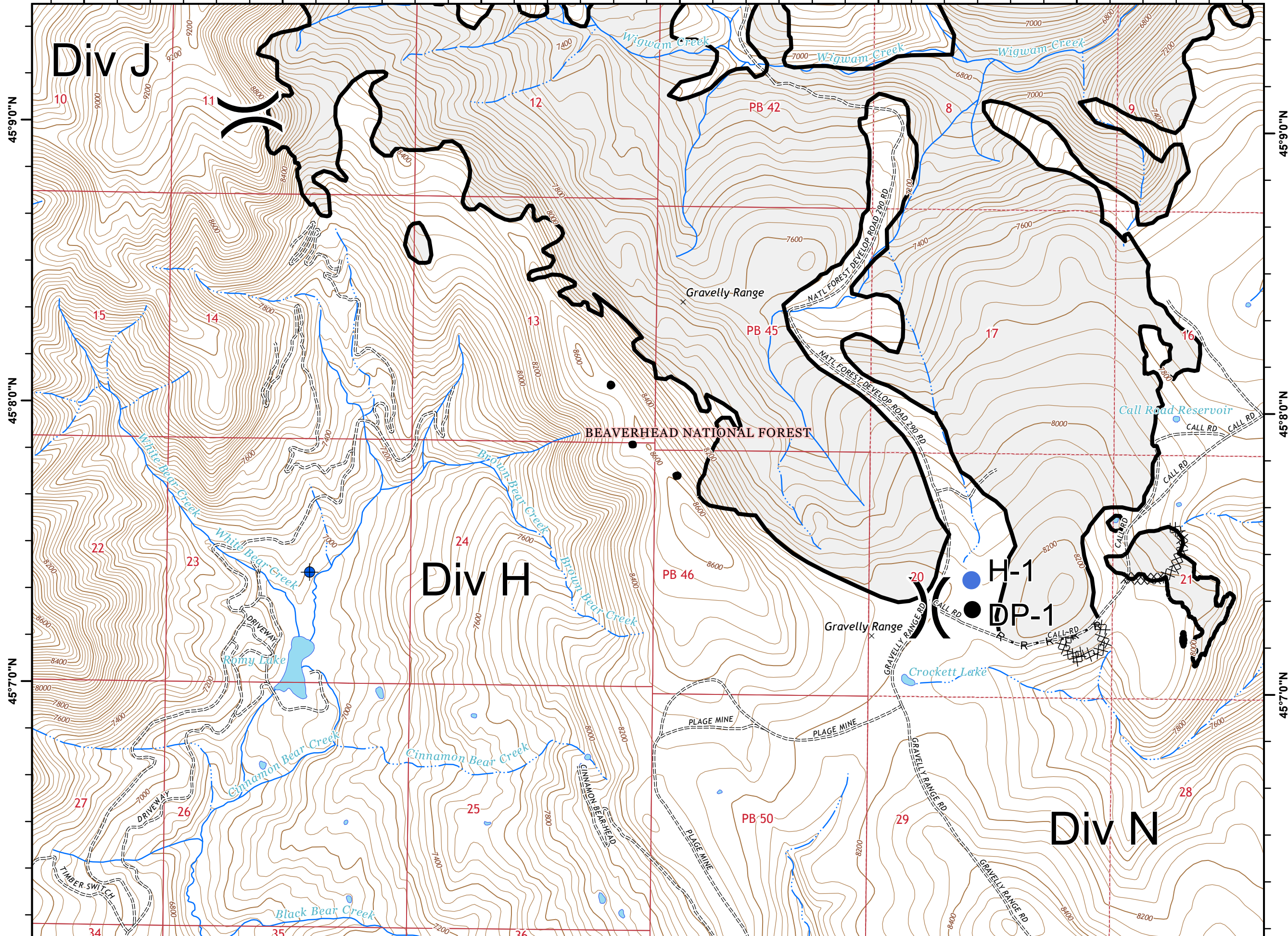
245

246

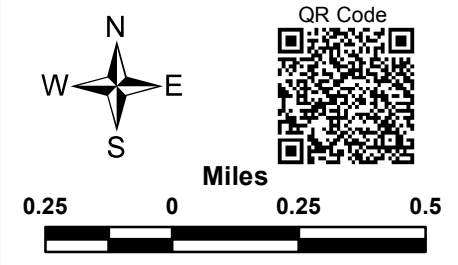
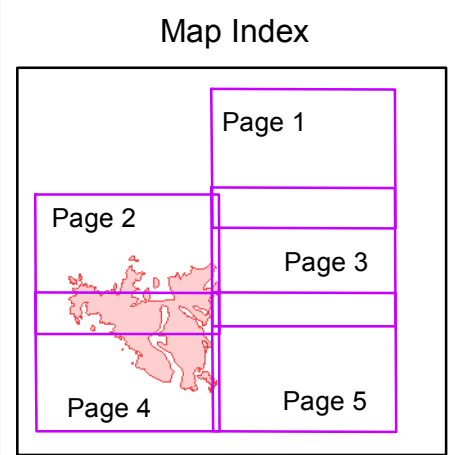
247

248

249</



- Legend**
- Drop Point
 - Helispot
 - ⊕ Dip Site
 -) (Division
 - XXXXXX Completed Doser Line
 - Completed Line
 - R · R · Road as Completed Line
 - H · H · Hand Line



WIGWAM FIRE

Incident Action Plan Map

MT-BDF-003305

Aug 25, 2018

Page 5 of 5



Legend

- Drop Point
- Helispot
- ⊕ Dip Site
-) Division

- XXXXXX Completed Doser Line
- Completed Line
- R - R - Road as Completed Line
- H - H - Hand Line

Map Index

