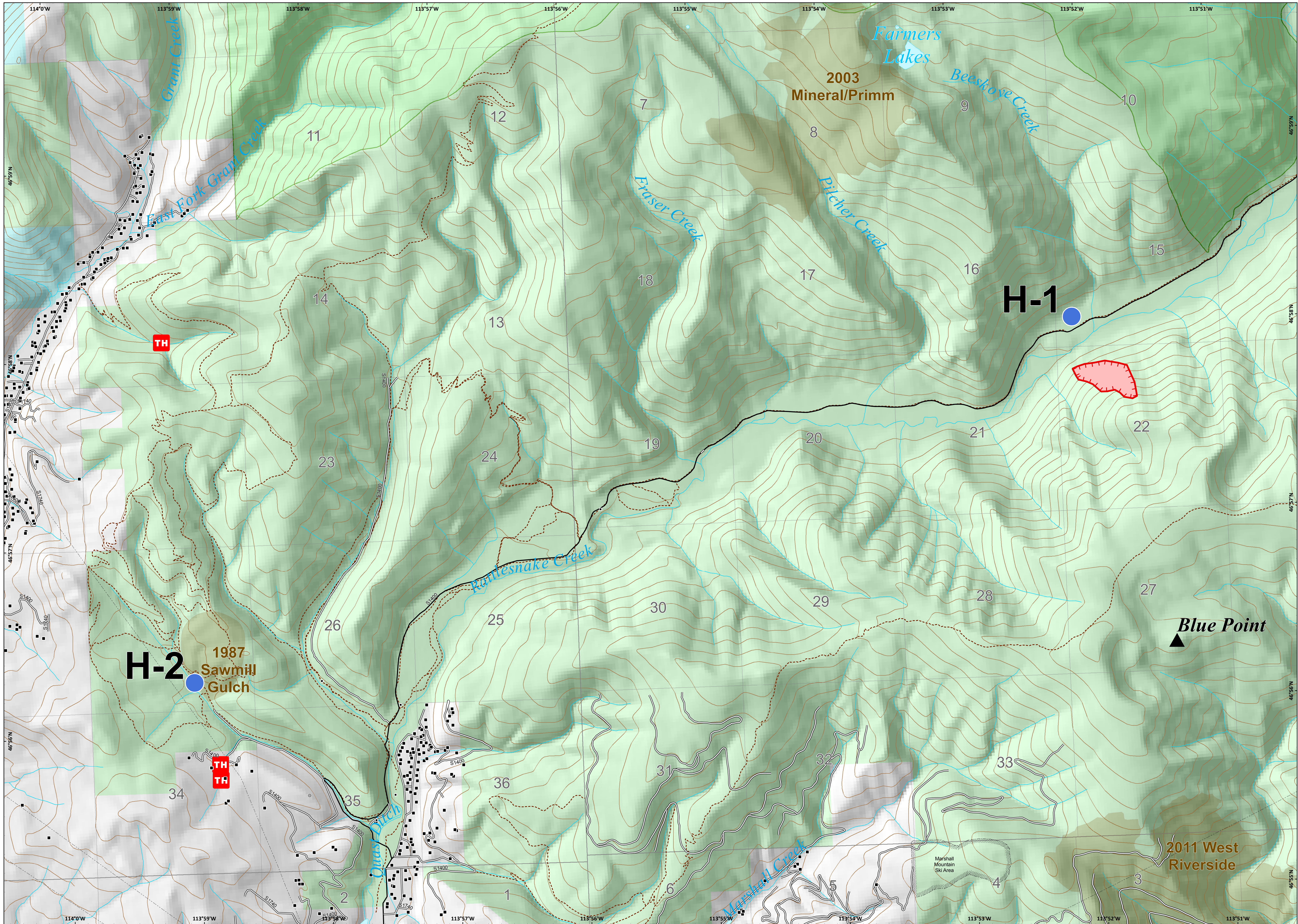
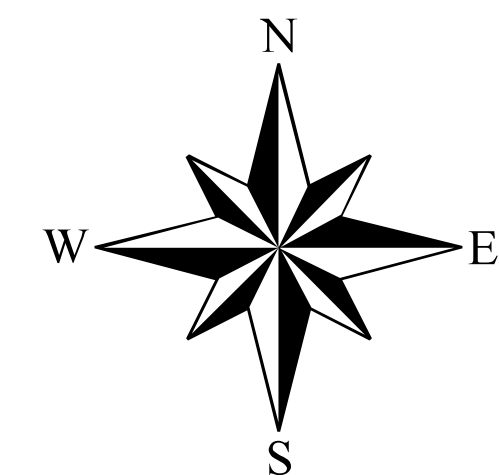


# BEE SKOVE



**Briefing**  
 MT-LNF-001232  
 July 26, 2019

GIS fire perimeter as of  
 7/25/2019 @1200  
 ~35 acres



- Structures
- USFS Buildings
- ▲ Peaks
- Electronic Sites
- TH TRAILHEAD
- Transmission Lines
- Local Connecting Road
- Local Road
- USFS Trails
- Trail
- Streams
- Fire History
- ▨ Special Interest Management Areas
- Lake/Pond
- Wilderness Areas
- Forest Service
- State