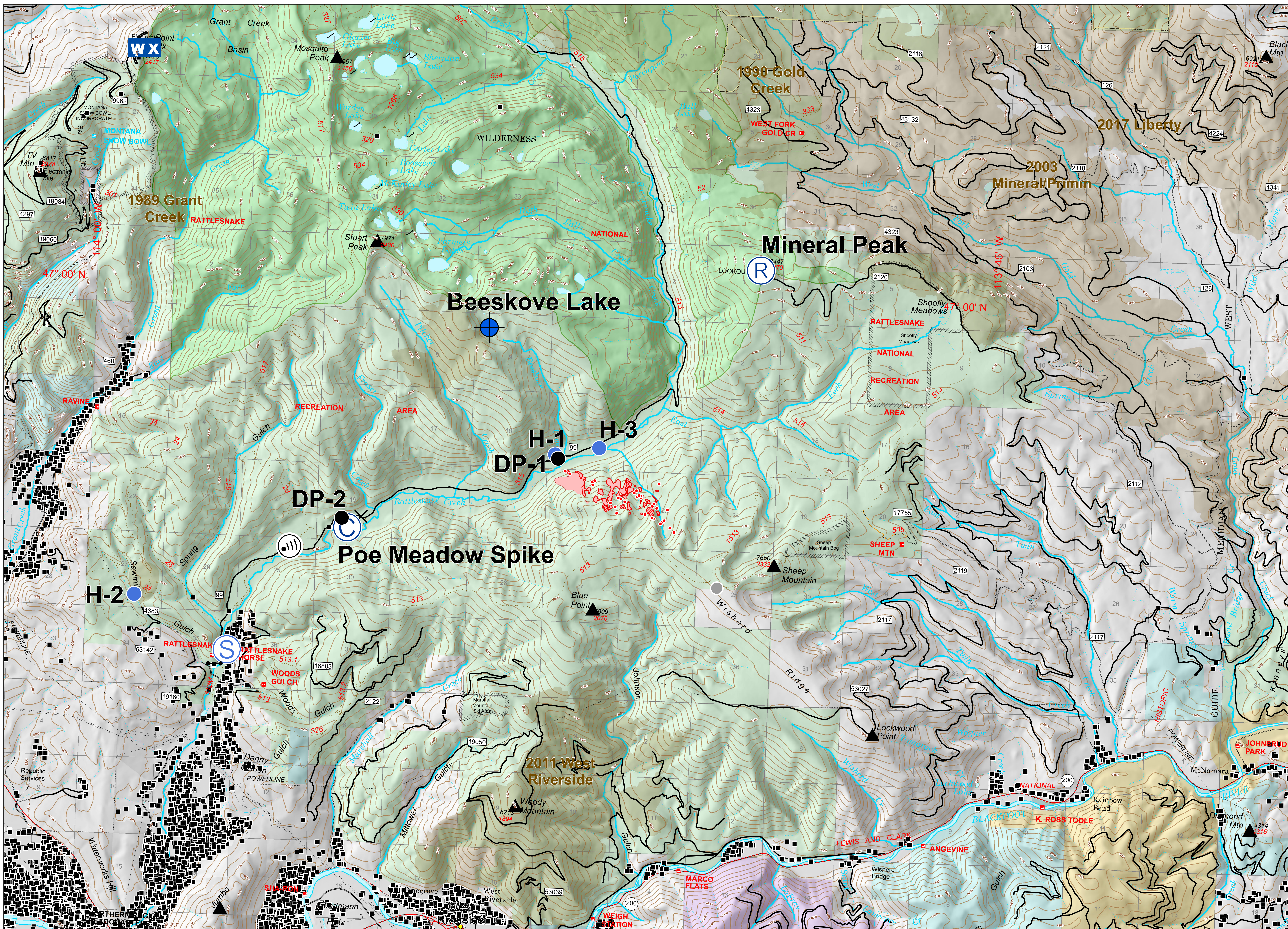
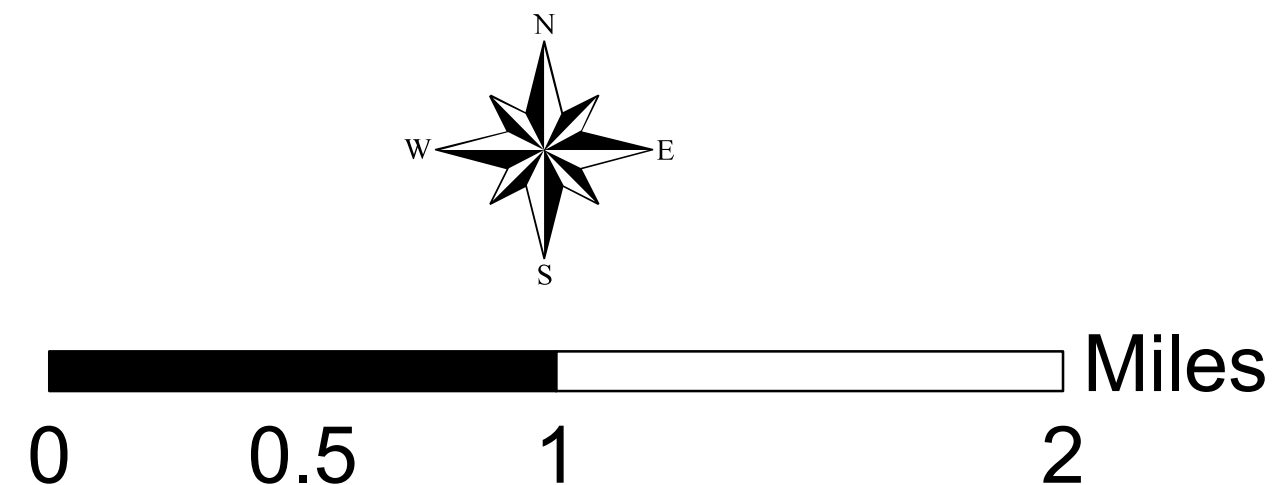


# BEESKOVE



**Briefing**  
 MT-LNF-001232  
 July 28, 2019

IR Perimeter as of  
 7/27/2019 @ 2344  
 115 acres



- |  |   |  |   |
|--|---|--|---|
| <ul style="list-style-type: none"> <li>Wildfire Daily Fire Perimeter</li> <li>FISHING AREA</li> <li>OFFICE - SUPERVISORS / HDQTRS or RO (FS)</li> <li>SKIING - DOWNHILL</li> <li>TRAILHEAD</li> <li>Structures</li> <li>Dams</li> <li>Towns</li> </ul> | <ul style="list-style-type: none"> <li>Peaks</li> <li>Electronic Sites</li> <li>RAWFS Stations</li> <li>Repeaters</li> <li>Transmission Lines</li> <li>ROAD - URBAN AREAS</li> <li>R.R. STD GAUGE - SINGLE TRACK</li> <li>HIGHWAY - SECONDARY</li> <li>ROAD - LDR, PAVED</li> </ul> | <ul style="list-style-type: none"> <li>ROAD - LDR, COMPOSITION UNSPECIFIED</li> <li>ROAD - UNIMPROVED DIRT</li> <li>TRAIL - MOTORIZED USE</li> <li>TRAIL - NON-MOTORIZED USE</li> <li>ROAD - URBAN AREAS</li> <li>R.R. STD GAUGE - SINGLE TRACK</li> <li>Fire History</li> <li>Roadless Area</li> <li>Special Interest Management Areas</li> </ul> | <ul style="list-style-type: none"> <li>Section</li> <li>Wilderness Areas</li> <li>Bureau of Land Management</li> <li>Forest Service</li> <li>State</li> <li>Other State</li> <li>Local Government</li> <li>Other</li> <li>IR Intense Heat</li> <li>IR Scattered Heat</li> <li>IR Isolated Heat Sources</li> </ul> |
|--|---|--|---|

