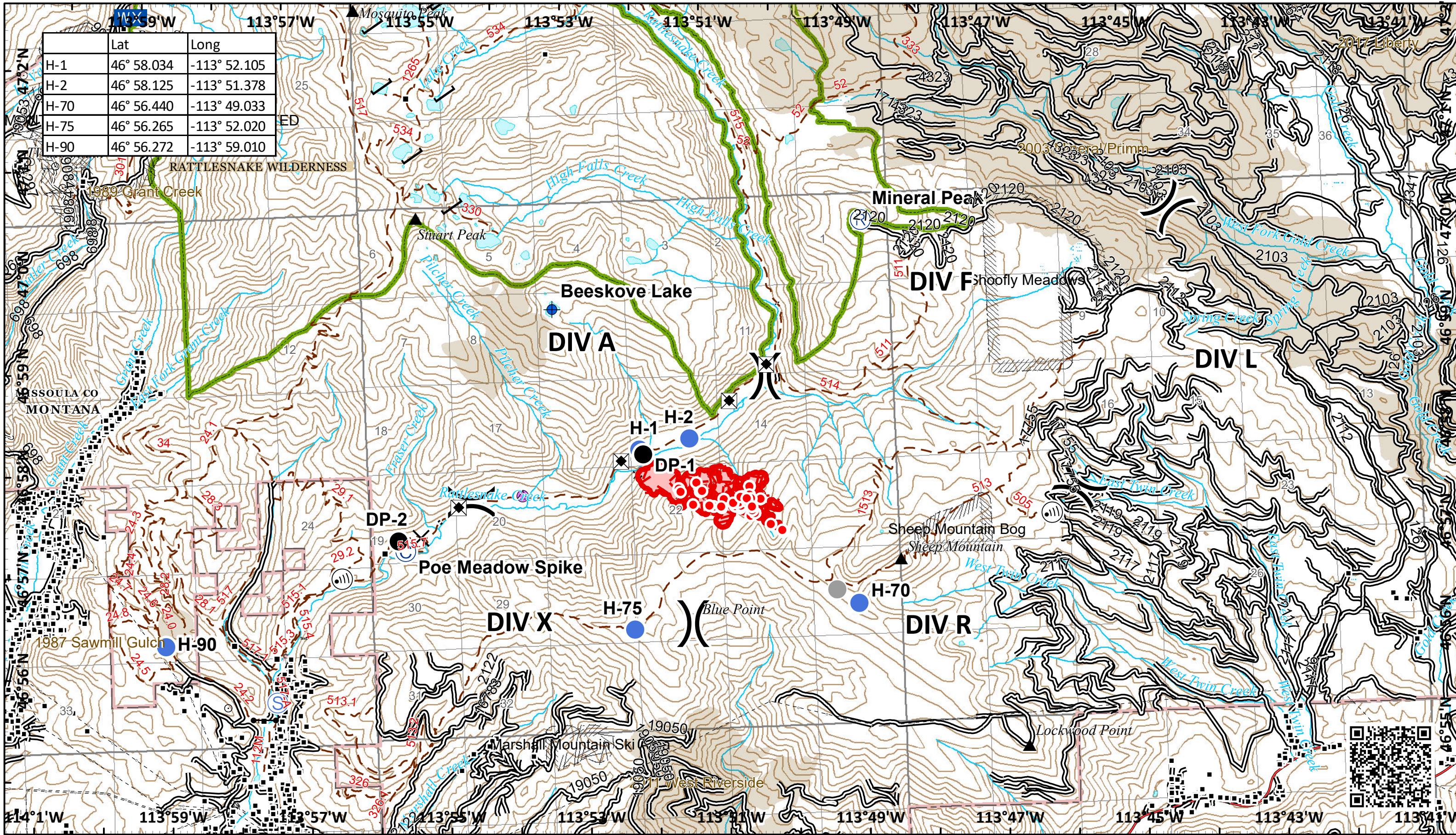
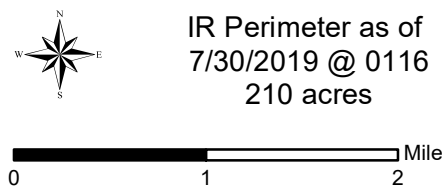


	Lat	Long
H-1	46° 58.034	-113° 52.105
H-2	46° 58.125	-113° 51.378
H-70	46° 56.440	-113° 49.033
H-75	46° 56.265	-113° 52.020
H-90	46° 56.272	-113° 59.010



**Beeskove  
IAP**  
MT-LNF-001232  
July 30, 2019



IR Perimeter as of  
7/30/2019 @ 0116  
210 acres

- |                          |            |                     |              |                |                           |                               |  |
|--------------------------|------------|---------------------|--------------|----------------|---------------------------|-------------------------------|--|
| IR Isolated Heat Sources | Drop Point | Internet Access     | Repeater     | Other          | Structures                | Repeaters                     | Secondary Highway or Major Connecting Road |
| Camp                     | Gate       | Mobile Weather Unit | Road Repair  | Division Break | Dams                      | Transmission Lines            | Local Road                                 |
| Closure                  | Hellsite   | Repair Point        | Staging Area | Peaks          | Electronic Sites          | Uncontrolled Fire Edge        | 4WD  |
| Dip Site                 |            |                     |              | RAWs Stations  | H - H Completed Hand Line | Wildfire Daily Fire Perimeter | Special Interest Management Areas          |

