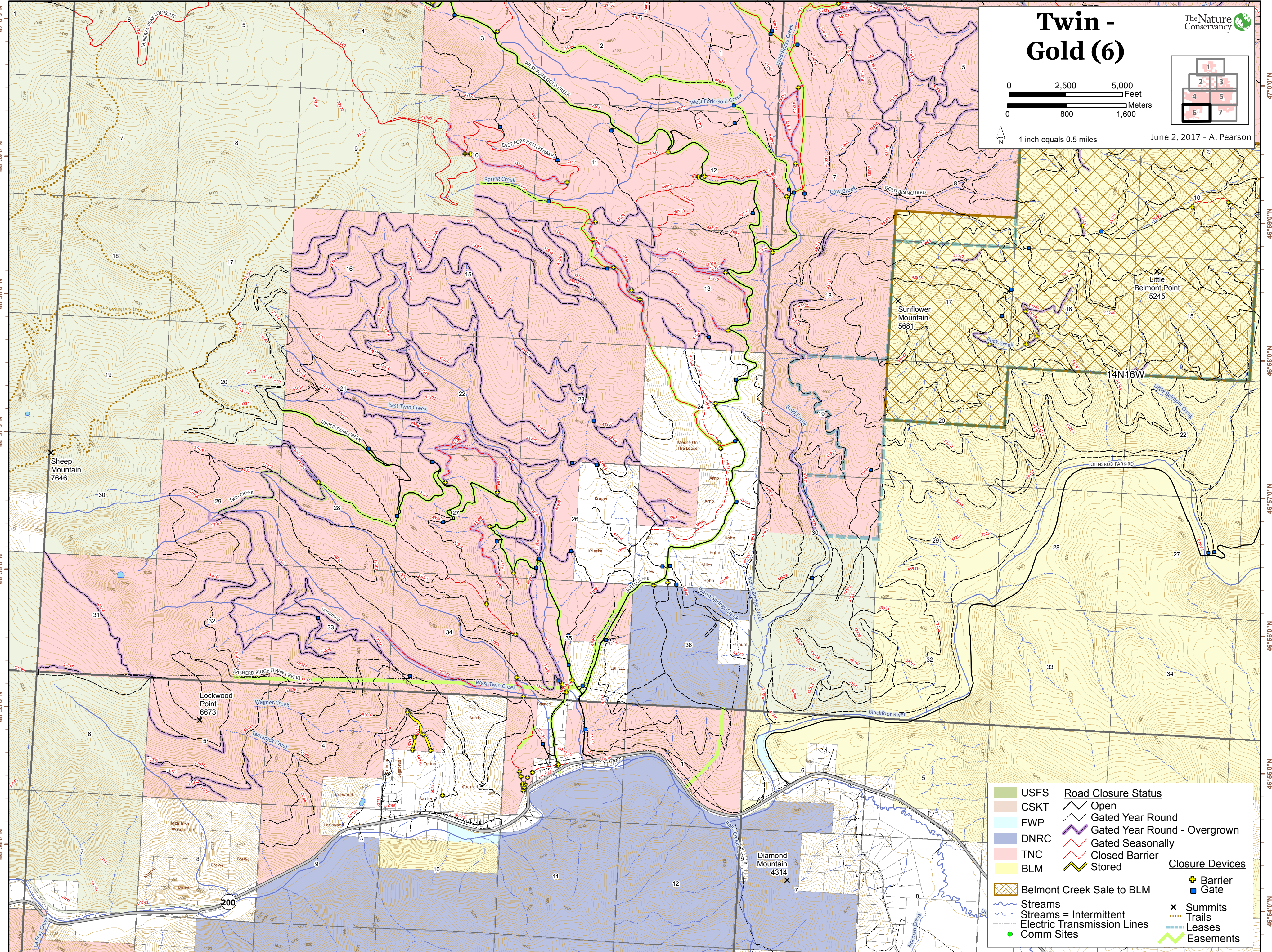
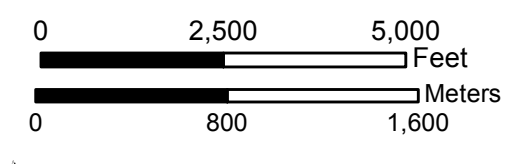


113°49'0"W 113°48'0"W 113°47'0"W 113°46'0"W 113°45'0"W 113°44'0"W 113°43'0"W 113°42'0"W 113°41'0"W 113°40'0"W 113°39'0"W 113°38'0"W 113°37'0"W 113°36'0"W

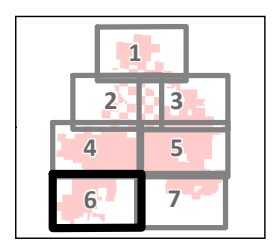


Twin - Gold (6)



1 inch equals 0.5 miles

June 2, 2017 - A. Pearson



USFS	Road Closure Status
CSKT	Open
FWP	Gated Year Round
DNRC	Gated Year Round - Overgrown
TNC	Gated Seasonally
BLM	Closed Barrier
Belmont Creek Sale to BLM	Stored
Streams	Closure Devices
Streams = Intermittent	Barrier
Electric Transmission Lines	Gate
Comm Sites	Summits
	Trails
	Leases
	Easements

113°48'0"W 113°47'0"W 113°46'0"W 113°45'0"W 113°44'0"W 113°43'0"W 113°42'0"W 113°41'0"W 113°40'0"W 113°39'0"W 113°38'0"W 113°37'0"W 113°36'0"W

47°0'0"N
46°59'0"N
46°58'0"N
46°57'0"N
46°56'0"N
46°55'0"N
46°54'0"N

47°0'0"N
46°59'0"N
46°58'0"N
46°57'0"N
46°56'0"N
46°55'0"N
46°54'0"N