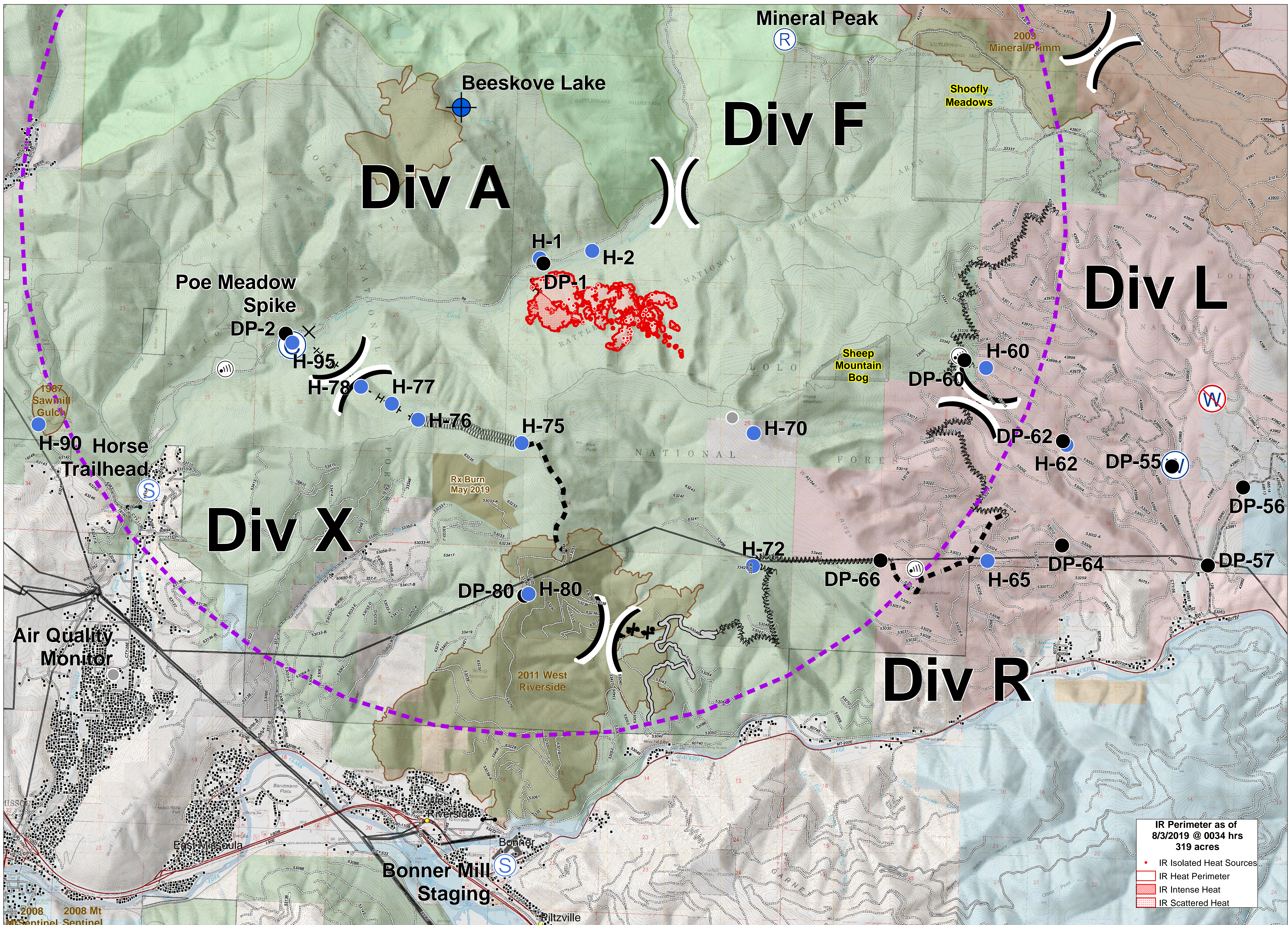


BEESEKOVES



IR Perimeter as of 8/3/2019 @ 0034 hrs 319 acres

- IR Isolated Heat Sources
- IR Heat Perimeter
- IR Intense Heat
- IR Scattered Heat



Briefing
 MT-LNF-001232
 August 3, 2019

- | | | | | | | | |
|---|--|---|---|---|--|---|--|
| <ul style="list-style-type: none"> Uncontrolled Fire Edge Temporary Flight Restriction Access or Improved Road Completed Hand Line Line Break Completed Proposed Dozer Line Fire Break Planned or Incomplete | <ul style="list-style-type: none"> Planned Fire Line Camp Closure Dip Site Drop Point | <ul style="list-style-type: none"> Gate Internet Access Repeater Staging Area | <ul style="list-style-type: none"> Water Source Restricted Water Source | <ul style="list-style-type: none"> Other Division Break Wildfire Perimeter Structures Transmission Lines | <ul style="list-style-type: none"> Highway Road - Light Duty - Unspecified Composition Road - Unimproved Trail Footbridge Under/Overpass Space - Rd/R.R. Road - Light Duty - Dirt | <ul style="list-style-type: none"> Road - Light Duty - Paved Road - Light Duty - Gravel Fire History Research Natural Area Wilderness Areas US Forest Service US Bureau of Land Management | <ul style="list-style-type: none"> State of Montana The Nature Conservancy Local Government |
|---|--|---|---|---|--|---|--|

0 0.5 1 Miles