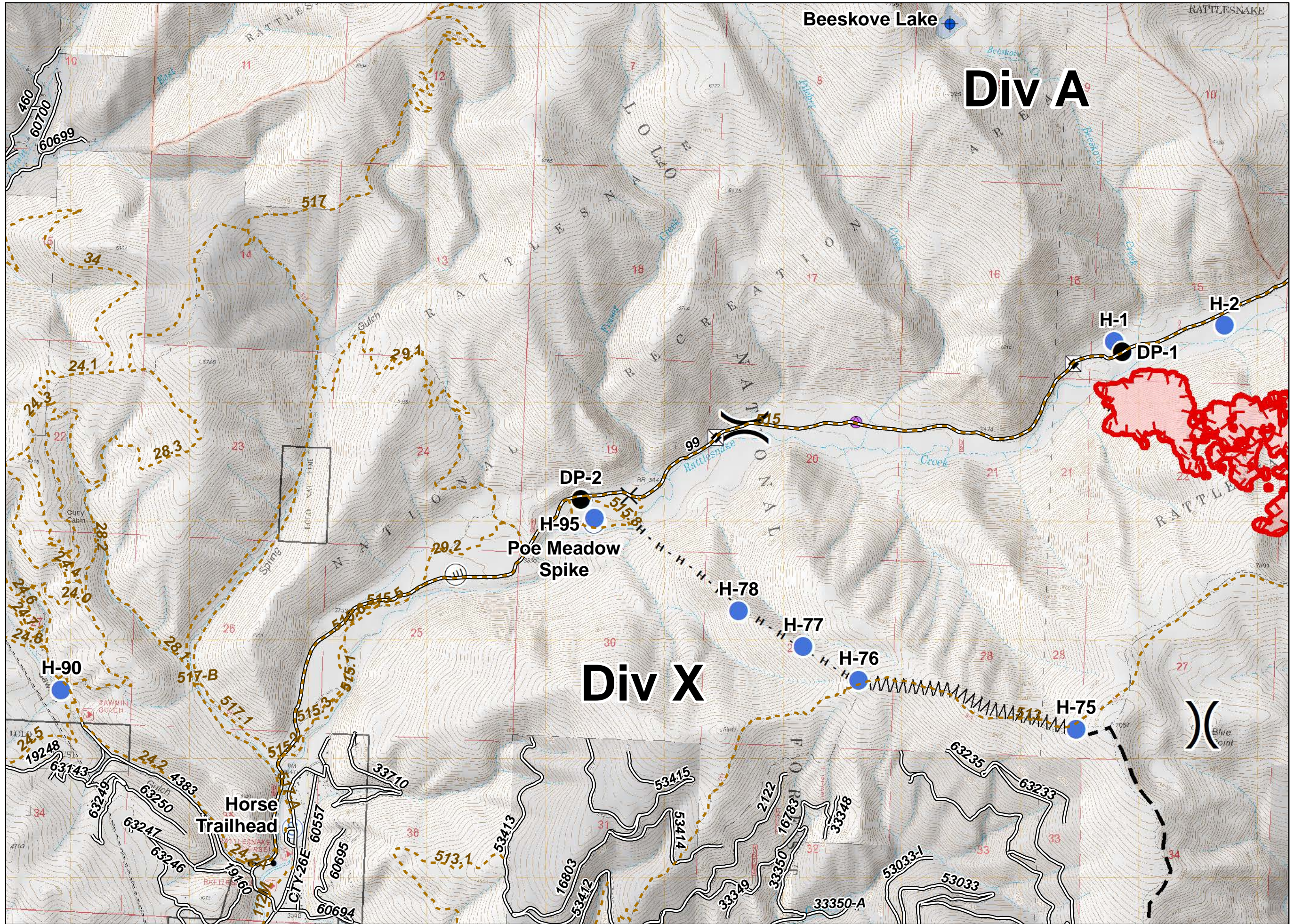
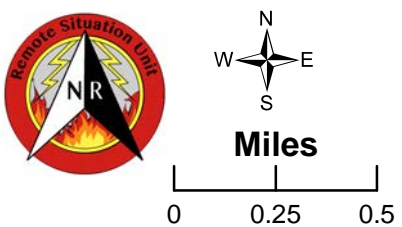
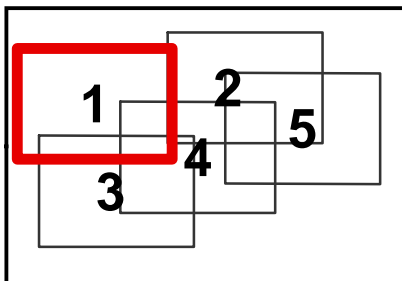
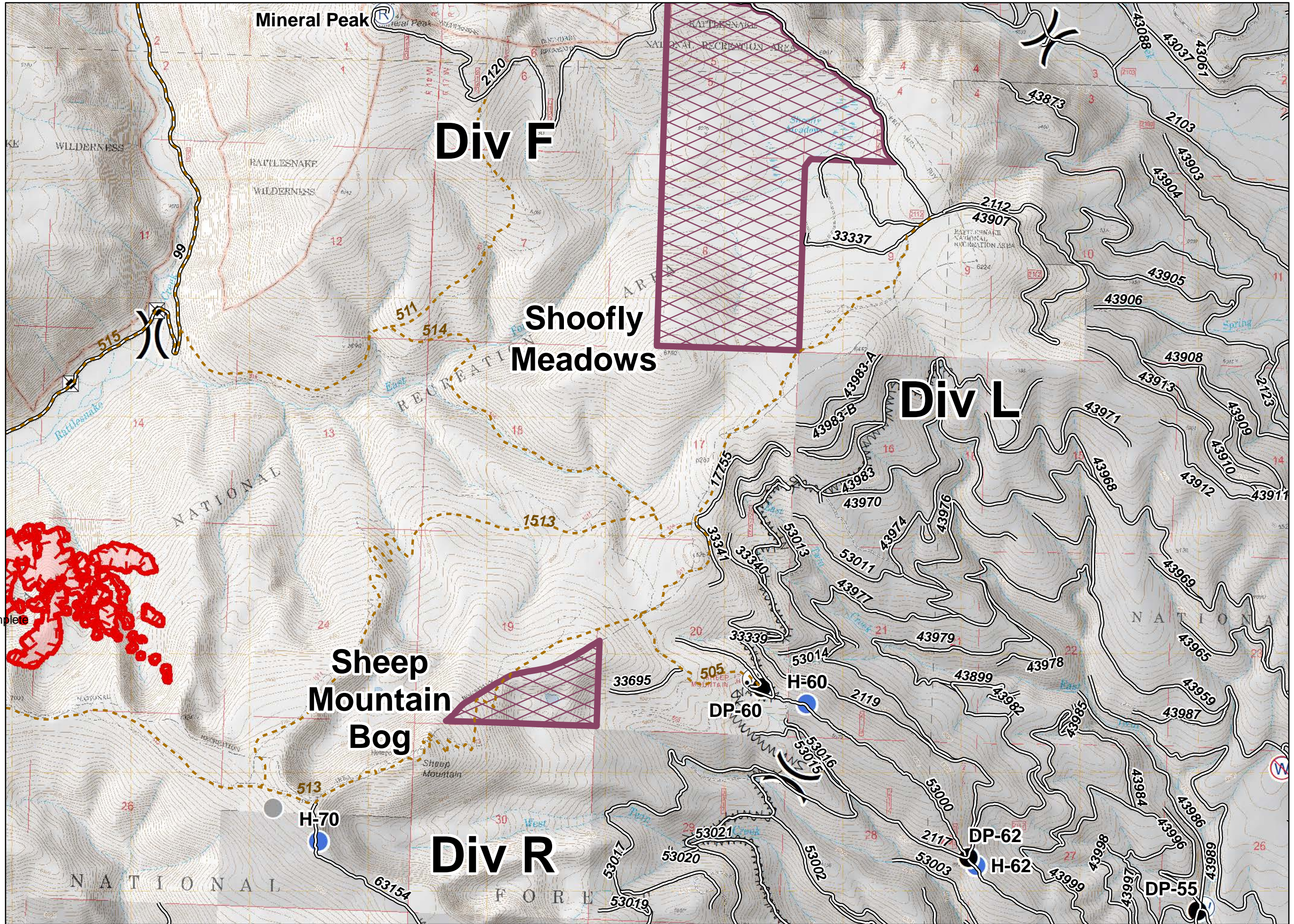
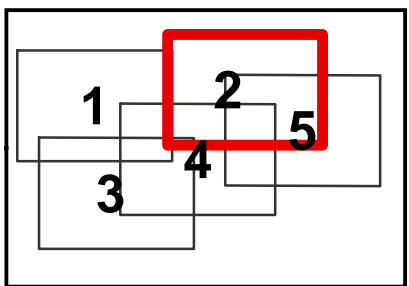


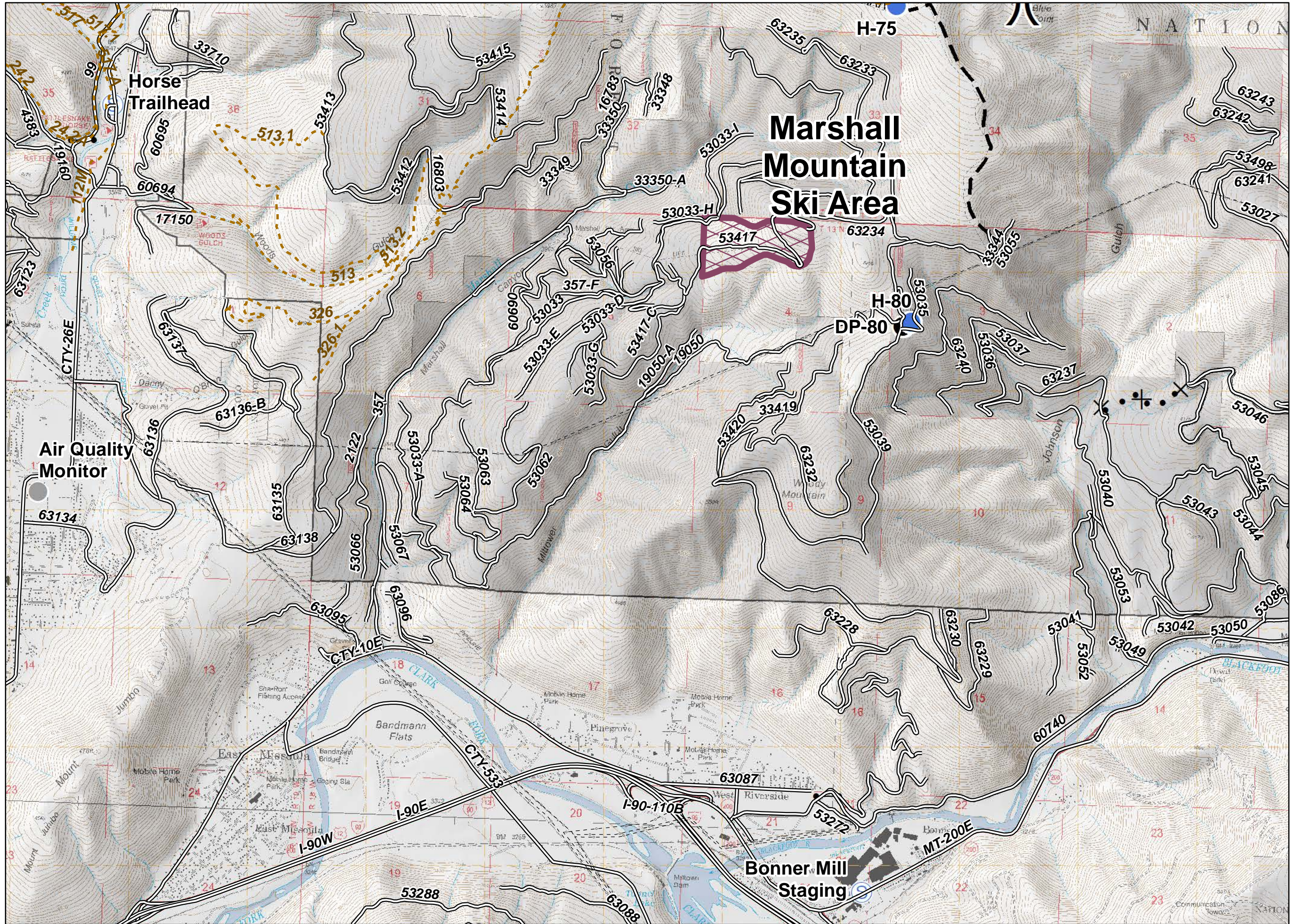
- Transmission Lines
- ⊙ Camp
- ✕ Closure
- ⊕ Dip Site
- Drop Point
- Gate
- Helispot
- ⊙ Internet Access
- ⊕ Repair Point
- ✕ Road Repair
- ⊙ Staging Area
-) (Division Break
- Uncontrolled Fire Edge
- H · H Completed Hand Line
- ⌋ Line Break Completed
- Planned Fire Line
- Wildfire Daily Fire Perimeter



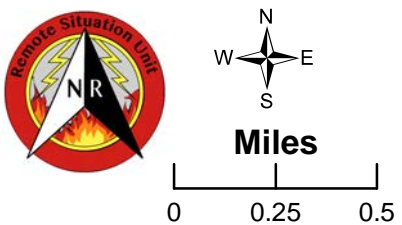
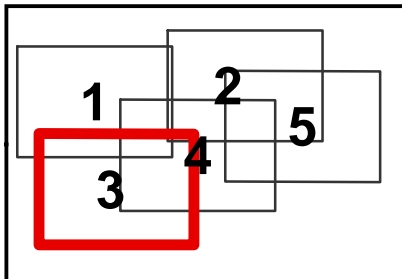
- Values at Risk
- Bridge
- Drop Point
- Helispot
- Internet Access
- Repeater
- Road Repair
- Water Source
- Restricted Water Source
- Other
- Division Break

- Uncontrolled Fire Edge
- Fire Break Planned or Incomplete
- Wildfire Daily Fire Perimeter

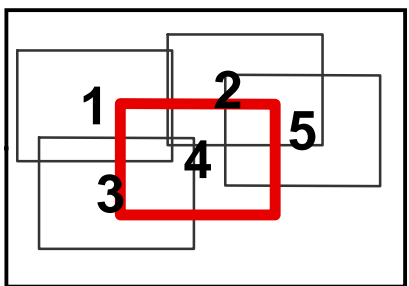




- Transmission Lines
- Values at Risk
- Drop Point
- Gate
- Helispot
- Staging Area
- Other
- Division Break
- Access or Improved Road
- Line Break Completed
- Proposed Dozer Line
- Planned Fire Line
- Wildfire Daily Fire Perimeter



- Transmission Lines
- Values at Risk
- Drop Point
- Helispot
- Internet Access
- Other
- Division Break
- Uncontrolled Fire Edge
- H - H Completed Hand Line
- Access or Improved Road
- Line Break Completed
- Proposed Dozer Line
- Fire Break Planned or Incomplete
- Planned Fire Line
- Wildfire Daily Fire Perimeter

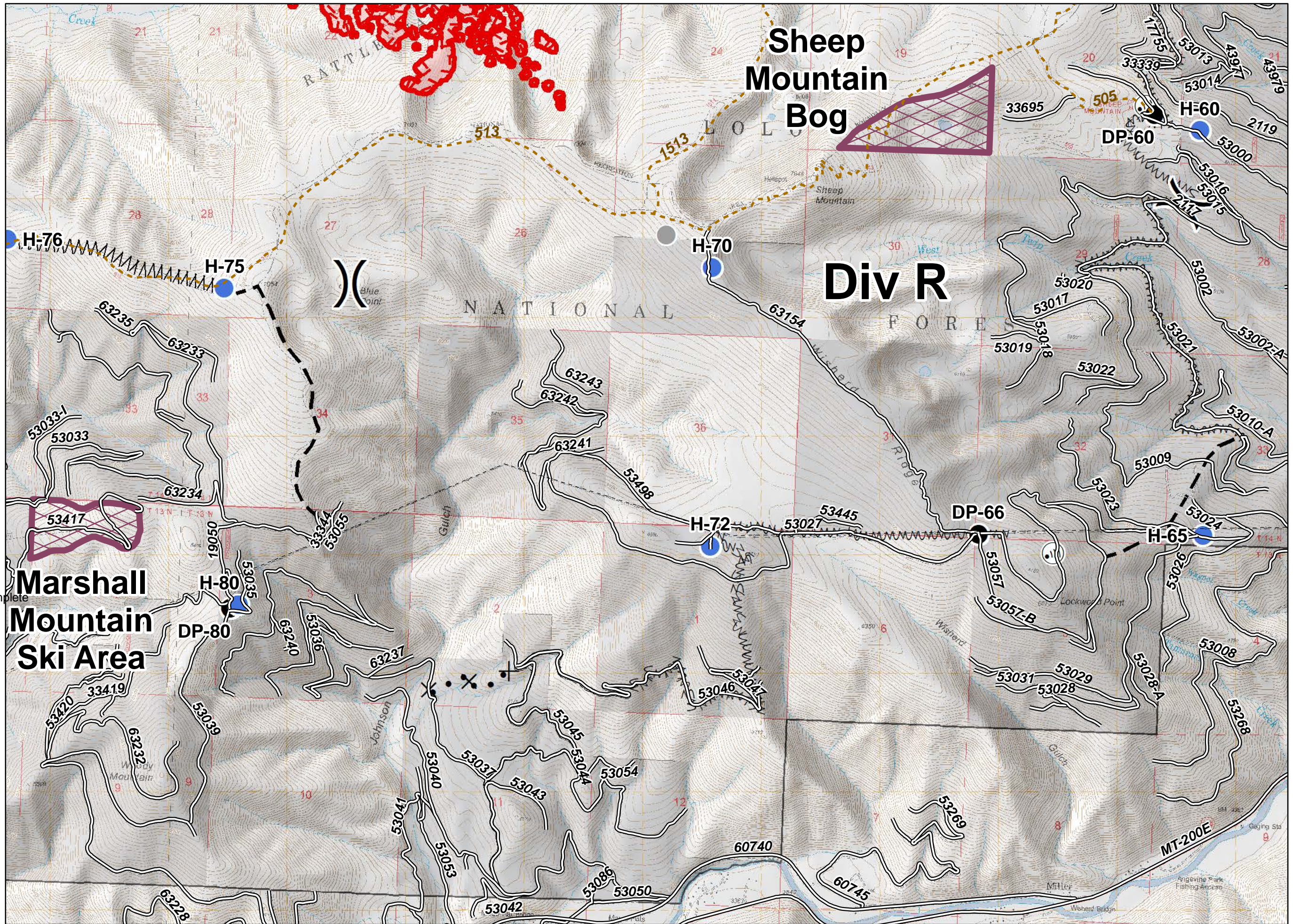


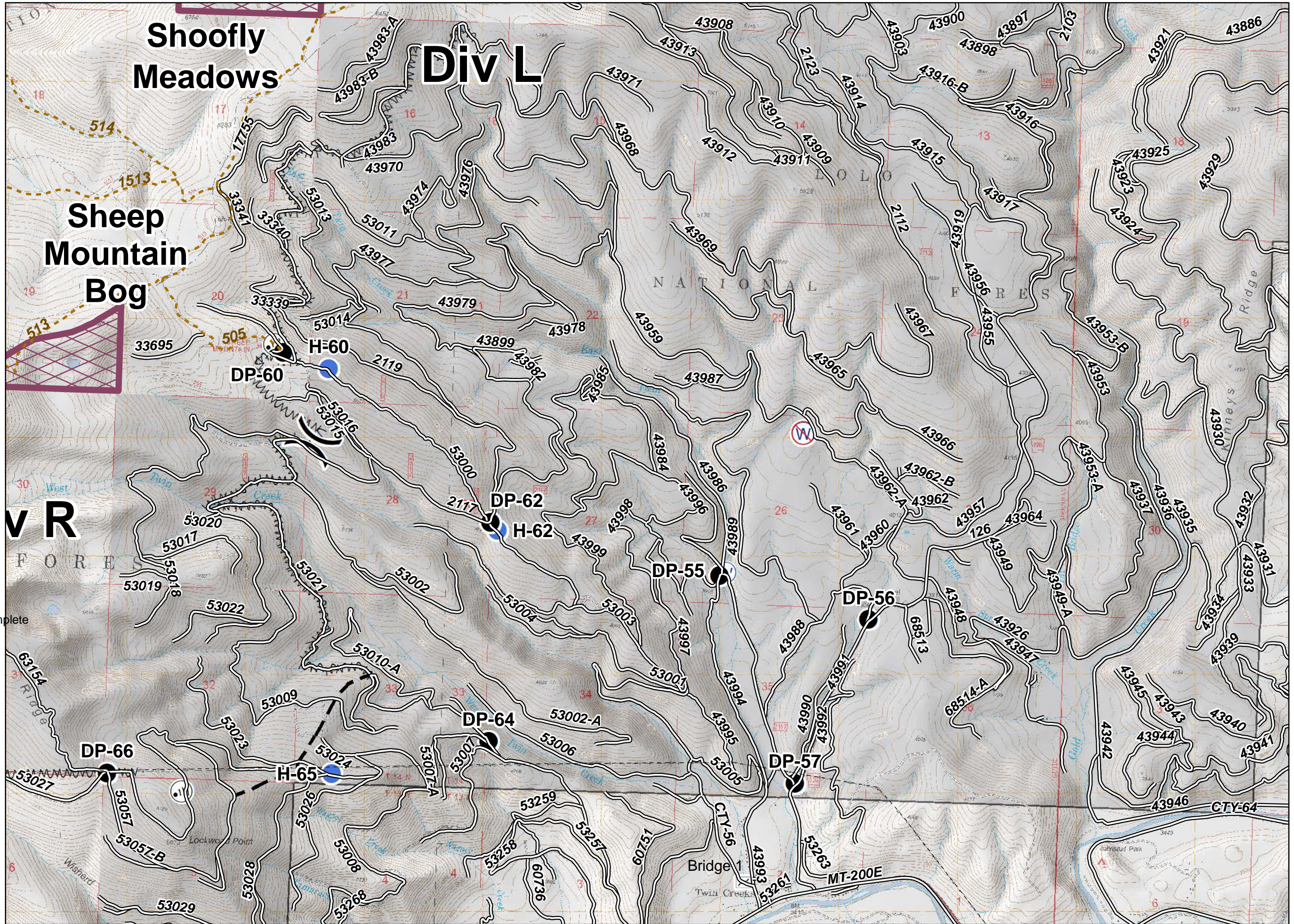
Remote Situation Unit

N
W E
S

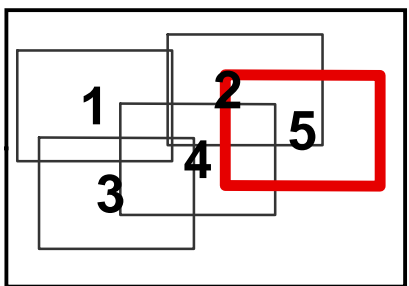
Miles

0 0.25 0.5





- Transmission Lines
- ▨ Values at Risk
- ▭ Bridge
- Drop Point
- Helispot
- ⦿ Internet Access
- ⊕ Water Source
- ⊖ Restricted Water Source
-)) Division Break
- NWN Fire Break Planned or Incomplete
- Planned Fire Line



A north arrow pointing upwards, labeled 'N', 'S', 'E', 'W'. Below it is a scale bar labeled 'Miles' with markings at 0, 0.25, and 0.5. To the left of the scale bar is a circular logo with 'NR' and a lightning bolt.