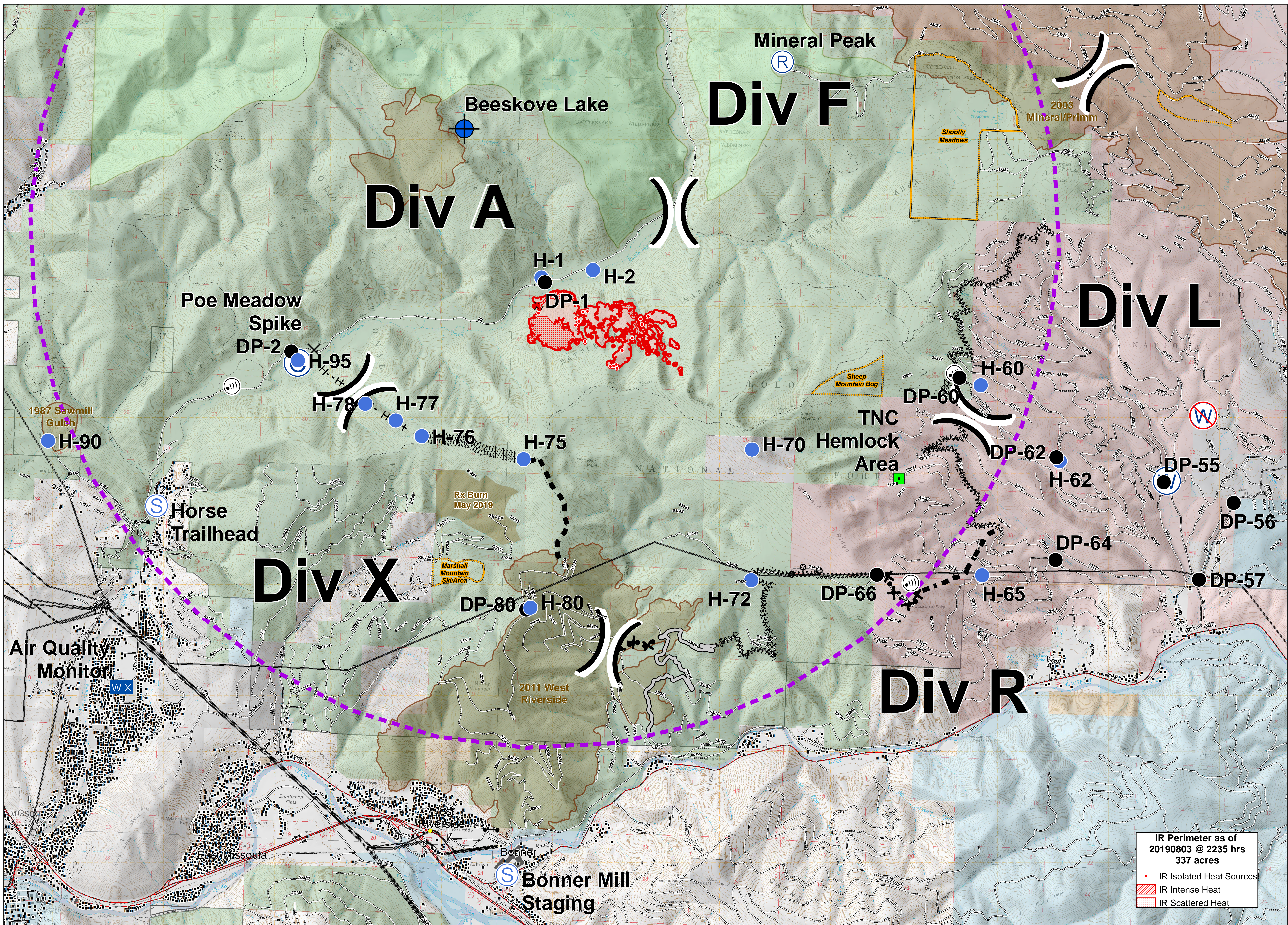


BEEKOVES



IR Perimeter as of 20190803 @ 2235 hrs
337 acres

- IR Isolated Heat Sources
- IR Intense Heat
- ▨ IR Scattered Heat



Briefing
MT-LNF-001232
August 4, 2019

- | | | | | | | |
|--------------|---------------------|------------------------------|----------------------------------|---------------------------|---|------------------------------|
| Camp | Helispot | Water Source | Access or Improved Road | Other | Road - Light Duty - Unspecified Composition | Road - Light Duty - Gravel |
| Closure | Internet Access | Restricted Water Source | Completed Hand Line | Wildfire Perimeter | Road - Unimproved | Wilderness Areas |
| Dip Site | Landmark | Division Break | Line Break Completed | Values at Risk Structures | Trail | US Forest Service |
| Drop Point | Mobile Weather Unit | Uncontrolled Fire Edge | Proposed Dozer Line | Planned Fire Line | Footbridge | US Bureau of Land Management |
| Gate | Repeater | Temporary Flight Restriction | Fire Break Planned or Incomplete | Transmission Lines | Under/Overpass Space - Rd/R.R. | State of Montana |
| Staging Area | Staging Area | | Highway | Road - Light Duty - Dirt | Road - Light Duty - Paved | The Nature Conservancy |

