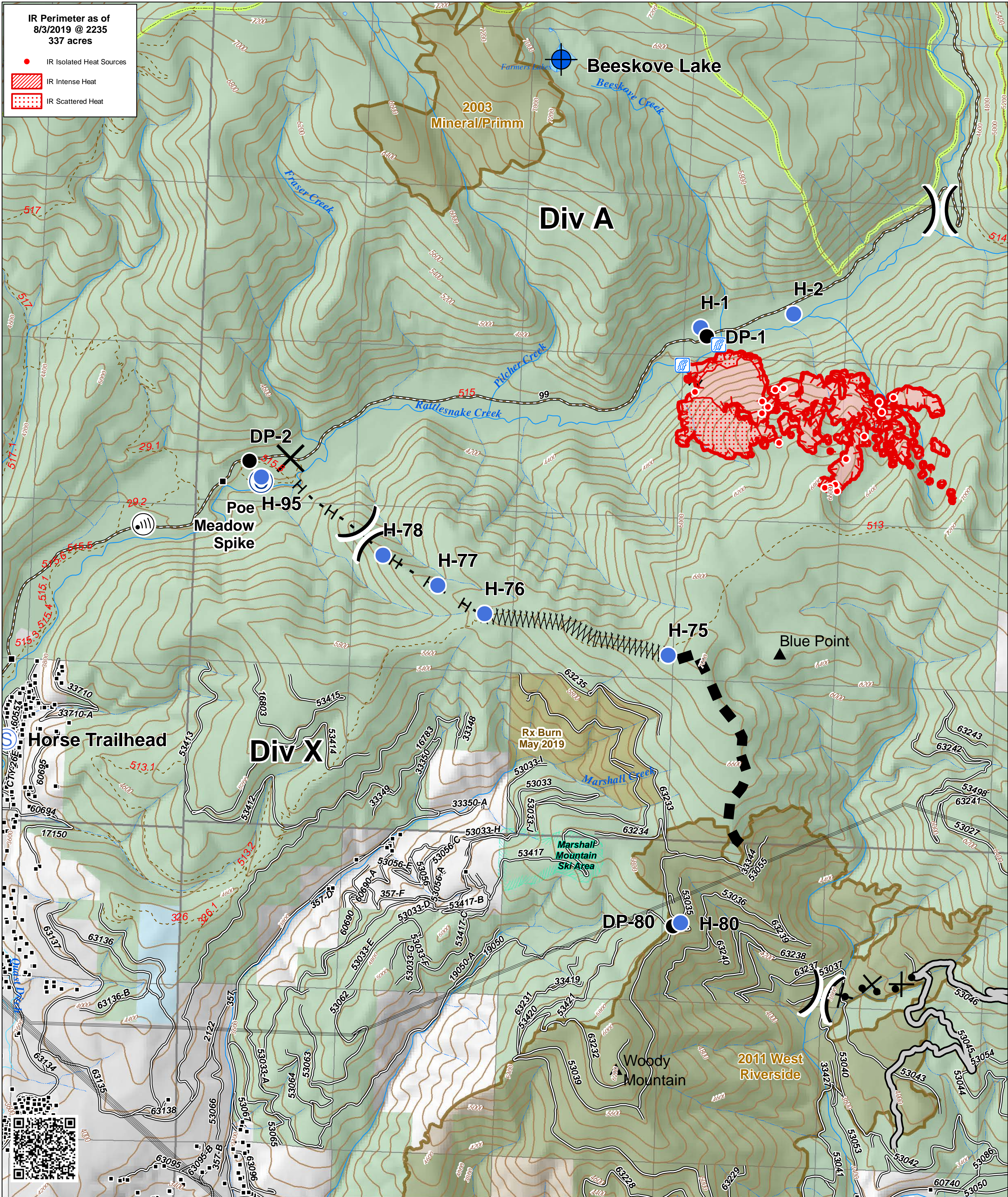



**IR Perimeter as of 8/3/2019 @ 2235**  
337 acres


- IR Isolated Heat Sources
- ▨ IR Intense Heat
- ▤ IR Scattered Heat





**Beeskove**  
Div A/X  
MT-LNF-001232  
August 4, 2019

Stream Crossing	Helispot	Uncontrolled Fire Edge	Proposed Dozer Line	Peaks	Ditch	State of Montana
Camp	Internet Access	Access or Improved Road	Planned Fire Line	Transmission Lines	Lake/Pond	Local Government
Closure	Staging Area	Completed Hand Line	Wildfire Daily Fire Perimeter	Trails	Recreation Area	Wilderness Areas
Dip Site	Division Break	Line Break Completed	Fire History	Roads	Fuel Treatments	US Forest Service
Drop Point			Structures	Perennial Stream	Intermittent Stream	



0 0.25 0.5 Miles