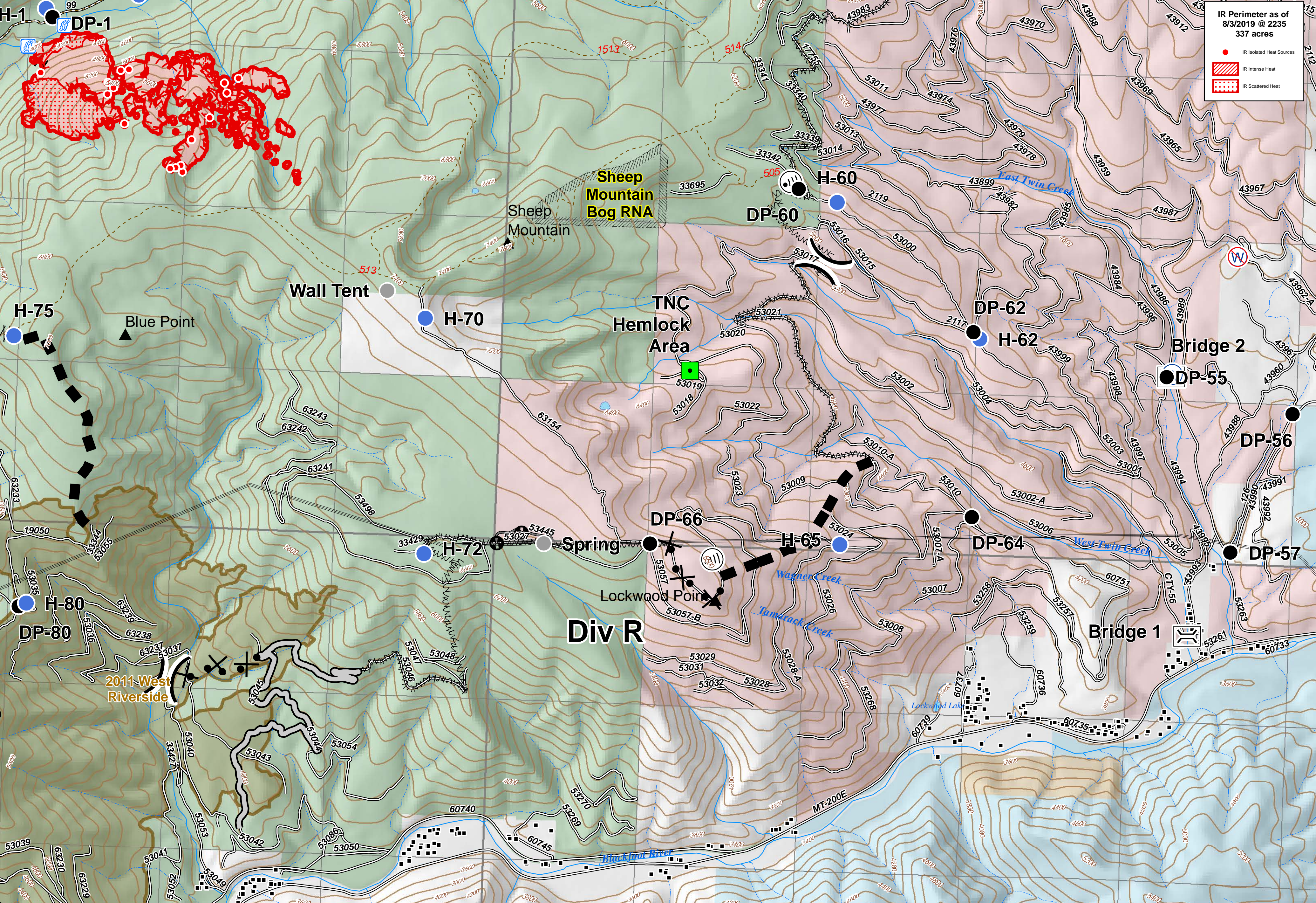


IR Perimeter as of 8/3/2019 @ 2235
337 acres

- IR Isolated Heat Sources
- IR Intense Heat
- IR Scattered Heat



Bridge	Landmark	Other	Completed Hand Line	Planned Fire Line	Transmission Lines	Wildfire Daily Fire Perimeter	State of Montana
Stream Crossing	Water Source	Division Break	Line Break Completed	Other	Trails	Fire History	Lake/Pond
Drop Point	Restricted Water Source	Uncontrolled Fire Edge	Proposed Dozer Line	Structures	Roads	Swamp/Marsh	The Nature Conservancy
Helispot	Internet Access	Access or Improved Road	Fire Break Planned or Incomplete	TNC Bridges	Perennial Stream	US Forest Service	US Bureau of Land Management
Peaks				Research Natural Area	Intermittent Stream		



Beeskove
Div R
MT-LNF-001232
August 4, 2019

0 0.25 0.5 Miles