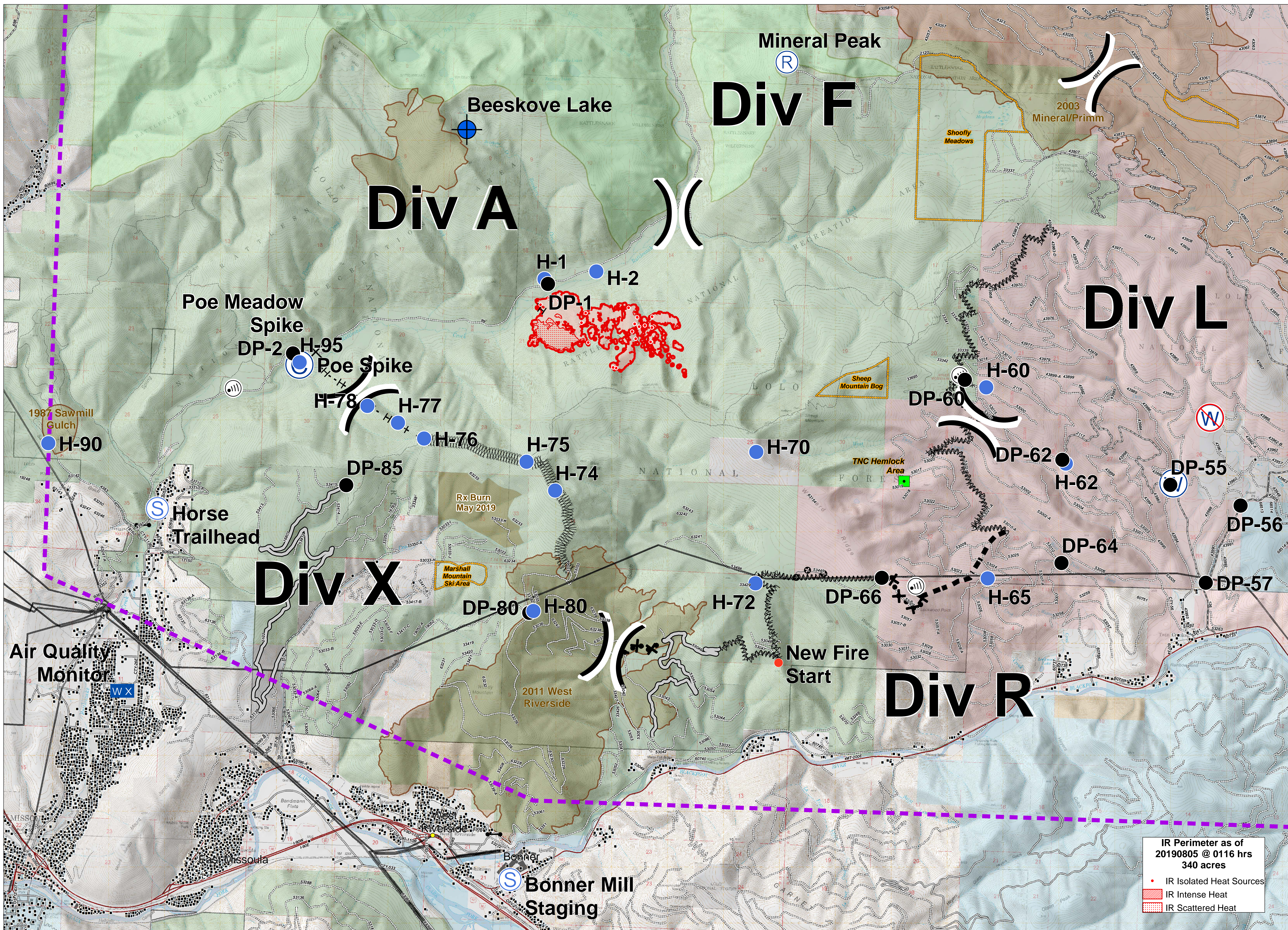


BEEKOVES



IR Perimeter as of 20190805 @ 0116 hrs
340 acres

- IR Isolated Heat Sources
- IR Intense Heat
- ▨ IR Scattered Heat



Briefing
MT-LNF-001232
August 5, 2019

- | | | | | | | | |
|------------|---------------------|-------------------------|------------------------------|----------------------------------|---|------------------------------|------------------------|
| Camp | Helispot | Staging Area | Uncontrolled Fire Edge | Fire Break Planned or Incomplete | Transmission Lines | Road - Light Duty - Dirt | The Nature Conservancy |
| Closure | Hot Spot | Water Source | Temporary Flight Restriction | Planned Fire Line | Highway | Road - Light Duty - Paved | Local Government |
| Dip Site | Internet Access | Restricted Water Source | Access or Improved Road | Other | Road - Light Duty - Unspecified Composition | Road - Light Duty - Gravel | Wilderness Areas |
| Drop Point | Landmark | Completed Hand Line | Line Break Completed | Wildfire Perimeter | Road - Unimproved | Trail | US Forest Service |
| Gate | Mobile Weather Unit | Proposed Dozer Line | Fire History | Values at Risk | Footbridge | US Bureau of Land Management | State of Montana |
| | Repeater | Division Break | Structures | Under/Overpass Space - Rd/R.R. | | | |

