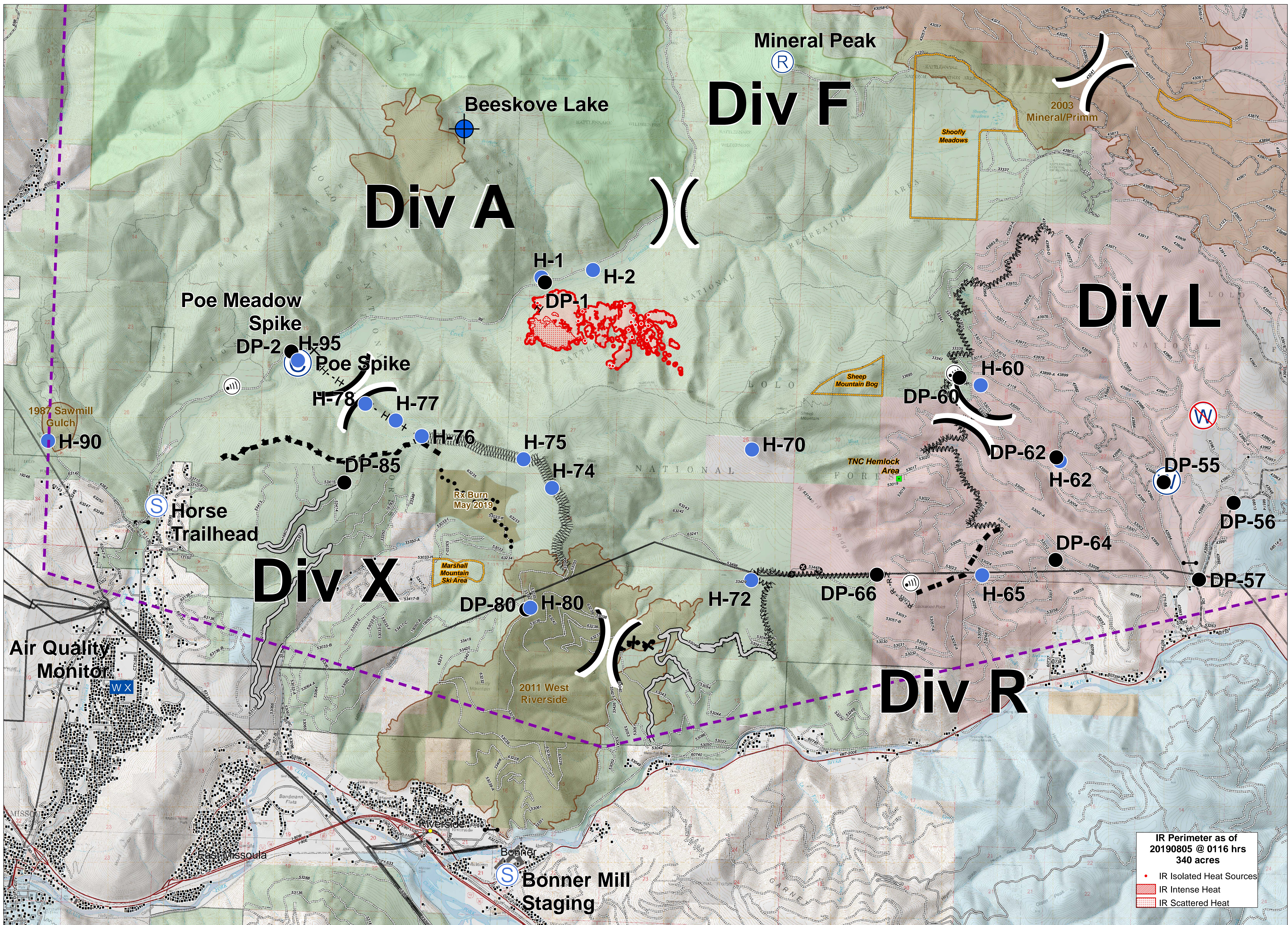


# BEEKOVES



**Briefing**  
 MT-LNF-001232  
 August 6, 2019

|            |                     |                         |                              |                                  |                    |   |                              |
|------------|---------------------|-------------------------|------------------------------|----------------------------------|--------------------|---|------------------------------|
| 9_4040     | Gate                | Repeater                | Division Break               | R - R - Road as Completed Line   | Other              | Road - Light Duty - Unspecified Composition | Road - Light Duty - Gravel   |
| Camp       | Helispot            | Staging Area            | Uncontrolled Fire Edge       | Line Break Completed             | Wildfire Perimeter | Road - Unimproved                           | Wilderness Areas             |
| Closure    | Hot Spot            | Water Source            | Temporary Flight Restriction | Proposed Dozer Line              | Fire History       | Trail                                       | US Forest Service            |
| Dip Site   | Internet Access     | Restricted Water Source | Access or Improved Road      | Fire Break Planned or Incomplete | Values at Risk     | Footbridge                                  | US Bureau of Land Management |
| Drop Point | Landmark            |                         | Completed Hand Line          | Planned Fire Line                | Structures         | Under/Overpass Space -Rd/R.R.               | State of Montana             |
|            | Mobile Weather Unit |                         |                              | Planned Secondary Line           | Transmission Lines | Road - Light Duty - Dirt                    | The Nature Conservancy       |
|            |                     |                         |                              |                                  | Highway            | Road - Light Duty - Paved                   | Local Government             |

