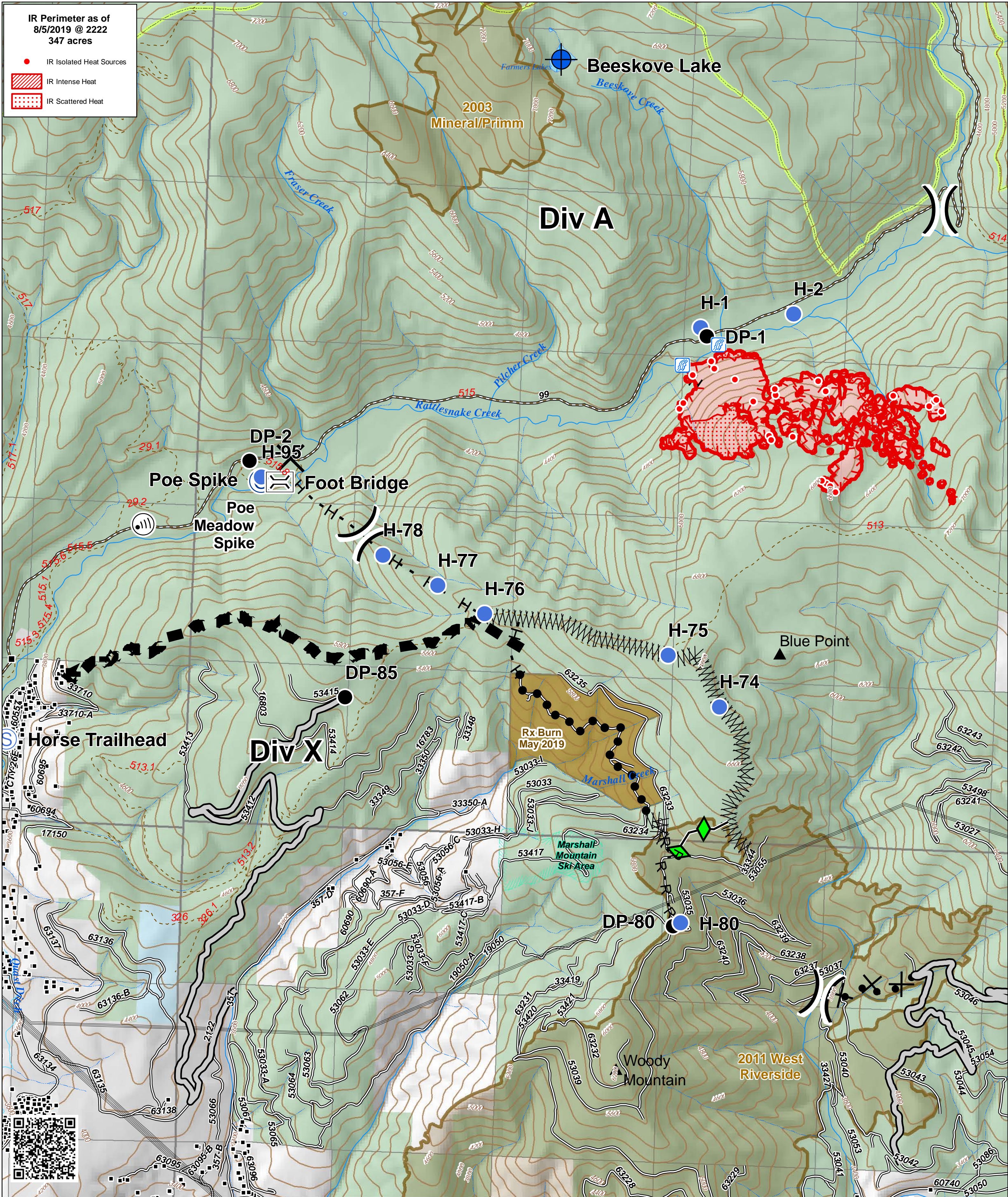


**IR Perimeter as of 8/5/2019 @ 2222**  
347 acres

- IR Isolated Heat Sources
- ▨ IR Intense Heat
- ▤ IR Scattered Heat



**Beeskove**  
Div A/X  
MT-LNF-001232  
August 6, 2019

Bridge	Drop Point	Uncontrolled Fire Edge	Completed Plow Line	Fire History	Intermittent Stream	State of Montana
Stream Crossing	Helispot	Access or Improved Road	Proposed Dozer Line	Structures	Ditch	Local Government
Camp	Internet Access	Completed Hand Line	Planned Fire Line	Peaks	Lake/Pond	
Closure	Staging Area	Road as Completed Line	Planned Secondary Line	Transmission Lines	Recreation Area	Wilderness Areas
Dip Site	Division Break	Line Break Completed	Wildfire Daily Fire Perimeter	Trails	Roads	Fuel Treatments
				Perennial Stream	US Forest Service	

