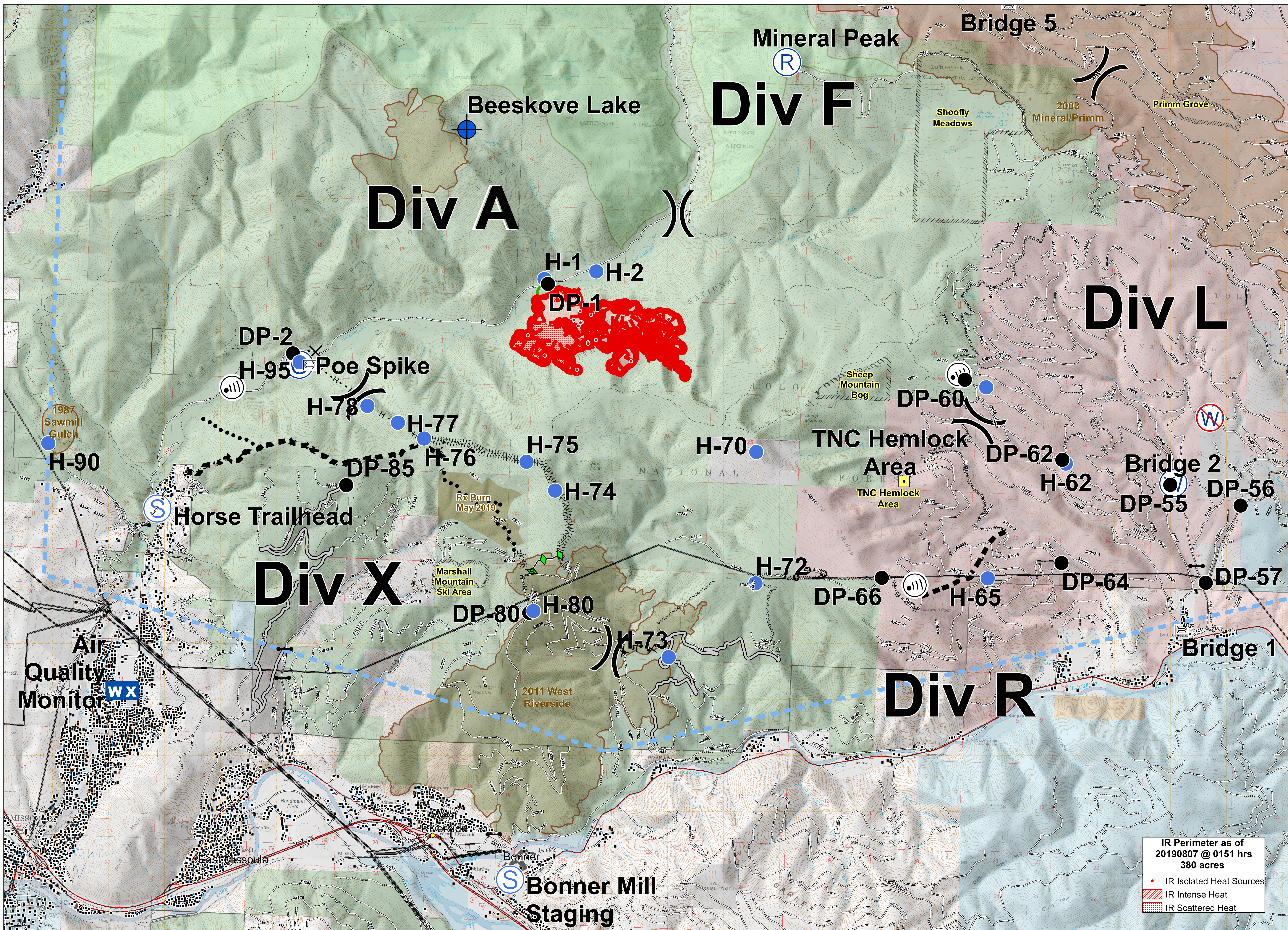


# BEEKOVES



IR Perimeter as of 20190807 @ 0151 hrs 380 acres

- IR Isolated Heat Sources
- IR Intense Heat
- ▨ IR Scattered Heat



**Briefing**  
 MT-LNF-001232  
 August 7, 2019

- |  |  |   |  |   |   |   |   |
|--|--|---|--|---|---|---|---|
| <ul style="list-style-type: none"> <li>Uncontrolled Fire Edge</li> <li>Temporary Flight Restriction</li> <li>Access or Improved Road</li> <li>Completed Hand Line</li> <li>Road as Completed Line</li> <li>Line Break Completed</li> </ul> | <ul style="list-style-type: none"> <li>Completed Plow Line</li> <li>Proposed Dozer Line</li> <li>Fire Break Planned or Incomplete</li> <li>Planned Fire Line</li> <li>Planned Secondary Line</li> <li>Other</li> </ul> | <ul style="list-style-type: none"> <li>Camp</li> <li>Closure</li> <li>Dip Site</li> <li>Drop Point</li> <li>Gate</li> </ul> | <ul style="list-style-type: none"> <li>Helispot</li> <li>Internet Access</li> <li>Mobile Weather Unit</li> <li>Repeater</li> <li>Staging Area</li> </ul> | <ul style="list-style-type: none"> <li>Water Source</li> <li>Restricted Water Source</li> <li>Division Break</li> <li>Wildfire Perimeter</li> </ul> | <ul style="list-style-type: none"> <li>Landmark</li> <li>Structures</li> <li>Transmission Lines</li> <li>Road - Light Duty - Unspecified Composition</li> <li>Road - Unimproved</li> <li>Trail</li> </ul> | <ul style="list-style-type: none"> <li>Footbridge</li> <li>Under/Overpass Space - Rd/R.R.</li> <li>Road - Light Duty - Dirt</li> <li>Road - Light Duty - Paved</li> <li>Road - Light Duty - Gravel</li> <li>Fire History</li> <li>Wilderness Areas</li> </ul> | <ul style="list-style-type: none"> <li>Special Resource Areas</li> <li>US Forest Service</li> <li>US Bureau of Land Management</li> <li>State of Montana</li> <li>The Nature Conservancy</li> <li>Local Government</li> </ul> |
|--|--|---|--|---|---|---|---|

