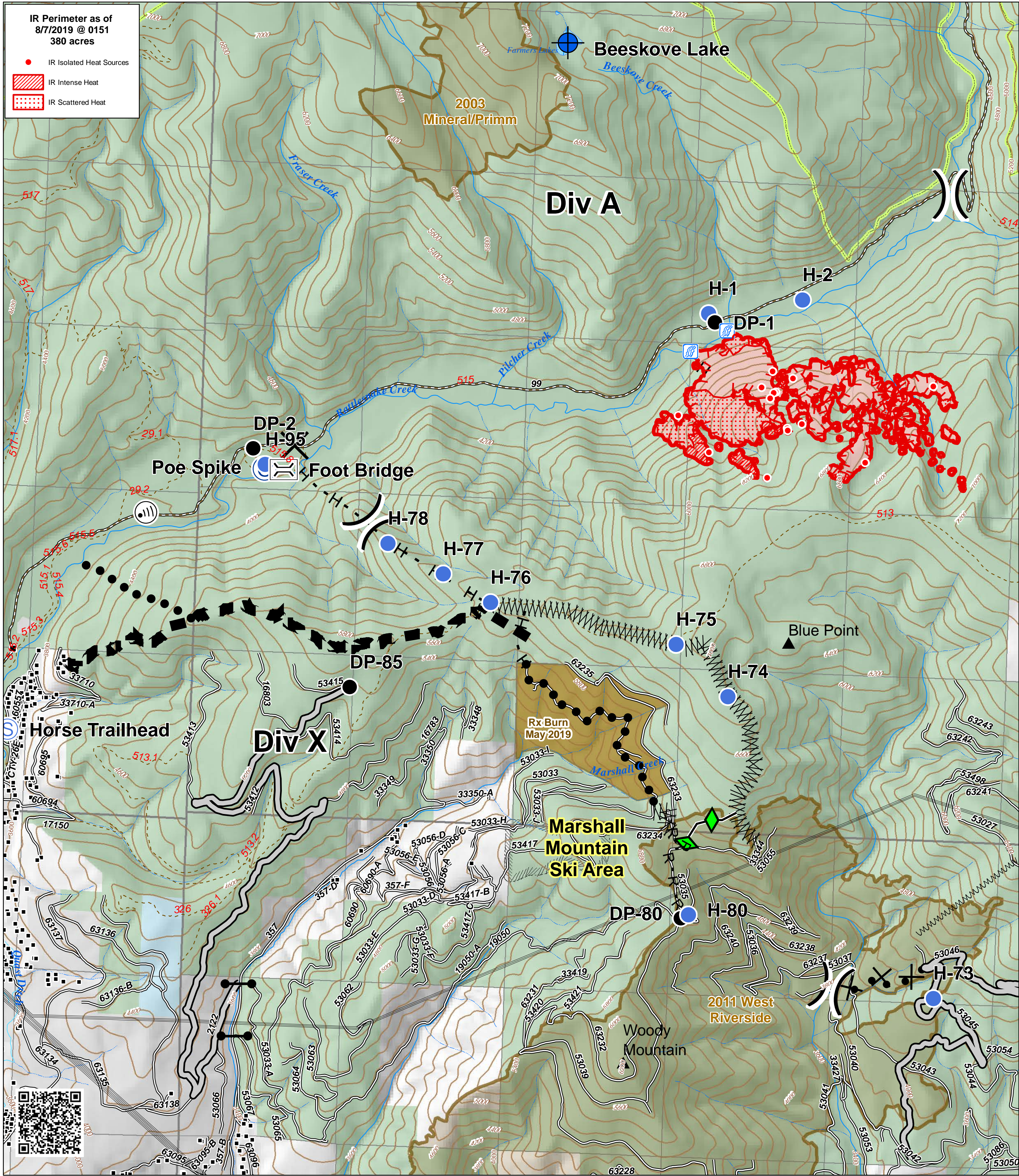


**IR Perimeter as of 8/7/2019 @ 0151**  
380 acres

- IR Isolated Heat Sources
- ▨ IR Intense Heat
- ▤ IR Scattered Heat



Bridge	Gate	Access or Improved Road	Proposed Dozer Line	Transmission Lines	Special Resource Areas
Stream Crossing	Helispot	Completed Hand Line	Fire Break Planned or Incomplete	Trails	Fuel Treatments
Camp	Internet Access	R-R Road as Completed Line	Planned Fire Line	Roads	US Forest Service
Closure	Staging Area	Line Break Completed	Planned Secondary Line	Perennial Stream	State of Montana
Dip Site	Division Break	Completed Plow Line	Wildfire Daily Fire Perimeter	Intermittent Stream	Local Government
Drop Point	Uncontrolled Fire Edge	Peaks	Structures	Ditch	Fire History
				Wilderness Areas	

**Beeskove**  
Div A/X  
MT-LNF-001232  
August 7, 2019

0 0.25 0.5 Miles