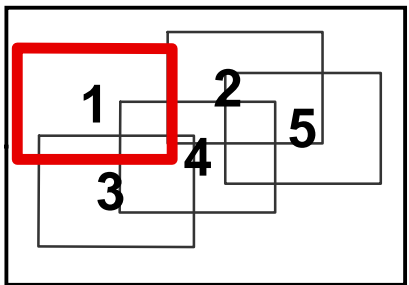


**Beeskove  
MTLNF001232**

- Bridge
- Camp
- Closure
- Dip Site
- Drop Point
- Gate
- Helispot
- Internet Access
- Repair Point
- Road Repair
- Staging Area
- Division Break

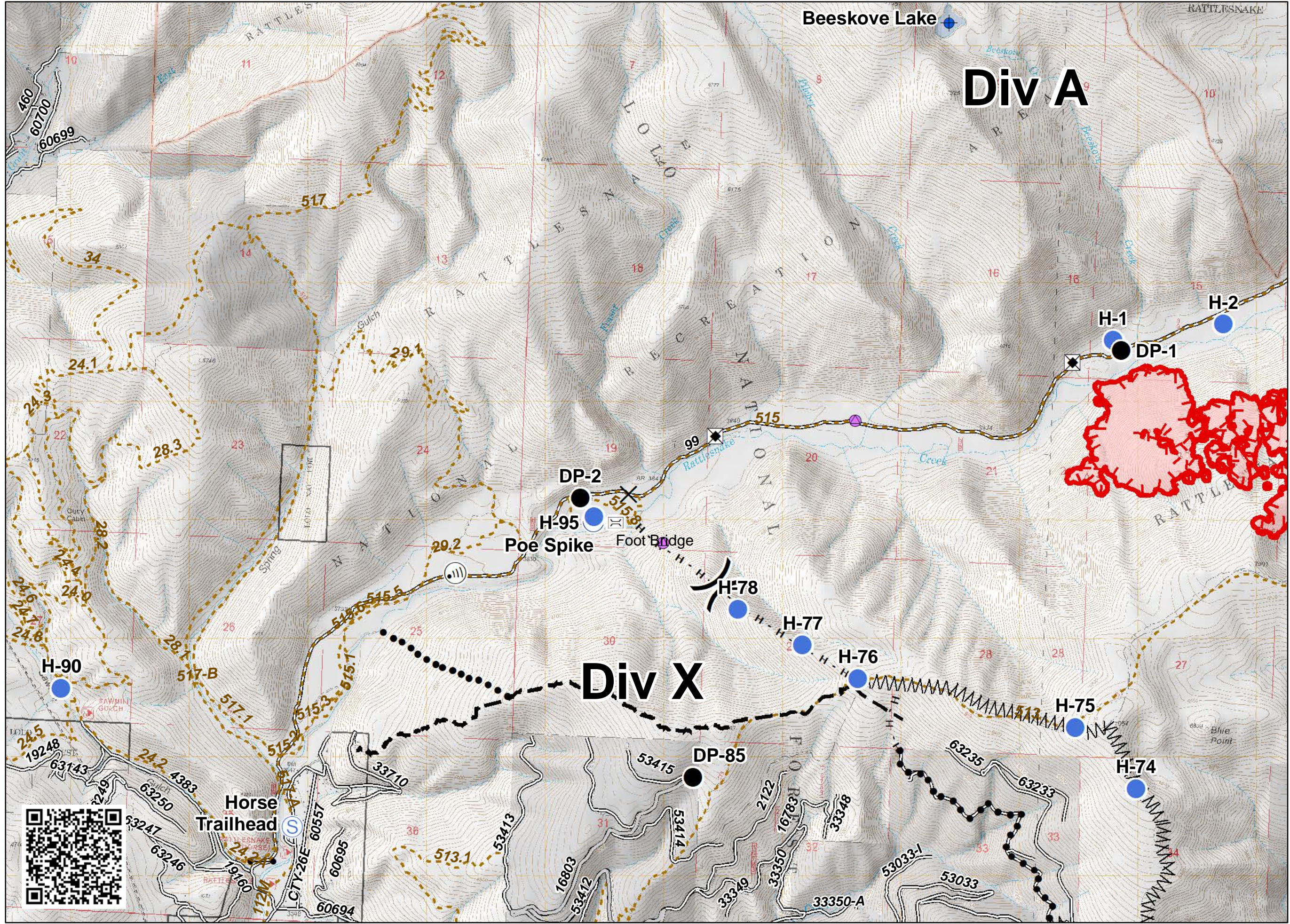
- Uncontrolled Fire Edge
- Completed Hand Line
- Access or Improved Road
- Line Break Completed
- Planned Fire Line
- Planned Secondary Line
- Wildfire Daily Fire Perimeter
- Transmission Lines



Remote Situation Unit  
NR

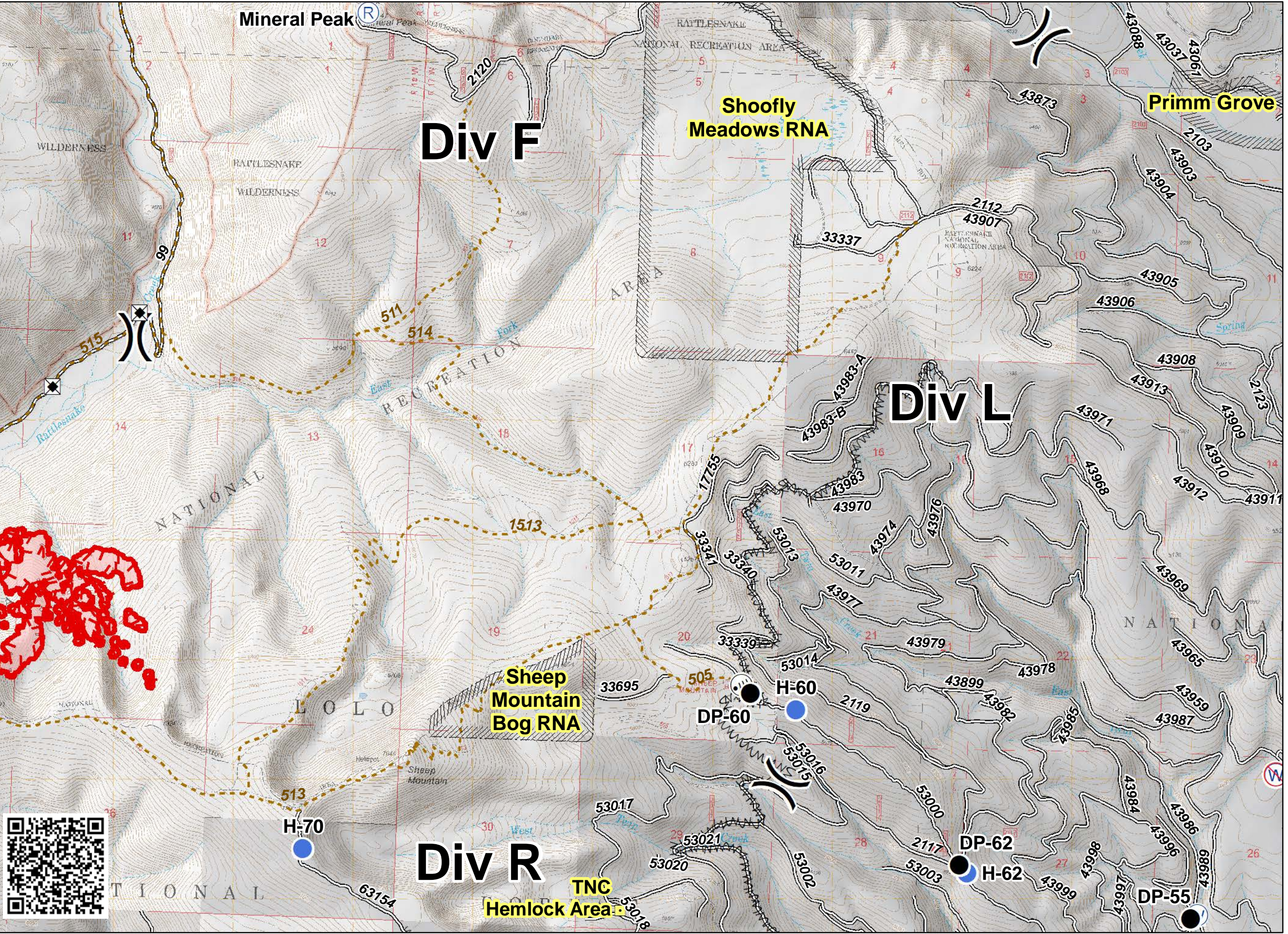
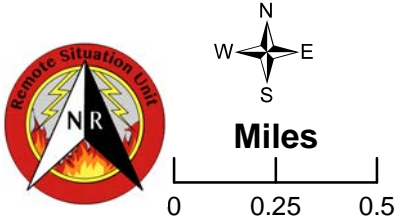
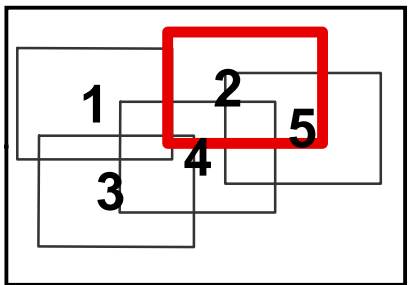
Miles

0 0.25 0.5


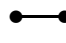






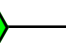




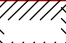
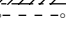



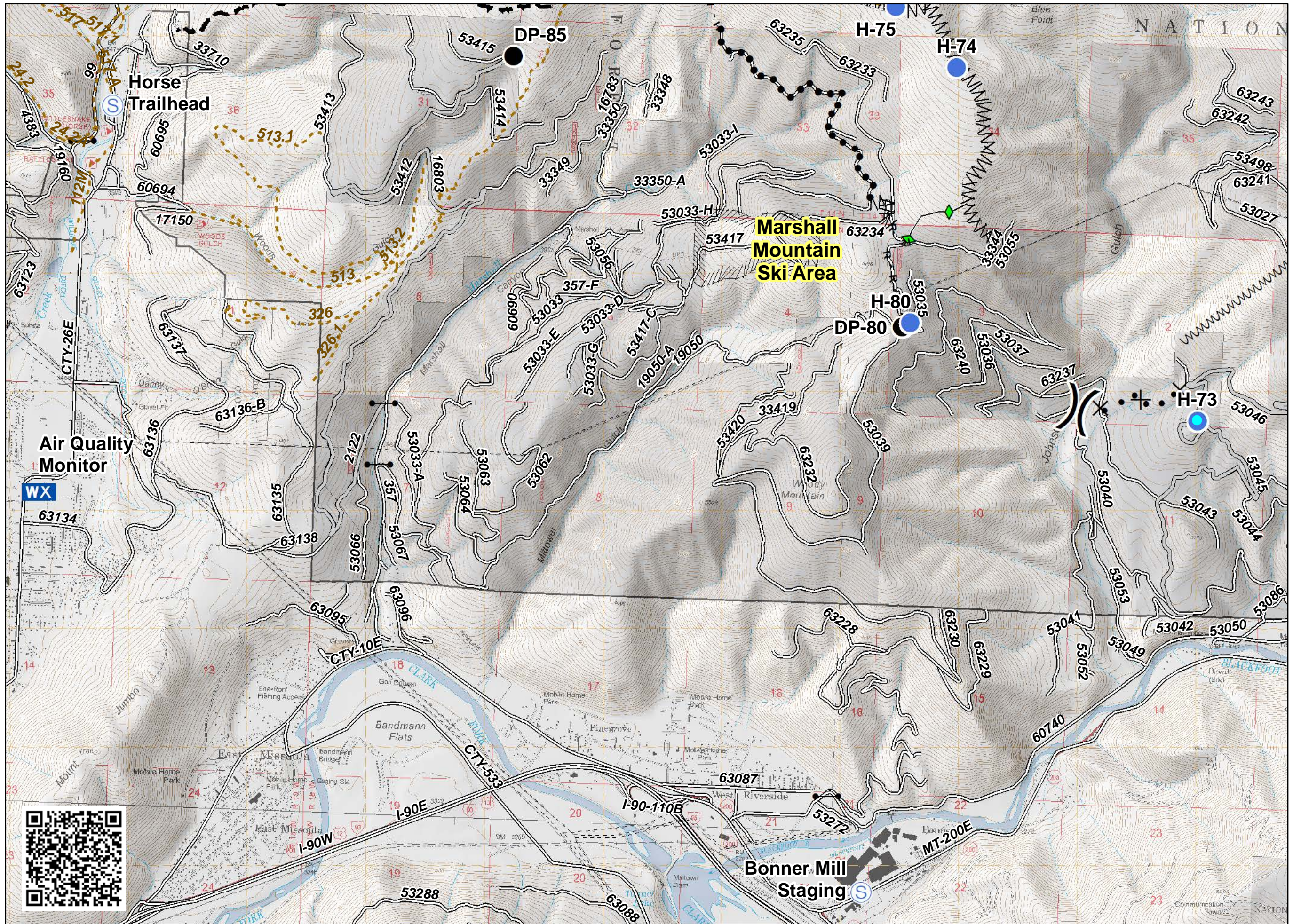
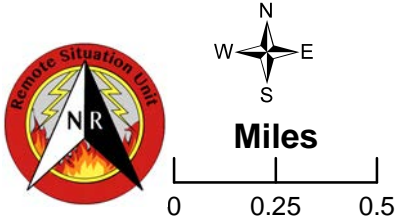
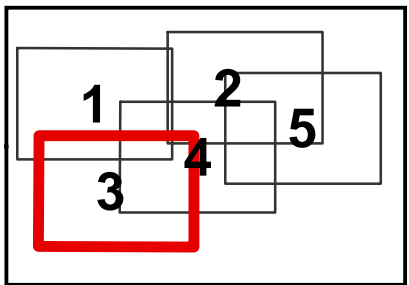


- Bridge
- Drop Point
- Helispot
- Internet Access
- Landmark
- Repeater
- Road Repair
- Water Source
- Restricted Water Source
- Division Break
- Uncontrolled Fire Edge
- Fire Break
- Wildfire Daily Fire Perimeter
- Special Resource Areas





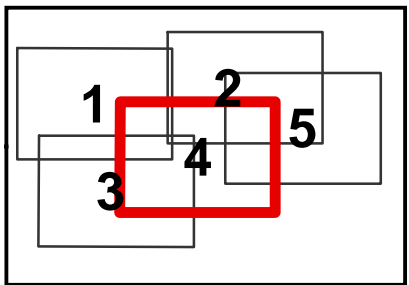
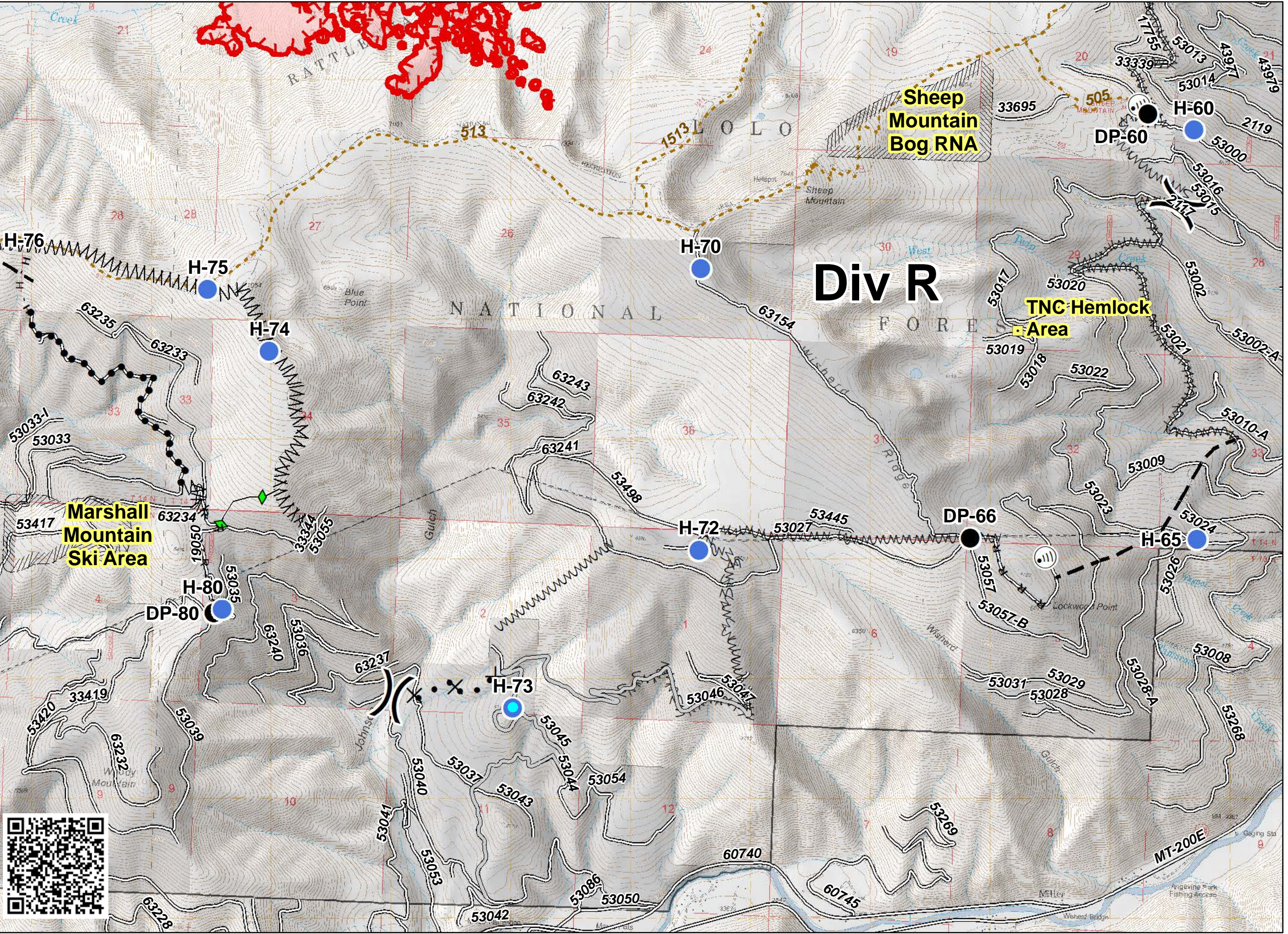
-  Drop
-  Gate
-  Helispot
-  Mobile Weather Unit
-  Staging Area
-  Division Break
- H - H Completed Hand Line
- R - R Road as Completed Line
-  Access or Improved Road
-  Line Break Completed
-  Completed Plow Line
-  Proposed Dozer Line
-  Fire Break
-  Planned Fire Line
-  Planned Secondary Line
-  Wildfire Daily Fire Perimeter
-  Special Resource Areas
-  Transmission Lines












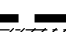
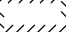
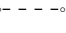


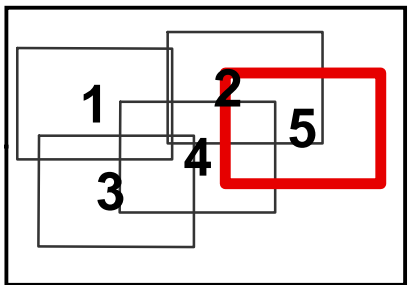
- Drop Point 4
- Helispot
- Ⓜ Internet Access
- Landmark
- ) ( Division Break

- Uncontrolled Fire Edge
- H - H Completed Hand Line
- R - R Road as Completed Line
- Access or Improved Road
- ⌵ Line Break Completed
- ◆ Completed Plow Line
- ⊗ Proposed Dozer Line
- ⌵ Fire Break
- Planned Fire Line
- Planned Secondary Line
- ▨ Wildfire Daily Fire Perimeter
- ▨ Special Resource Areas
- Transmission Lines



-  Bridge
-  Drop Point
-  Gate
-  Helispot
-  Internet Access
-  Landmark
-  Water Source
-  Restricted Water Source
-  Division Break
- R - R Road as Completed Line
- MWM Fire Break
-  Planned Fire Line
-  Special Resource Areas
-  Transmission Lines



0 0.25 0.5  
 Miles

