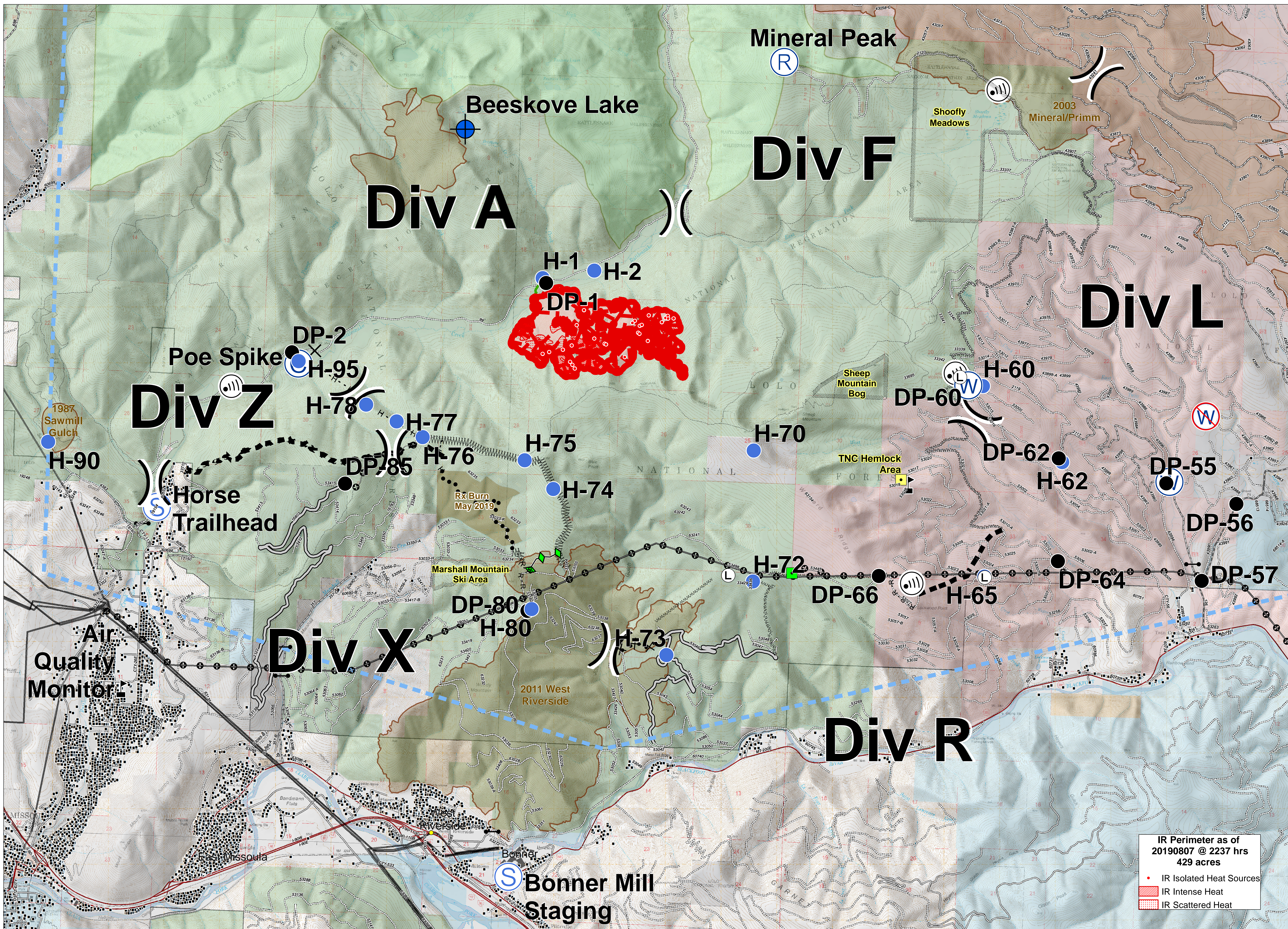


BEESEKOVES



Briefing

MT-LNF-001232
August 8, 2019

- Landing or Log Deck
- Camp
- Closure
- Dip Site
- Drop Point
- Gate
- Helispot
- Internet Access
- Repeater
- Staging Area
- Water Source
- Restricted Water Source
- Value at Risk
- Division Break

- Uncontrolled Fire Edge
- Temporary Flight Restriction
- Access or Improved Road
- Completed Hand Line
- Road as Completed Line
- Line Break Completed
- Completed Plow Line
- Proposed Dozer Line
- Fire Break Planned or Incomplete
- Planned Fire Line
- Planned Secondary Line
- Other

- Special Resource Areas
- Landmark
- Wildfire Perimeter
- Structures
- Transmission Lines
- Highway
- Road - Light Duty - Unspecified Composition
- Road - Unimproved
- Trail
- Footbridge
- Under/Overpass Space - Rd/R.R.
- Road - Light Duty - Dirt
- Road - Light Duty - Paved
- Road - Light Duty - Gravel

- Fire History
- Wilderness Areas
- US Forest Service
- US Bureau of Land Management
- State of Montana
- The Nature Conservancy
- Local Government

