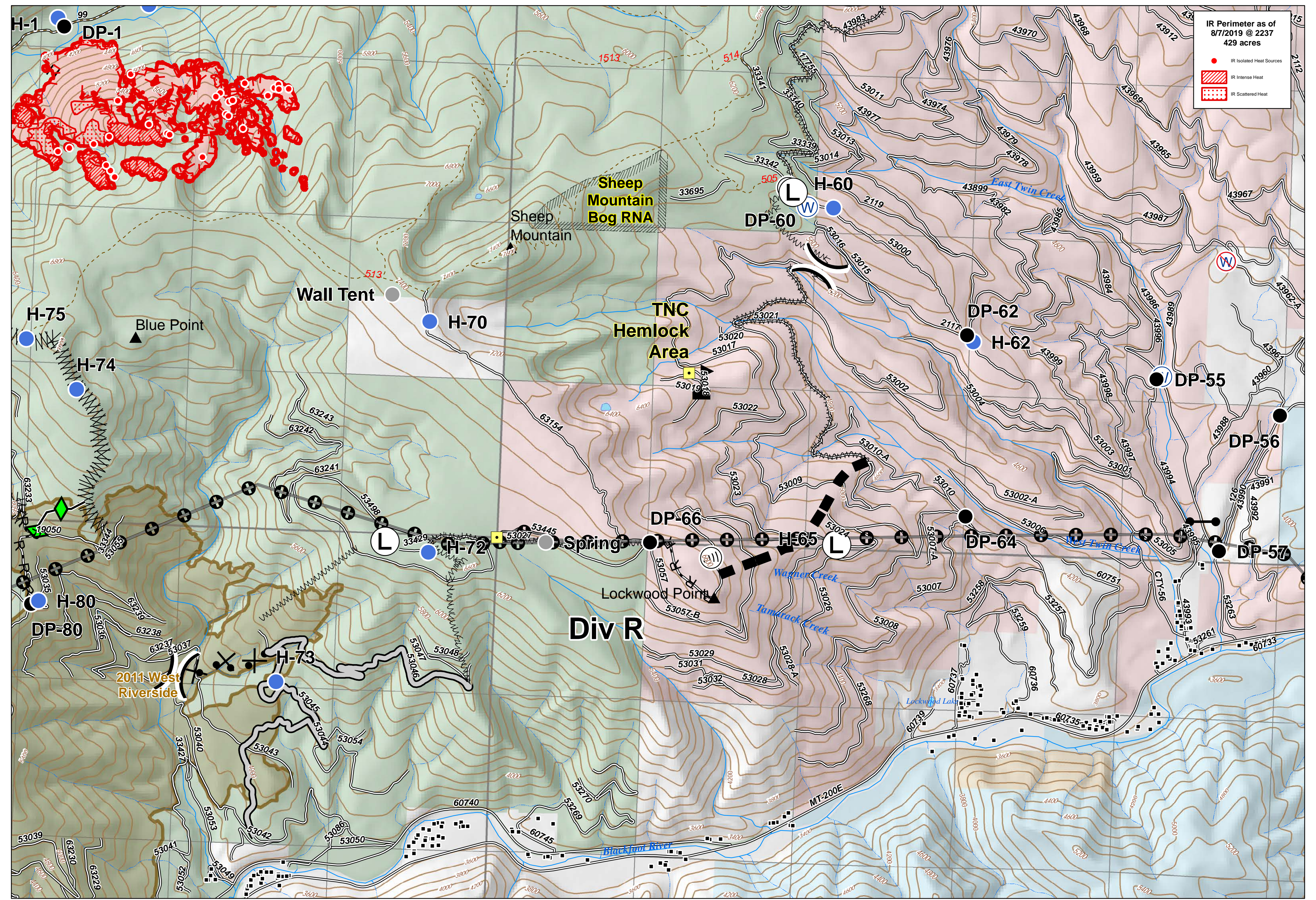


IR Perimeter as of 8/7/2019 @ 2237
429 acres

- IR Isolated Heat Sources
- IR Intense Heat
- IR Scattered Heat



Beeskove
Div R
MT-LNF-001232
August 8, 2019

- | | | | | | | | | | |
|---------------------|-------------------------|-------------------------|-------------------------|------------------------|----------------------------------|-------------------|---------------------|-------------------------------|------------------------------|
| Landing or Log Deck | Internet Access | Restricted Water Source | Other | Completed Hand Line | Completed Plow Line | Planned Fire Line | Transmission Lines | Research Natural Area | US Forest Service |
| Drop Point | Landmark | Water Source | Division Break | Road as Completed Line | Proposed Dozer Line | Other | Trails | Wildfire Daily Fire Perimeter | US Bureau of Land Management |
| Gate | Water Source | Value at Risk | Uncontrolled Fire Edge | Line Break Completed | Fire Break Planned or Incomplete | Structures | Roads | Fire History | State of Montana |
| Helispot | Access or Improved Road | Access or Improved Road | Access or Improved Road | Line Break Completed | Fire Break Planned or Incomplete | TNC Bridges | Perennial Stream | Lake/Pond | The Nature Conservancy |
| | | | | Line Break Completed | Fire Break Planned or Incomplete | Peaks | Intermittent Stream | Swamp/Marsh | |

