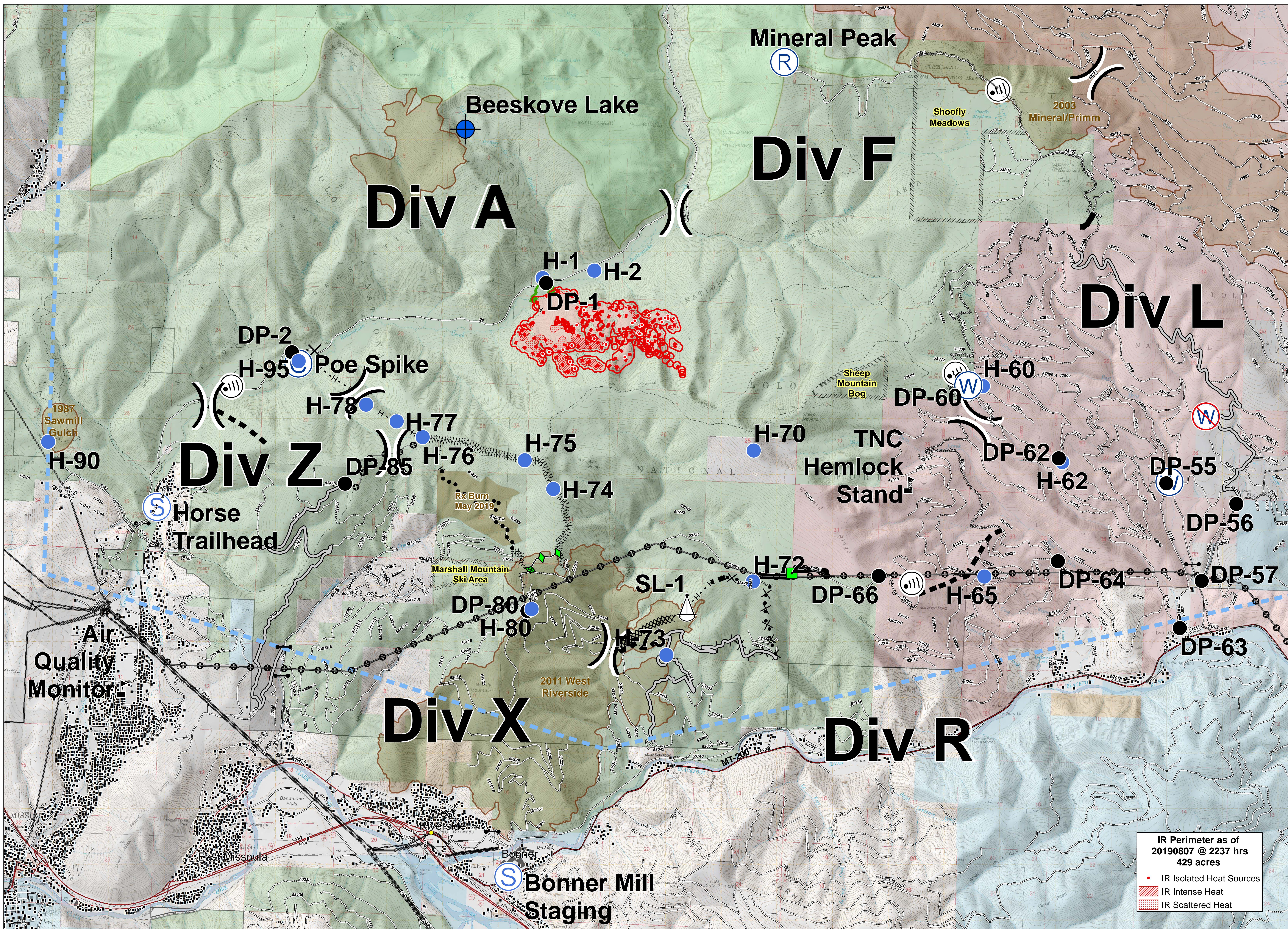


BEESEKOVES



IR Perimeter as of 20190807 @ 2237 hrs
429 acres

- IR Isolated Heat Sources
- IR Intense Heat
- IR Scattered Heat



Briefing
MT-LNF-001232
August 9, 2019

- | | | | | | | | | |
|-------------------------|-------------------|-----------------------------|--------------------------------|--------------------------------|------------------------------------|--------------------------|---------------------------------|--------------------------------|
| (L) Landing or Log Deck | ● Drop Point | ⚓ Sling Site | ⚠ Value at Risk | — Access or Improved Road | ◆ Completed Plow Line | ▭ Wildfire Perimeter | ⋯ Road - Unimproved | ▭ Fire History |
| (C) Camp | — Gate | ⚓ Sling Site |)) Division Break | — Completed Line | ✂ Proposed Dozer Line | ▭ Special Resource Areas | — Trail | ▭ Wilderness Areas |
| ✂ Closure | ● Helispot | (S) Staging Area | — Uncontrolled Fire Edge | ✂ Completed Dozer Line | — Fire Break Planned or Incomplete | ▭ Structures | — Footbridge | ▭ US Forest Service |
| ⚓ Dip Site | Ⓜ Internet Access | (W) Water Source | — Temporary Flight Restriction | — R - R Road as Completed Line | — Planned Fire Line | — Transmission Lines | — Road/Overpass Space - Rd/R.R. | ▭ US Bureau of Land Management |
| | (R) Repeater | (W) Water Source | | — Line Break Completed | ● Planned Secondary Line | — MT200 | — Road - Light Duty - Dirt | ▭ State of Montana |
| | | (W) Restricted Water Source | | | — Other | — Highway | — Road - Light Duty - Paved | ▭ The Nature Conservancy |
| | | | | | | — Road - Light Duty | — Road - Light Duty - Gravel | ▭ Local Government |

