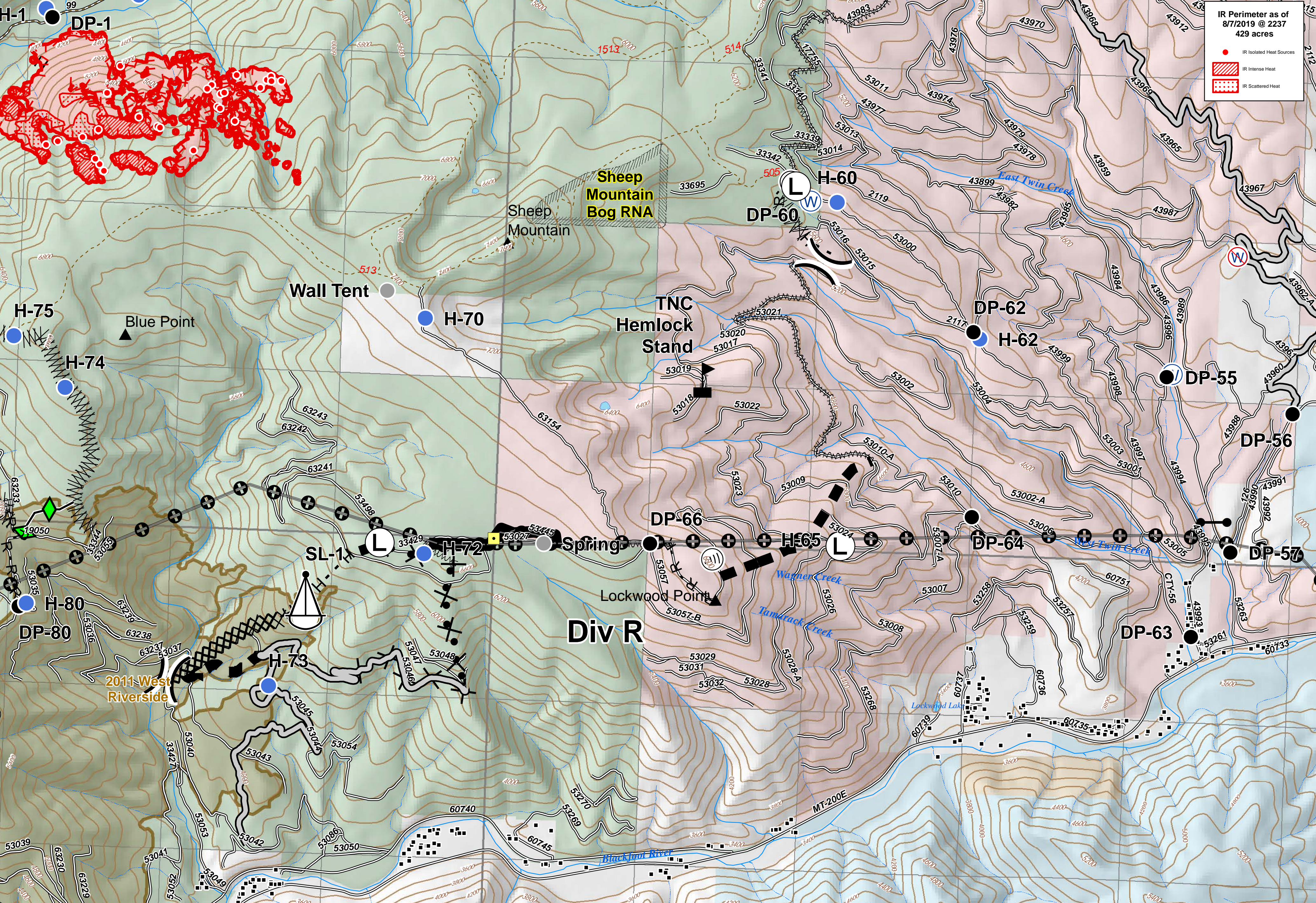



IR Perimeter as of 8/7/2019 @ 2237
429 acres

- IR Isolated Heat Sources
- IR Intense Heat
- IR Scattered Heat





Beeskov
Div R
MT-LNF-001232
August 9, 2019

Landing or Log Deck	Internet Access	Water Source	Other	Completed Line	R-R Road as Completed Line	Proposed Dozer Line	Structures	Roads	Fire History	State of Montana
Drop Point	Landmark	Restricted Water Source	Division Break	Completed Dozer Line	Line Break Completed	Fire Break Planned or Incomplete	TNC Bridges	Perennial Stream	Lake/Pond	The Nature Conservancy
Gate	Sling Site	Value at Risk	Uncontrolled Fire Edge	Completed Hand Line	Completed Plow Line	Planned Fire Line	Peaks	Intermittent Stream	Swamp/Marsh	US Forest Service
Helispot	Access or Improved Road	Access or Improved Road	Access or Improved Road	Access or Improved Road	Access or Improved Road	Access or Improved Road	Transmission Lines	Research Natural Area	Wildfire Daily Fire Perimeter	US Bureau of Land Management
							Trails	Wildfire Daily Fire Perimeter	Wildfire Daily Fire Perimeter	North Arrow and Scale bar (0, 0.25, 0.5 Miles)