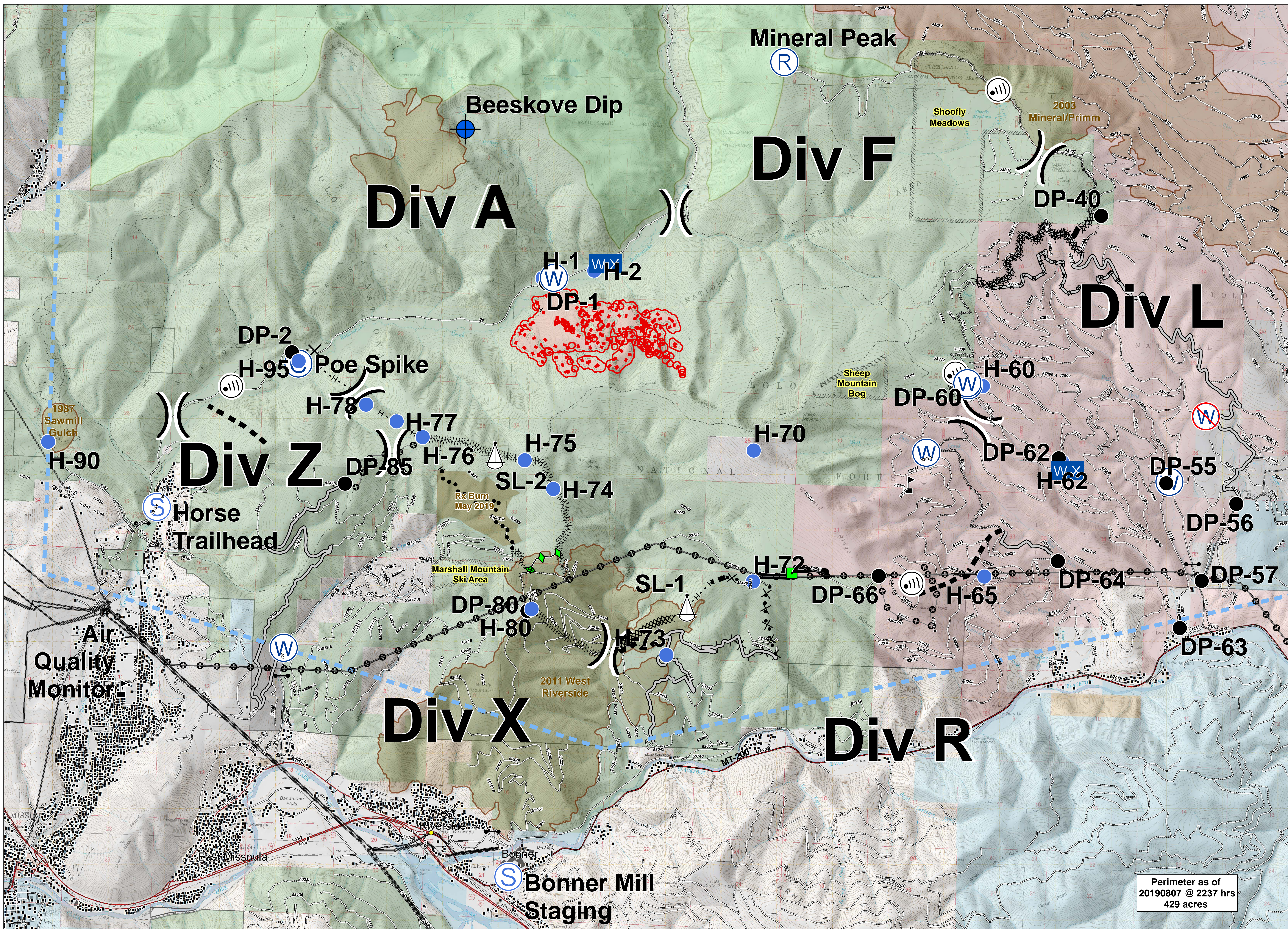


BEEKOVES



Perimeter as of
20190807 @ 2237 hrs
429 acres



Briefing
MT-LNF-001232
August 10, 2019

| | | | | | | | | |
|-------------------------|-------------------------|-----------------------------|--------------------------------|--------------------------------|------------------------------------|------------------------------|----------------------------------|--------------------------------|
| (L) Landing or Log Deck | ● Drop Point | ⚓ Sling Site | ⚠ Value at Risk | — Access or Improved Road | ◆ Completed Plow Line | ▭ Wildfire Perimeter | ⋯ Trail | ▭ Fire History |
| (C) Camp | — Gate | (S) Staging Area |) (Division Break | — Completed Line | ✂ Proposed Dozer Line | • Structures | — Footbridge | ▭ Wilderness Areas |
| ✕ Closure | ● Helispot | (W) Water Source | — Uncontrolled Fire Edge | ⊘ Completed Dozer Line | ⋯ Fire Break Planned or Incomplete | — Transmission Lines | — Under/Overpass Space - Rd/R.R. | ▭ US Forest Service |
| (I) Internet Access | (W) Mobile Weather Unit | (R) Restricted Water Source | — Temporary Flight Restriction | — Completed Hand Line | — Planned Fire Line | — MT200 | — Road - Light Duty - Dirt | ▭ US Bureau of Land Management |
| (D) Dip Site | (R) Repeater | | | R - R - Road as Completed Line | • Planned Secondary Line | — Highway | — Road - Light Duty - Paved | ▭ State of Montana |
| | | | | — Line Break Completed | ⊕ Other | — Road - Light Duty - Gravel | — Road - Light Duty - Gravel | ▭ The Nature Conservancy |
| | | | | | | — Road - Unimproved | ▭ Special Resource Areas | ▭ Local Government |

