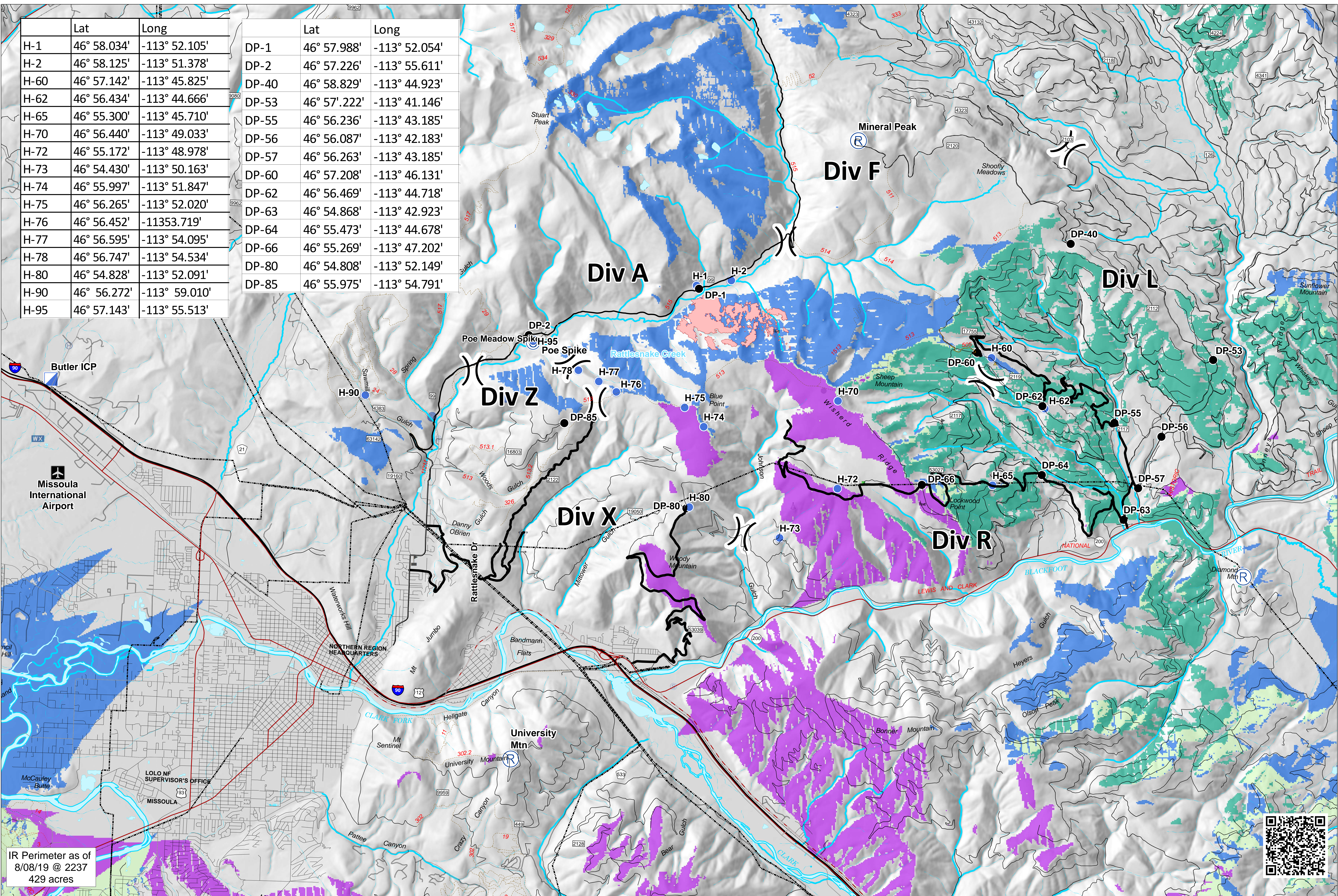



	Lat	Long
H-1	46° 58.034'	-113° 52.105'
H-2	46° 58.125'	-113° 51.378'
H-60	46° 57.142'	-113° 45.825'
H-62	46° 56.434'	-113° 44.666'
H-65	46° 55.300'	-113° 45.710'
H-70	46° 56.440'	-113° 49.033'
H-72	46° 55.172'	-113° 48.978'
H-73	46° 54.430'	-113° 50.163'
H-74	46° 55.997'	-113° 51.847'
H-75	46° 56.265'	-113° 52.020'
H-76	46° 56.452'	-113° 53.719'
H-77	46° 56.595'	-113° 54.095'
H-78	46° 56.747'	-113° 54.534'
H-80	46° 54.828'	-113° 52.091'
H-90	46° 56.272'	-113° 59.010'
H-95	46° 57.143'	-113° 55.513'

	Lat	Long
DP-1	46° 57.988'	-113° 52.054'
DP-2	46° 57.226'	-113° 55.611'
DP-40	46° 58.829'	-113° 44.923'
DP-53	46° 57.222'	-113° 41.146'
DP-55	46° 56.236'	-113° 43.185'
DP-56	46° 56.087'	-113° 42.183'
DP-57	46° 56.263'	-113° 43.185'
DP-60	46° 57.208'	-113° 46.131'
DP-62	46° 56.469'	-113° 44.718'
DP-63	46° 54.868'	-113° 42.923'
DP-64	46° 55.473'	-113° 44.678'
DP-66	46° 55.269'	-113° 47.202'
DP-80	46° 54.808'	-113° 52.149'
DP-85	46° 55.975'	-113° 54.791'



IR Perimeter as of 8/08/19 @ 2237 429 acres





Beeskove Communications
MT-LNF-001232
Aug 10, 2019

<ul style="list-style-type: none"> ■ Daily Fire Perimeter Division Break Camp Closure ● Dip Site ● Drop Point 	<ul style="list-style-type: none"> Gate Helibase ● Helispot Incident Command Post Internet Access ■ Landmark Mobile Weather Unit 	<ul style="list-style-type: none"> Repeater Safety Zone Sling Site Staging Area ● Water Source Restricted Water Source Value at Risk 	<ul style="list-style-type: none"> ● Other Airports HIGHWAY HIGHWAY - SECONDARY ROAD - LDR, PAVED ROAD - LDR, COMPOSITION UNSPECIFIED ROAD - UNIMPROVED DIRT 	<ul style="list-style-type: none"> TRAIL - NATL REC / SCENIC / HISTORIC TRAIL - MOTORIZED USE TRAIL - NON-MOTORIZED USE ROAD - URBAN AREAS R.R. STD GAUGE - SINGLE TRACK Routes to Points Transmission Lines 	<ul style="list-style-type: none"> roads Main_Roads <p>Repeater Viewshed</p> <ul style="list-style-type: none"> Comm 8 Comm 7 Overlap
--	--	--	---	--	--

0 0.5 1 Miles

