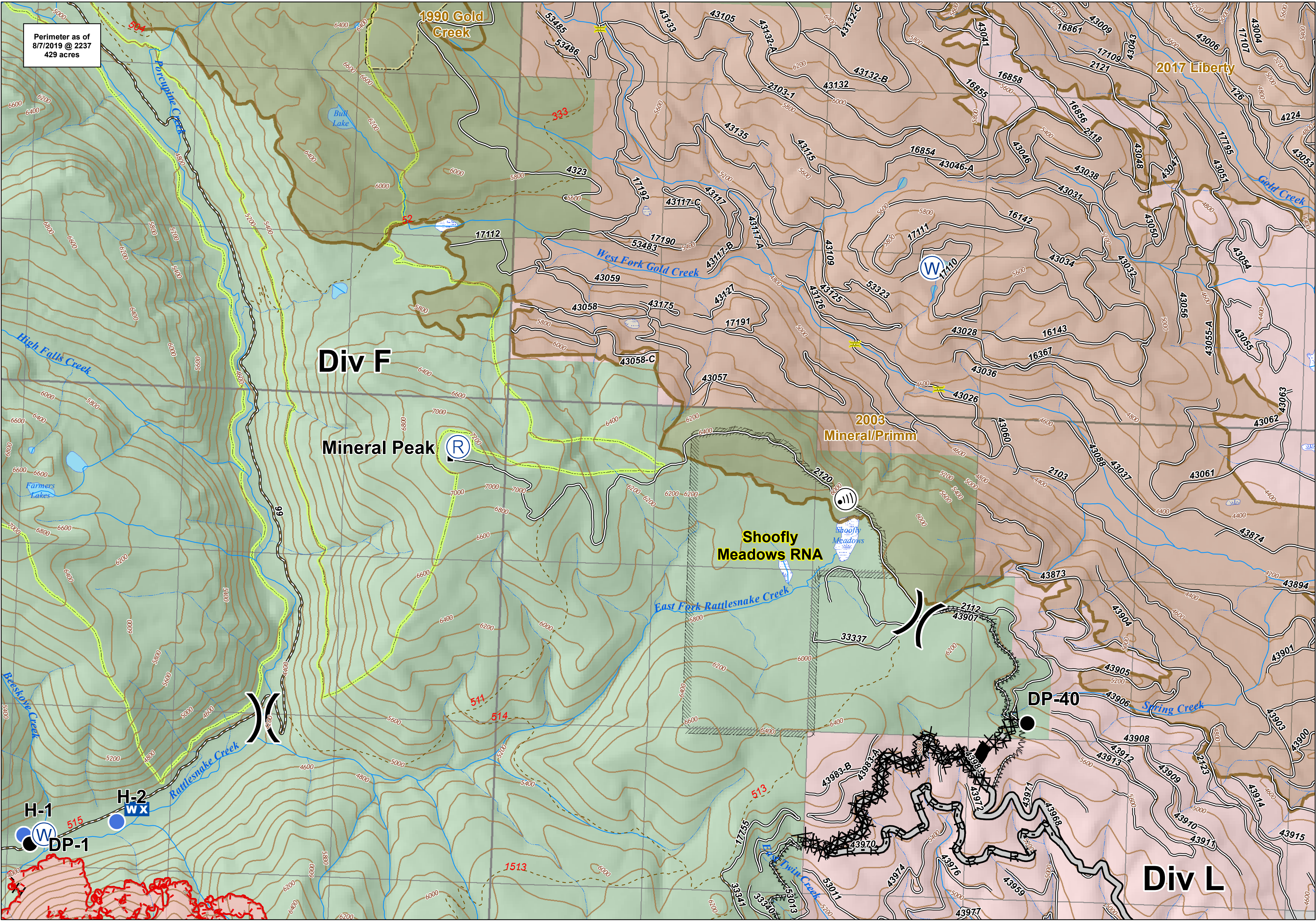


Perimeter as of  
8/7/2019 @ 2237  
429 acres



**Beeskove**  
**Div F**  
MT-LNF-001232  
August 10, 2019

● Drop Point	<b>WX</b> Mobile Weather Unit	<b>W</b> Water Source	— Uncontrolled Fire Edge	XXXXX Completed Dozer Line	⊗ Proposed Dozer Line	— TNC Bridges	— Roads	— Fire History	Swamp/Marsh	US Forest Service
● Helispot	<b>R</b> Repeater	<b>( )</b> Division Break	— Access or Improved Road	H - Completed Hand Line	W W W Fire Break Planned or Incomplete	— Peaks	— Perennial Stream	Roadless Area	Research Natural Area	The Nature Conservancy
<b>( )</b> Internet Access			— Completed Line	R - R Road as Completed Line	— Wildfire Daily Fire Perimeter	- - - Trails	- - - Intermittent Stream	Lake/Pond	Wilderness Area	

0 0.25 0.5 Miles