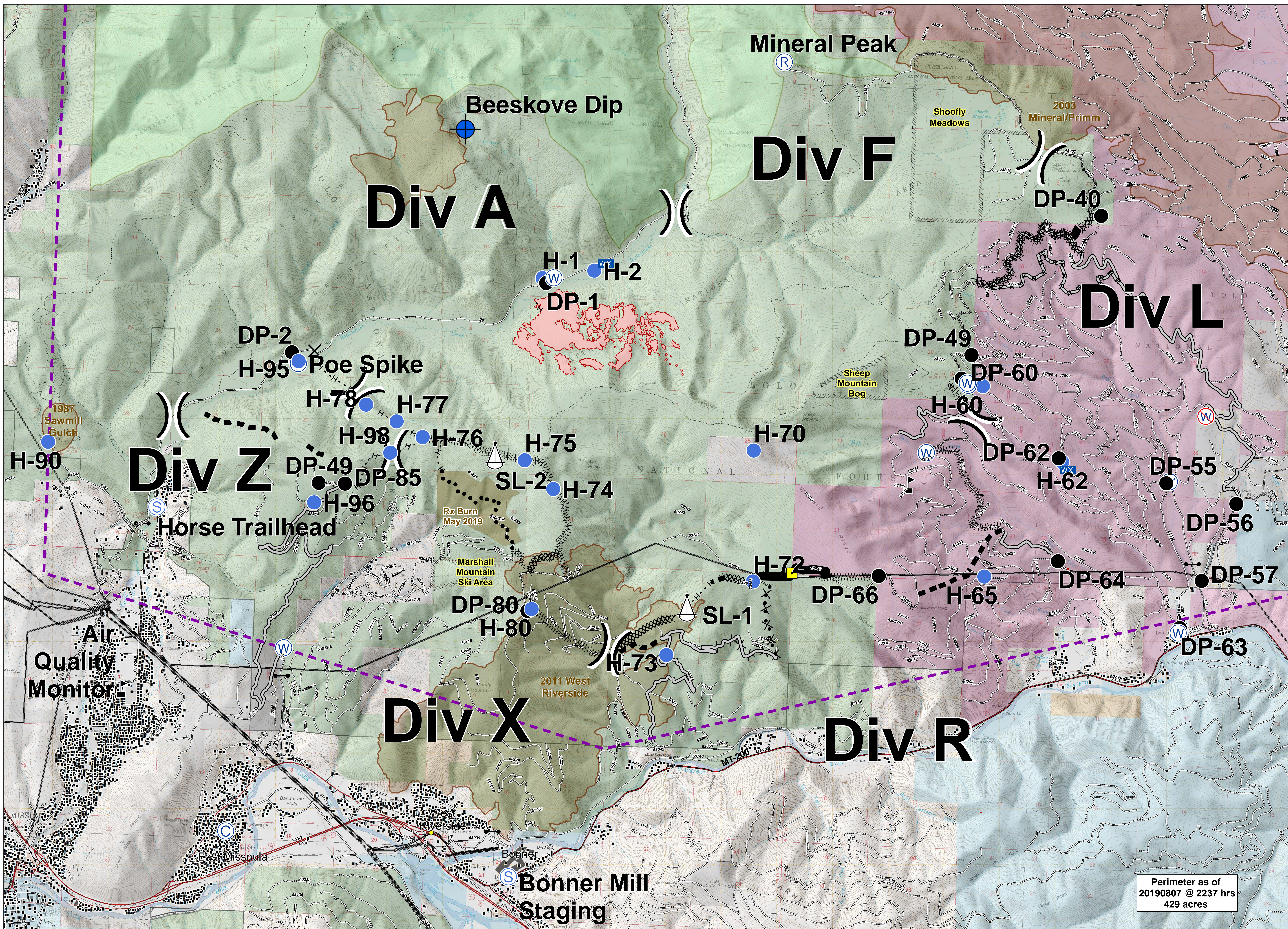


BEESEKOVES



Perimeter as of
20190807 @ 2237 hrs
429 acres



Briefing
MT-LNF-001232
August 11, 2019

- Structures
- Transmission Lines
- MT200
- Highway
- Road - Light Duty
- Road - Unimproved
- Trail
- Footbridge
- Under/Overpass Space - Rd/R.R.
- Road - Light Duty - Dirt
- Road - Light Duty - Paved
- Road - Light Duty - Gravel
- Fire History
- Wilderness Areas

- US Forest Service
- US Bureau of Land Management
- State of Montana
- The Nature Conservancy
- Local Government
- Landing or Log Deck

- Ⓒ Camp
- ⓧ Closure
- Ⓧ Dip Site
- Drop Point
- Gate
- Ⓜ Helispot
- Ⓜ Internet Access
- Ⓜ Landmark
- Ⓜ Mobile Weather Unit
- Ⓜ Repeater
- Ⓜ Sling Site
- Ⓜ Staging Area
- Ⓜ Water Source
- Ⓜ Restricted Water Source

- Ⓜ Value at Risk
- Ⓜ Division Break
- Uncontrolled Fire Edge
- Temporary Flight Restriction

- Access or Improved Road
- Completed Line
- Completed Dozer Line
- Completed Hand Line
- Road as Completed Line
- Line Break Completed

- Ⓜ Proposed Dozer Line
- Ⓜ Fire Break Planned or Incomplete
- Ⓜ Planned Fire Line
- Ⓜ Planned Secondary Line
- Ⓜ Wildfire Perimeter
- Ⓜ Special Resource Areas

