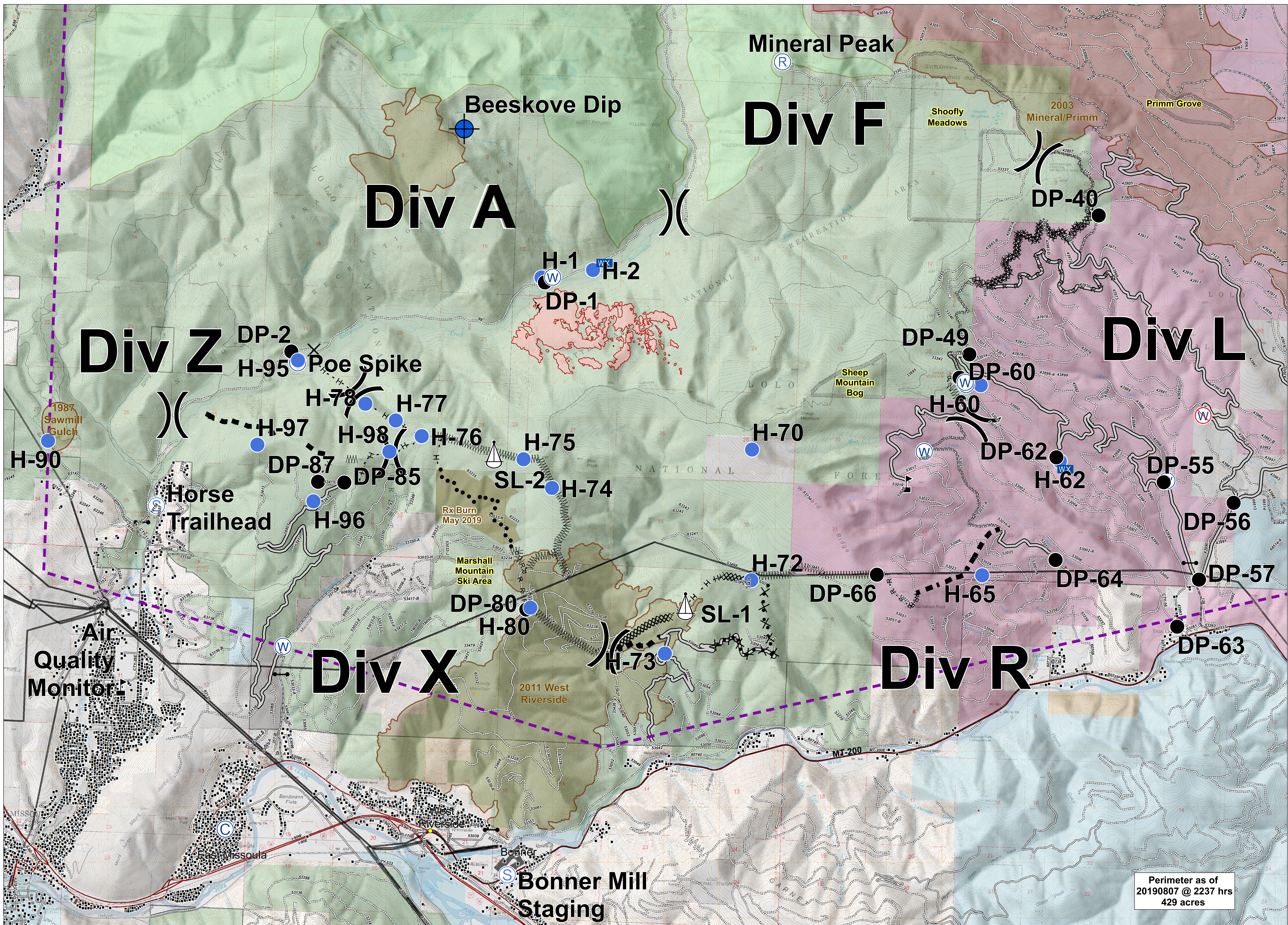


BEEESKOVVE



Perimeter as of 20190807 @ 2237 hrs
429 acres



Briefing
MT-LNF-001232
August 13, 2019

Camp	Gate	Sling Site	Value at Risk	Access or Improved Road	Proposed Dozer Line	Transmission Lines	Footbridge	Wilderness Areas	Special Resource Areas
Closure	Helispot	Staging Area	Division Break	Completed Dozer Line	Fire Break Planned or Incomplete	MT200	Under/Overpass Space -Rd/R.R.	US Forest Service	
Dip Site	Internet Access	Water Source	Uncontrolled Fire Edge	Completed Hand Line	Planned Fire Line	Highway	Road - Light Duty - Dirt	US Bureau of Land Management	
Drop Point	Mobile Weather Unit	Restricted Water Source	Temporary Flight Restriction	Road as Completed Line	Planned Secondary Line	Road - Light Duty	Road - Light Duty - Paved	State of Montana	
	Repeater	Line Break Completed		Wildfire Perimeter	Wildfire Perimeter	Road - Unimproved	Road - Light Duty - Gravel	The Nature Conservancy	
				Structures		Trail	Fire History	Local Government	

