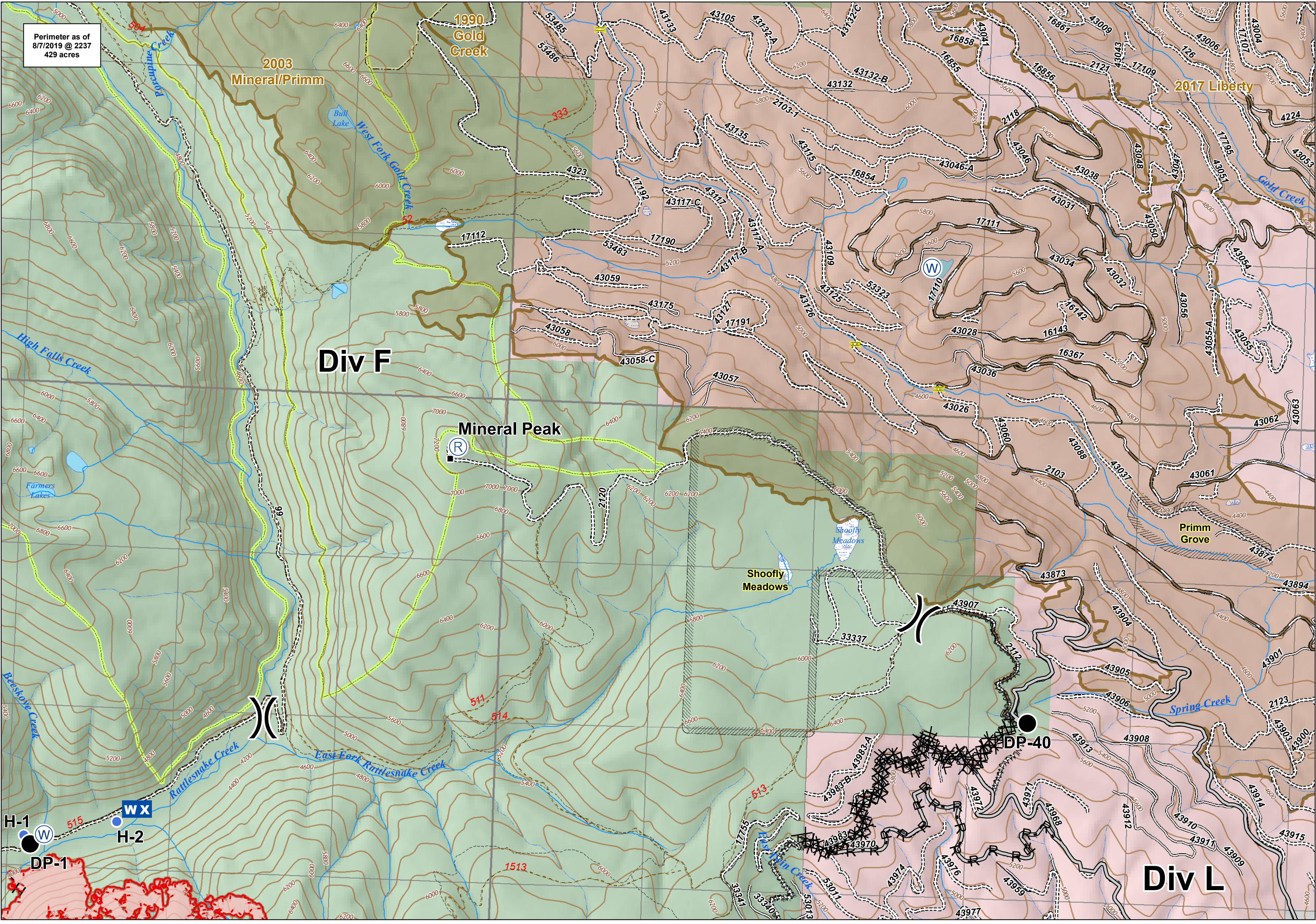


Perimeter as of
8/7/2019 @ 2237
429 acres



| | | | | | | | | | | | | | | | |
|--|---------------------|--|-------------------------------|--|----------------------------------|--|--------------------------------|--|------------------------|--|--------------------------|--|------------------------|--|-------------------|
| | Division Break | | Helispot | | Water Source | | R - R - Road as Completed Line | | TNC Bridges | | Road - Light Duty - Dirt | | Special Resource Areas | | Swamp/Marsh |
| | Drop Point | | Mobile Weather Unit | | Uncontrolled Fire Edge | | Access or Improved Road | | Trails | | Roads | | Fire History | | Wilderness Area |
| | Repeater | | Completed Dozer Line | | Fire Break Planned or Incomplete | | Road - Unimproved | | Trail | | Perennial Stream | | Roadless Area | | US Forest Service |
| | Completed Hand Line | | Wildfire Daily Fire Perimeter | | Intermittent Stream | | Lake/Pond | | The Nature Conservancy | | | | | | |

