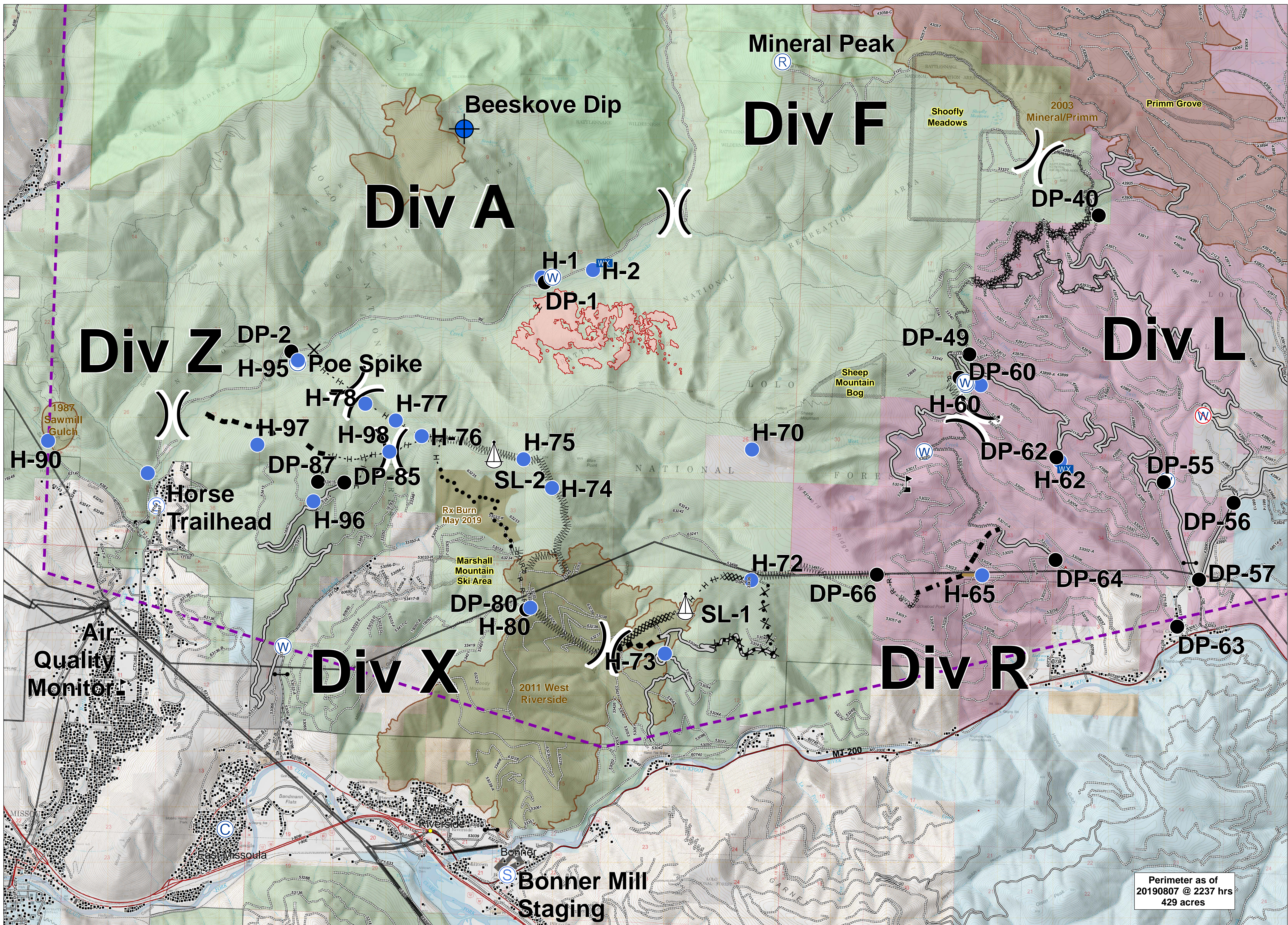


BEEKOVES



Perimeter as of 20190807 @ 2237 hrs
429 acres



Briefing
MT-LNF-001232
August 14, 2019

Camp	Gate	Sling Site	Value at Risk	Access or Improved Road	Line Break Completed	Structures	Trail	Fire History	Local Government
Closure	Helispot	Staging Area	Division Break	Repair Line	Proposed Dozer Line	Transmission Lines	Footbridge	Wilderness Areas	Special Resource Areas
Dip Site	Internet Access	Water Source	Uncontrolled Fire Edge	Completed Dozer Line	Fire Break Planned or Incomplete	MT200	Under/Overpass Space - Rd/R.R.	US Forest Service	US Bureau of Land Management
Drop Point	Mobile Weather Unit	Restricted Water Source	Temporary Flight Restriction	Completed Hand Line	Planned Fire Line	Highway	Road - Light Duty - Dirt	State of Montana	The Nature Conservancy
	Repeater			Planned Secondary Line	Wildfire Perimeter	Road - Light Duty	Road - Light Duty - Paved		
				Road as Completed Line		Road - Unimproved	Road - Light Duty - Gravel		

