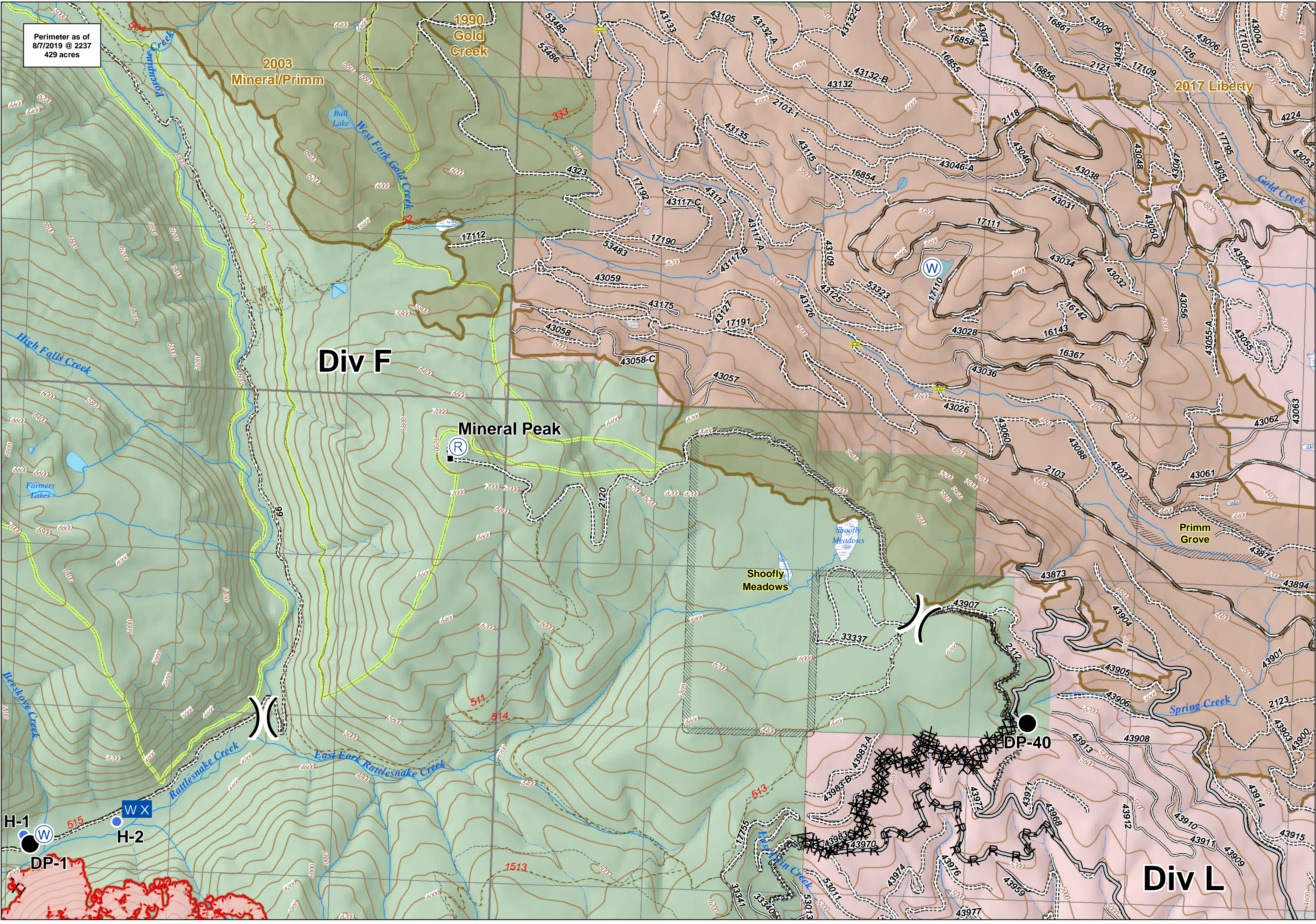


Perimeter as of  
8/7/2019 @ 2237  
429 acres



**Beeskove**  
**Div F**  
MT-LNF-001232  
August 14, 2019

- |                     |                               |                                  |                                |             |                          |                        |                   |
|---------------------|-------------------------------|----------------------------------|--------------------------------|-------------|--------------------------|------------------------|-------------------|
|                     | Helispot                      | Water Source                     | R - R - Road as Completed Line | TNC Bridges | Road - Light Duty - Dirt | Special Resource Areas | Swamp/Marsh       |
| Drop Point          | WX Mobile Weather Unit        | Uncontrolled Fire Edge           | Access or Improved Road        | Trails      | Roads                    | Fire History           | Wilderness Area   |
| Repeater            | Completed Dozer Line          | Fire Break Planned or Incomplete | Road - Unimproved              | Trail       | Perennial Stream         | Roadless Area          | US Forest Service |
| Completed Hand Line | Wildfire Daily Fire Perimeter |                                  | Intermittent Stream            | Lake/Pond   | The Nature Conservancy   |                        |                   |

