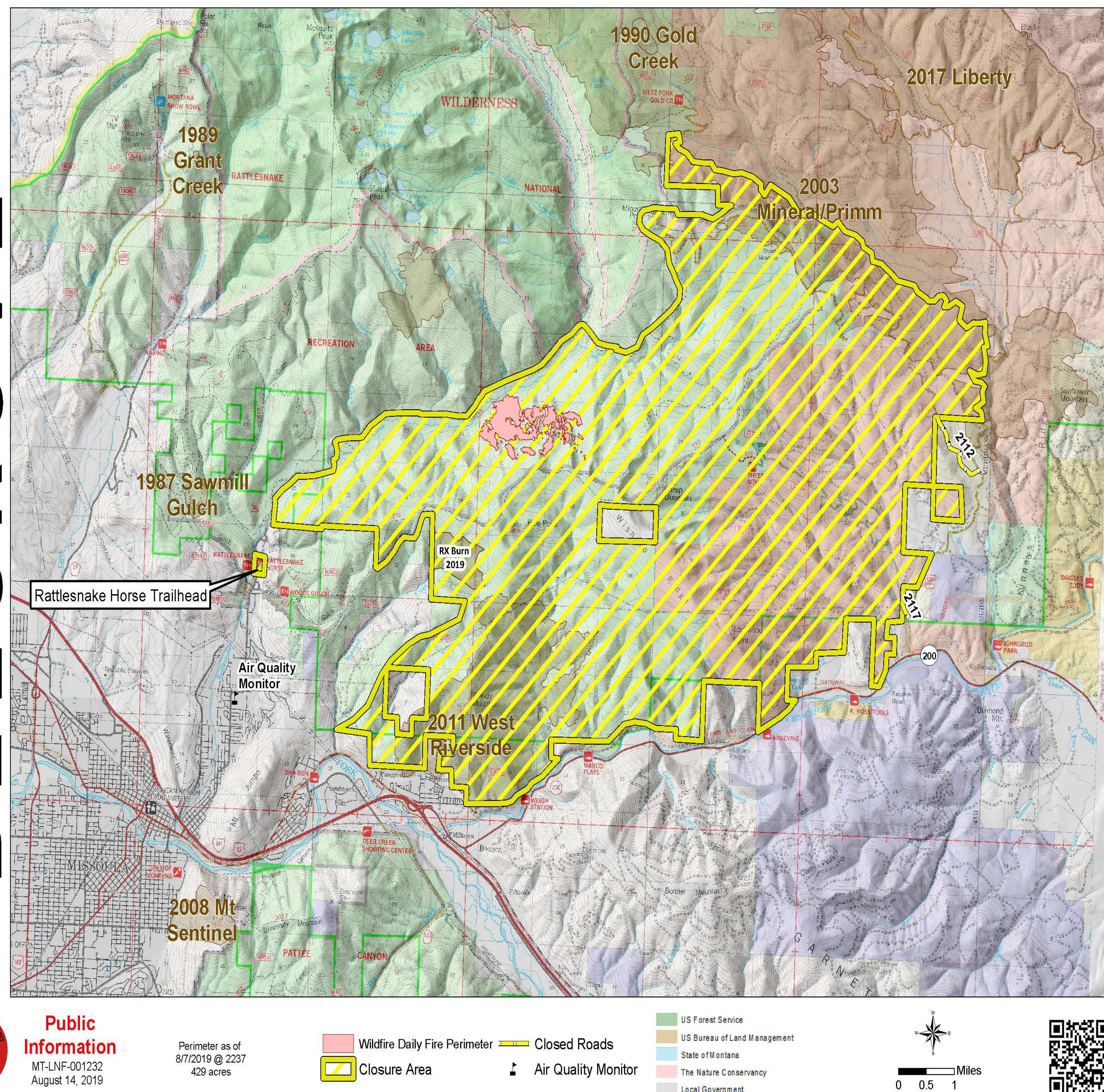


BEEKSKOVE FIRE INFORMATION

Wednesday 14, 2019

DAILY UPDATE

BEEKSKOVE FIRE MAP



QUICK FACTS

Size: 429 acres

Completion: 47 percent

Cause: Lightning, July 23, 2019

**Location: Rattlesnake Creek
Drainage – five miles NE of the
main Rattlesnake Trailhead**



Wildfire Update

Contact: Public Information Officers
Phone: 406-209-8102

August 14, 2019

What: Beeskovve Fire
Cause: Lightning July 23, 2019 **Acres:** 429 acres **Completion:** 47%
Location: Rattlesnake Creek Drainage – 5 miles NE of the main Rattlesnake Trailhead

Yesterday, firefighters continued work on the construction of indirect firelines to the west and east of the fire. They also began assessment for erosion control and other suppression rehabilitation needs. Smoke was observed on the fire and hot spots were detected in areas of heavy fuels where they were protected from the rain.

Today, firefighters will complete construction of fuel breaks and indirect lines to the east moving toward the Highway 200 corridor. A structure assessment plan is now in place based on the assessment of 512 homes and structures within the wildland urban interface in the fire vicinity.

Downsizing of fire crews and heavy equipment has commenced and all but one helicopter has been released.

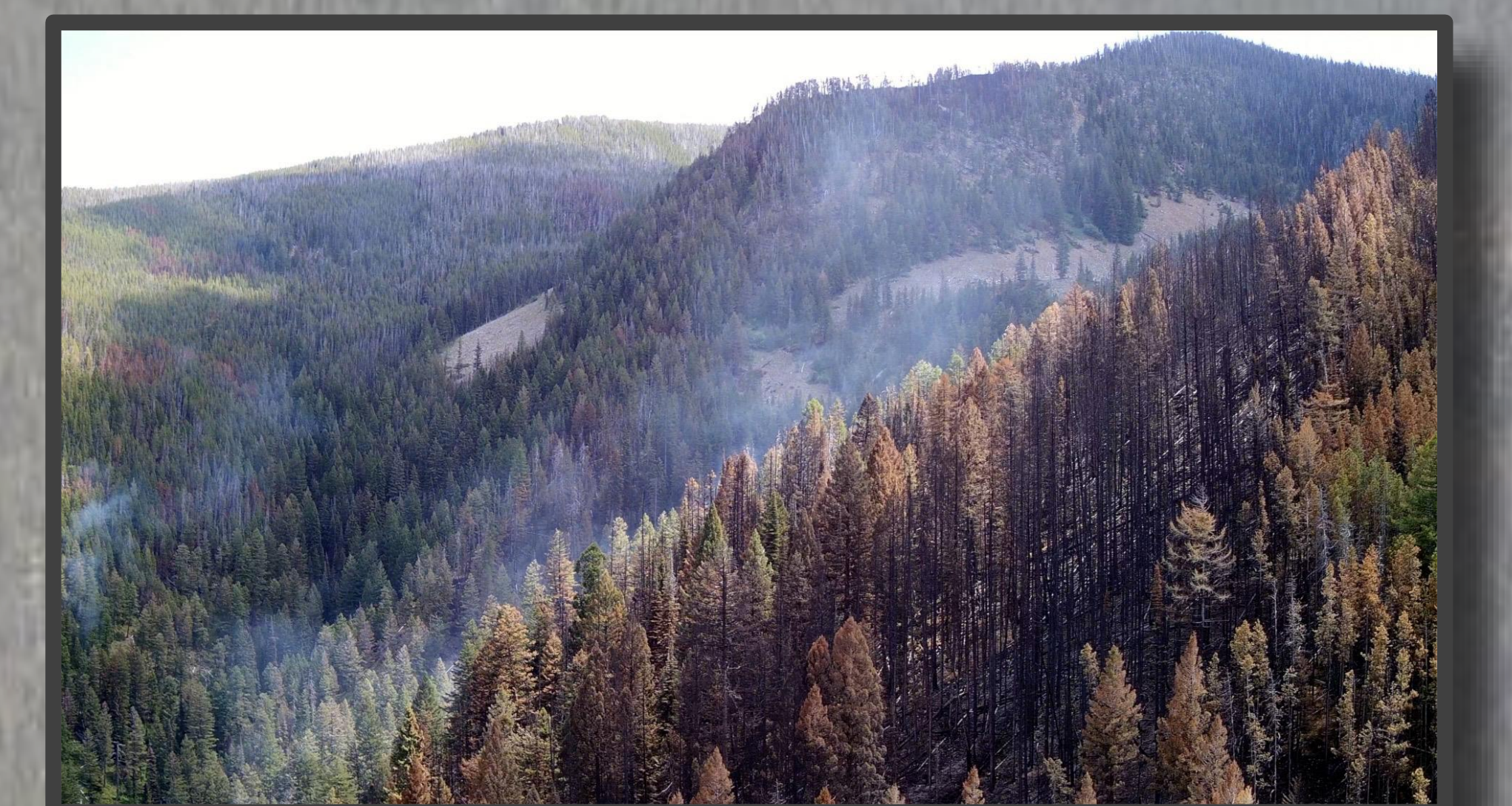
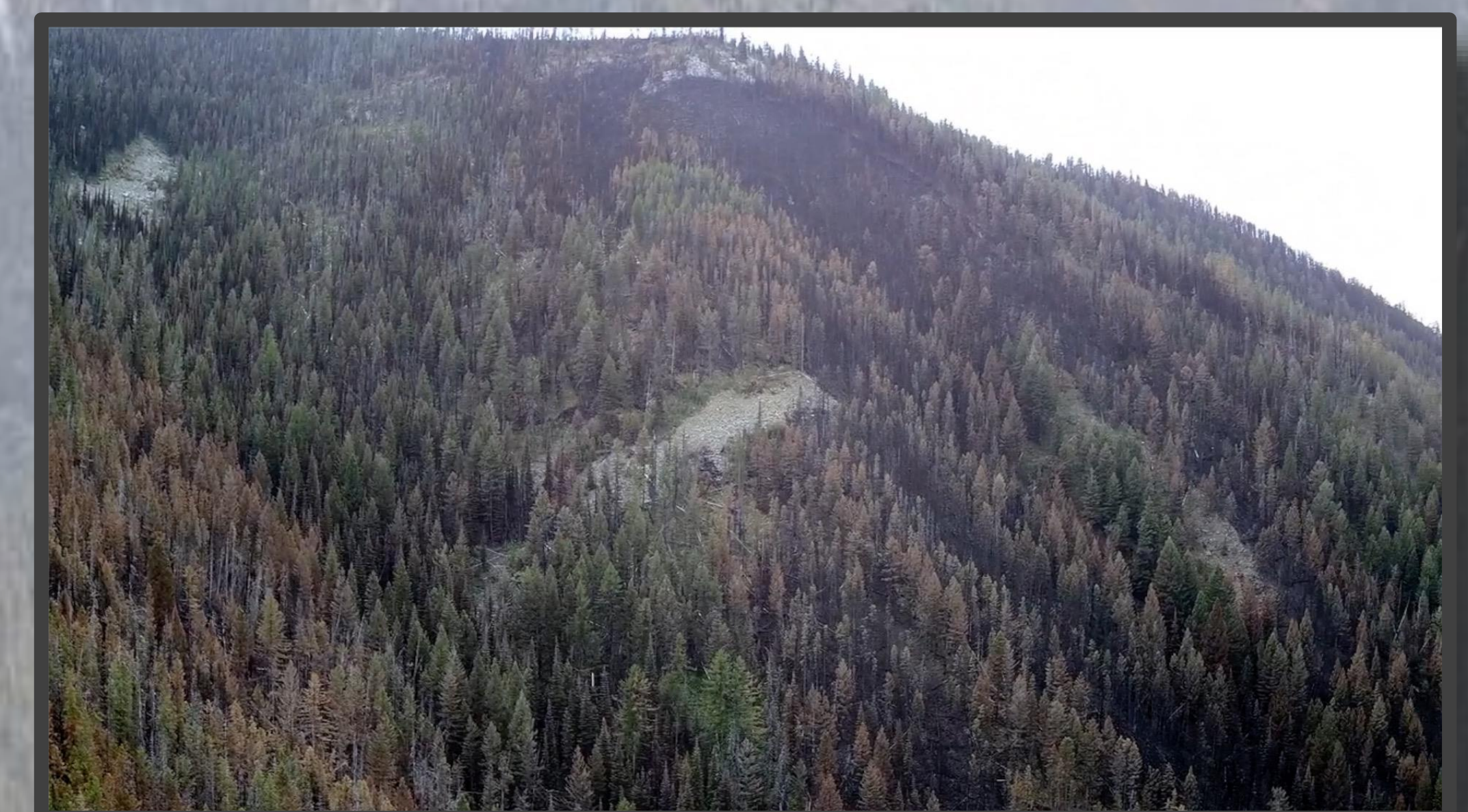
Forecasted Weather: Today is expected to be drier with sunny conditions. Temperatures will increase with highs in the mid 80s expected on the fire. Relative humidities will be 25-30%. Westerly winds of 10-15 mph are expected in the afternoon.

Closures: The following areas are closed due to Beeskovve Fire suppression operations:

- Woody Mountain – Johnson Gulch area is closed to recreational use.
- Sheep Mountain Trailhead is closed, along with access to the trailhead via East Twin Creek Road FS 2117 and Upper Twin Creek Road FS 2119.
- Mineral Peak Lookout is closed as well as access to the lookout via the East Fork Rattlesnake Road FS 2112 and Mineral Peak Lookout Road 2120.
- Upper Twin Creek/Sheep Mountain Spur Trail #505 is closed.
- T13N, R17W - all The Nature Conservancy lands.
- T14N, R17W – all The Nature Conservancy lands that lie west of the Gold Creek Road #126, north to the junction with West Fork Gold Creek Road #2103, then southwest of the West Fork Gold Creek Road #2103.
- T15N, R17W – all The Nature Conservancy lands that lie southwest of the West Fork Gold Creek Roads #2103 and #4323.

Safety: Continue to watch for fire traffic on roads leading to the fire area. Please, use caution at all times, control your speed and be extra careful on blind corners.

For the latest fire information and photos, visit <https://inciweb.nwcg.gov/incident/6458/>. Stay current with the Lolo National Forest on Facebook@lolonationalforest and on Twitter @LoloNF.



CLOSURES

ATTENTION: Area, Road and Trail Closures in the vicinity of the Beeskovve Fire



Areas, roads and trails are closed to provide protection to visitors from safety hazards associated with the Beeskovve Fire and its associated suppression work. The Closure area is shown on the map above in yellow. Closure Orders and maps are available to view and download at: <https://inciweb.nwcg.gov/incident/closures/6458>.

ATTENTION TRAIL USERS

You will encounter fire traffic on roads leading to the fire area. Muddy roads from rainfall increases risky driving conditions.

- **Use caution at all times**
- **Control your speed**
- **Be extra careful on blind corners**

Images within the eastern perimeter of the fire taken on Saturday, August 10. Note the mosaic pattern of where the fire burned, steepness of the slopes, and the amount of downed timber.

