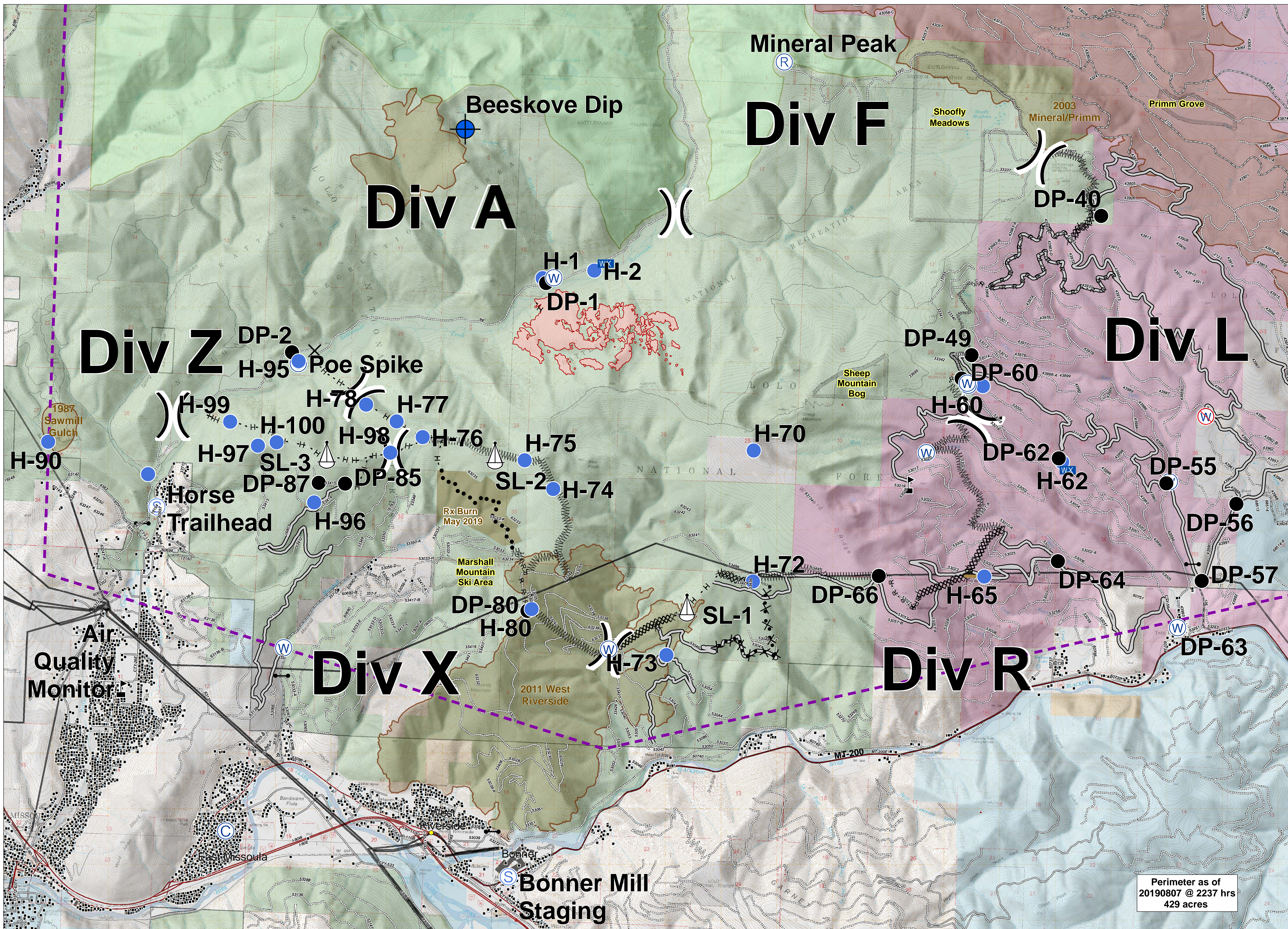


BEEESKOVVE



Perimeter as of
20190807 @ 2237 hrs
429 acres



Briefing
MT-LNF-001232
August 16, 2019

Camp	Gate	Sling Site	Value at Risk	Access or Improved Road	Line Break Completed	Transmission Lines	Footbridge	Wilderness Areas	Special Resource Areas
Closure	Helispot	Staging Area	Division Break	Repair Line	Proposed Dozer Line	MT200	Under/Overpass Space - Rd/R.R.	US Forest Service	
Dip Site	Internet Access	Water Source	Uncontrolled Fire Edge	Completed Dozer Line	Fire Break Planned or Incomplete	Highway	Road - Light Duty - Dirt	US Bureau of Land Management	
Drop Point	Mobile Weather Unit	Restricted Water Source	Temporary Flight Restriction	Completed Hand Line	Planned Secondary Line	Road - Light Duty	Road - Light Duty - Paved	State of Montana	
	Repeater			Wildfire Perimeter	Wildfire Perimeter	Road - Unimproved	Road - Light Duty - Gravel	The Nature Conservancy	
				Road as Completed Line	Structures	Trail	Fire History	Local Government	

