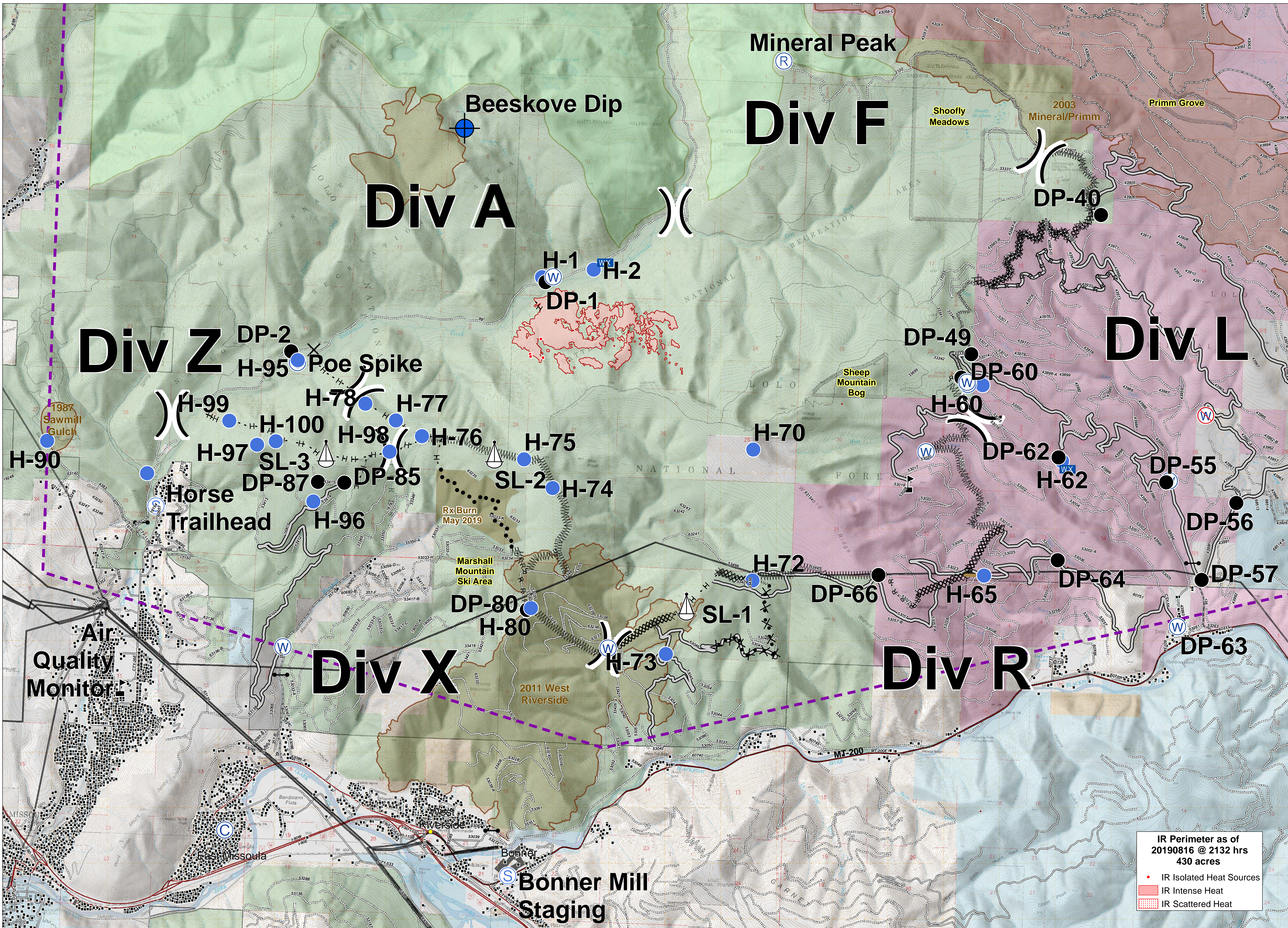


BEEKOVES



IR Perimeter as of 20190816 @ 2132 hrs 430 acres

- IR Isolated Heat Sources
- IR Intense Heat
- ▨ IR Scattered Heat



Briefing
MT-LNF-001232
August 17, 2019

- | | | | | | | | | | |
|--------------|-----------------------|---------------------------|--------------------------------|------------------------------|------------------------------------|----------------------|---------------------------------|--------------------------------|--------------------------|
| Ⓒ Camp | — Gate | ⚓ Sling Site | 🎵 Value at Risk | — Access or Improved Road | 🔧 Line Break Completed | — Transmission Lines | — Footbridge | 🌿 Wilderness Areas | 🏠 Special Resource Areas |
| ✕ Closure | ● Helispot | Ⓢ Staging Area | ⌋ Division Break | — Repair Line | ✂ Proposed Dozer Line | — MT200 | — Under/Overpass Space -Rd/R.R. | 🌳 US Forest Service | |
| Ⓧ Dip Site | 📶 Internet Access | 🚰 Water Source | | 🔗 Completed Dozer Line | 🔥 Fire Break Planned or Incomplete | — Highway | — Road - Light Duty - Dirt | 🏡 US Bureau of Land Management | |
| ● Drop Point | 🚰 Mobile Weather Unit | 🚰 Restricted Water Source | 🚧 Uncontrolled Fire Edge | — Completed Hand Line | ⋯ Planned Secondary Line | — Road - Light Duty | — Road - Light Duty - Paved | 🏛 State of Montana | |
| | Ⓡ Repeater | | 🚧 Temporary Flight Restriction | — R - Road as Completed Line | 🏠 Wildfire Perimeter | ⋯ Road - Unimproved | — Road - Light Duty - Gravel | 🌿 The Nature Conservancy | |
| | | | | | • Structures | ⋯ Trail | 🔥 Fire History | 🏠 Local Government | |

0 0.5 1 Miles