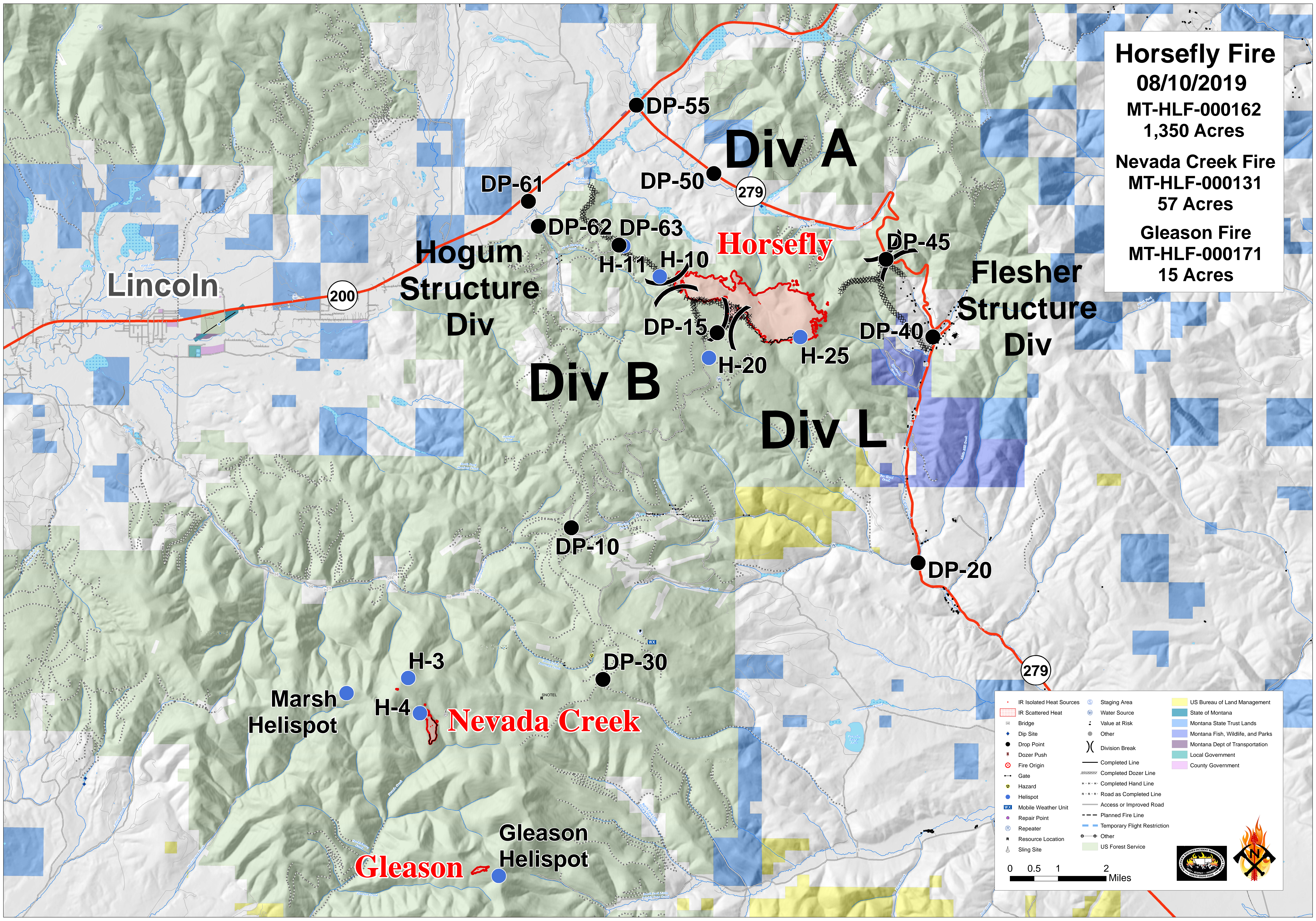


**Horsefly Fire**  
 08/10/2019  
 MT-HLF-000162  
 1,350 Acres

**Nevada Creek Fire**  
 MT-HLF-000131  
 57 Acres

**Gleason Fire**  
 MT-HLF-000171  
 15 Acres



• IR Isolated Heat Sources	⊙ Staging Area	■ US Bureau of Land Management
▨ IR Scattered Heat	⊕ Water Source	■ State of Montana
⊠ Bridge	⊖ Value at Risk	■ Montana State Trust Lands
◆ Dip Site	● Other	■ Montana Fish, Wildlife, and Parks
● Drop Point	⌋ Division Break	■ Montana Dept of Transportation
⊠ Dozer Push	⌌ Completed Line	■ Local Government
⊠ Fire Origin	⌌ Completed Dozer Line	■ County Government
⊠ Gate	⌌ Completed Hand Line	
⊠ Hazard	⌌ Road as Completed Line	
⊠ Mobile Weather Unit	⌌ Access or Improved Road	
⊠ Repair Point	⌌ Planned Fire Line	
⊠ Repeater	⌌ Temporary Flight Restriction	
⊠ Resource Location	⊠ Other	
⊠ Sling Site	⊠ US Forest Service	

0 0.5 1 2 Miles