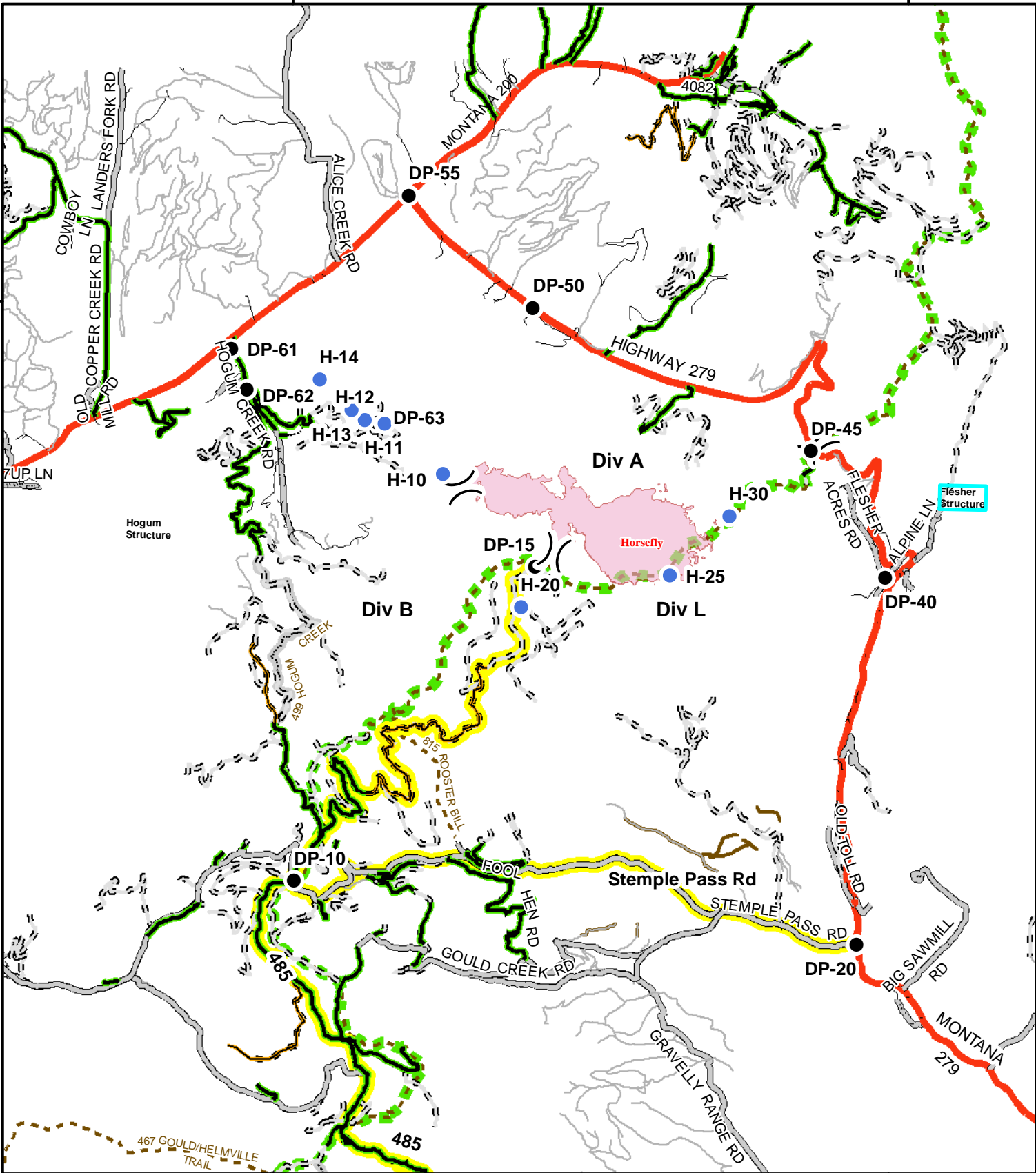


112°30'0"W

112°20'0"W

47°0'0"N

47°0'0"N



112°30'0"W

112°20'0"W

# Horsefly

## Transportation



MT-HLF-000131  
August 16, 2019

- Drop Point
- Helispot
- )) Division Break
- Wildfire Daily Fire Perimeter
- FS Open
- FS Seasonally Restricted
- Other Public Roads
- CITY-COUNTY
- LOCAL ACCESS
- NHS NON-INTERSTATE
- SECONDARY
- USFS
- BLM
- TravelRoutes
- No Motorized Access
- Trails Open to Wheeled Vehicles Only < 50" in Width, Yearlong
- Trails Open to Wheeled Vehicles Only < 50" or Less in Width, Seasonal
- Continental Divide Trail

