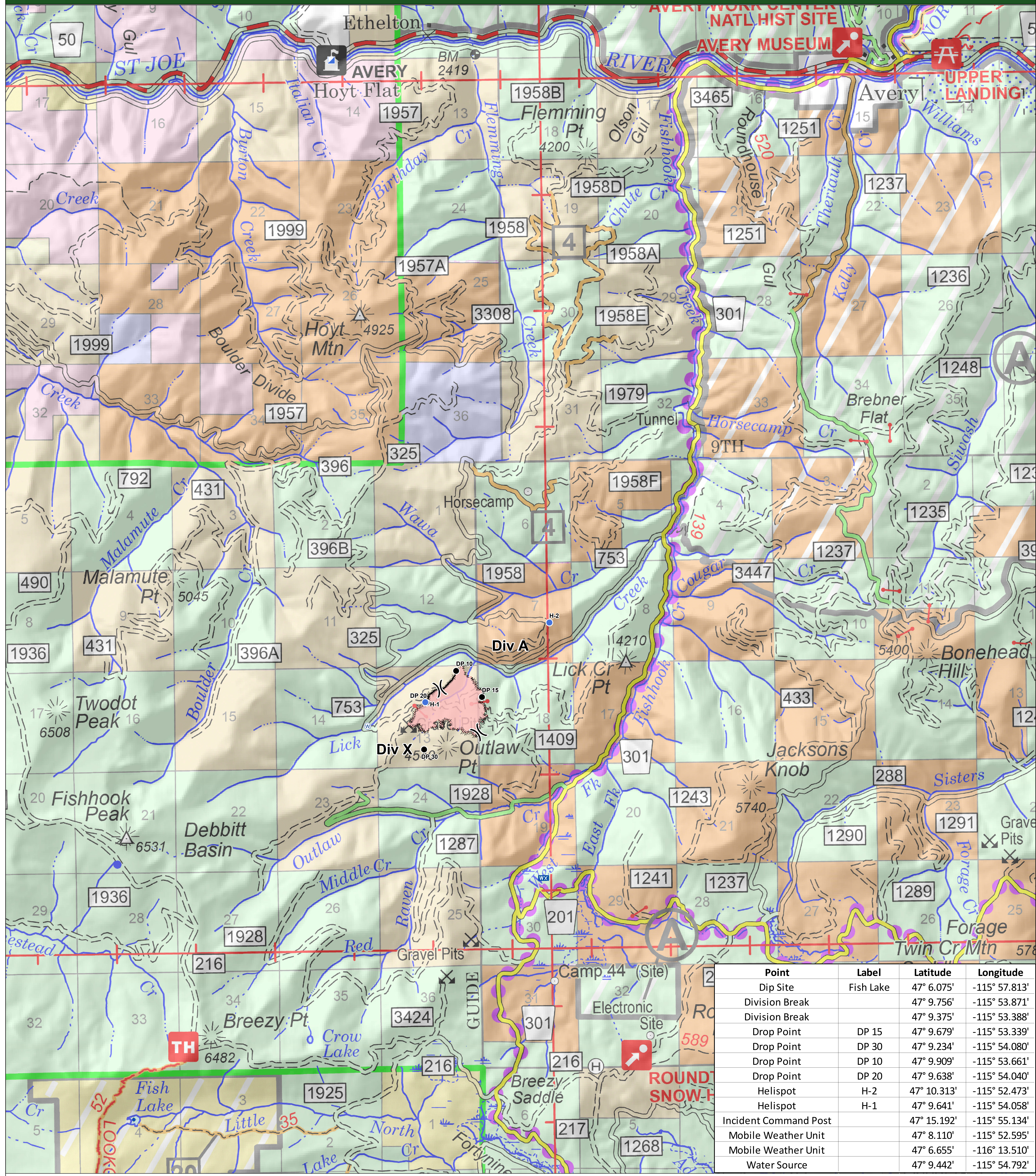


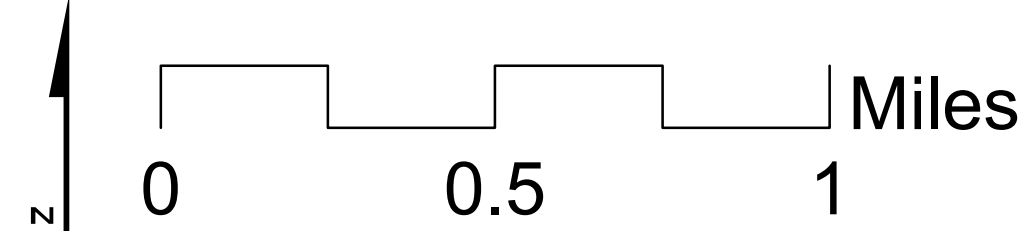
Lick Creek Fire - Air Operations Map



Point	Label	Latitude	Longitude
Dip Site	Fish Lake	47° 6.075'	-115° 57.813'
Division Break		47° 9.756'	-115° 53.871'
Division Break		47° 9.375'	-115° 53.388'
Drop Point	DP 15	47° 9.679'	-115° 53.339'
Drop Point	DP 30	47° 9.234'	-115° 54.080'
Drop Point	DP 10	47° 9.909'	-115° 53.661'
Drop Point	DP 20	47° 9.638'	-115° 54.040'
Helispot	H-2	47° 10.313'	-115° 52.473'
Helispot	H-1	47° 9.641'	-115° 54.058'
Incident Command Post		47° 15.192'	-115° 55.134'
Mobile Weather Unit		47° 8.110'	-115° 52.595'
Mobile Weather Unit		47° 6.655'	-116° 13.510'
Water Source		47° 9.442'	-115° 54.792'

Lick Creek Fire
ID-IPF-000412
Aug. 9th, 2019
179 acres

- Dip Site
- Drop Point
- Helispot
- Incident Command Post
- wx Mobile Weather Unit
- ⊙ Water Source
-) Division Break
- Completed Line
- ⊘ Completed Dozer Line
- Completed Hand Line
- Road as Completed Line
- Wildfire Daily Fire Perimeter



This product is reproduced from geospatial information prepared by the Idaho Panhandle National Forest. Geospatial information and GIS product accuracy may vary. Using GIS products for purposes other than those for which they were created may yield inaccurate or misleading results. Idaho Panhandle National Forest reserves the right to correct, update, modify or replace GIS products without notification.



NAD 1983 UTM 11N
Decimal Degrees Minutes
Prepared by R. Grow
Aug. 9th, 2019