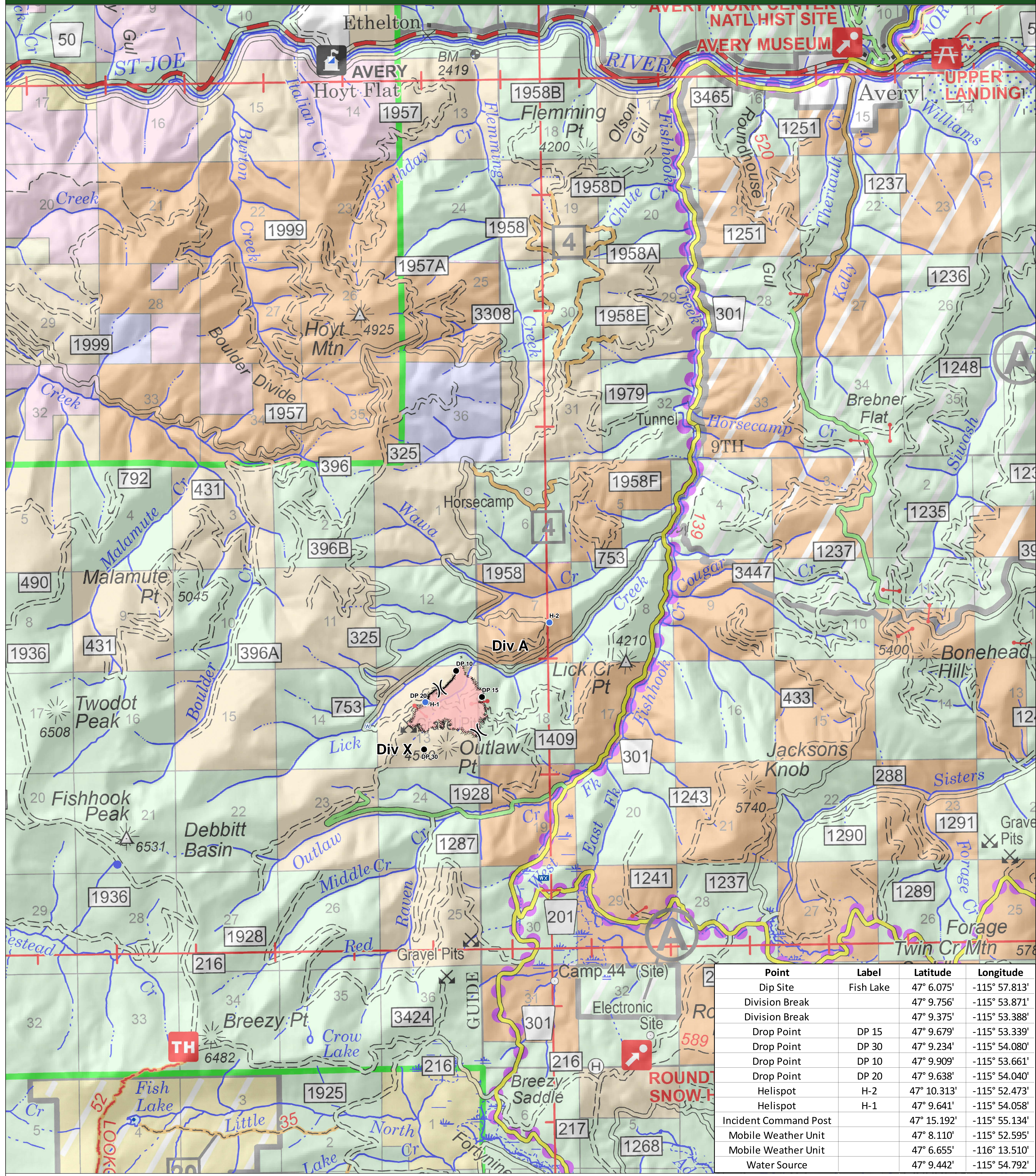


Lick Creek Fire - Air Operations Map



Lick Creek Fire
ID-IPF-000412
Aug. 10th, 2019
179 acres

- Dip Site
- Drop Point
- Helispot
- Incident Command Post
- ✈ Mobile Weather Unit
- ✂ Road Repair
- ⊕ Water Source
- ⌘ Division Break
- Completed Line
- ⋯ Completed Hand Line
- ⋯ Completed Dozer Line
- ⋯ Road as Completed Line
- Wildfire Daily Fire Perimeter



This product is reproduced from geospatial information prepared by the Idaho Panhandle National Forest. Geospatial information and GIS product accuracy may vary. Using GIS products for purposes other than those for which they were created may yield inaccurate or misleading results. Idaho Panhandle National Forest reserves the right to correct, update, modify or replace GIS products without notification.



NAD 1983 UTM 11N
Decimal Degrees Minutes
Prepared by R. Grow
Aug. 10th, 2019