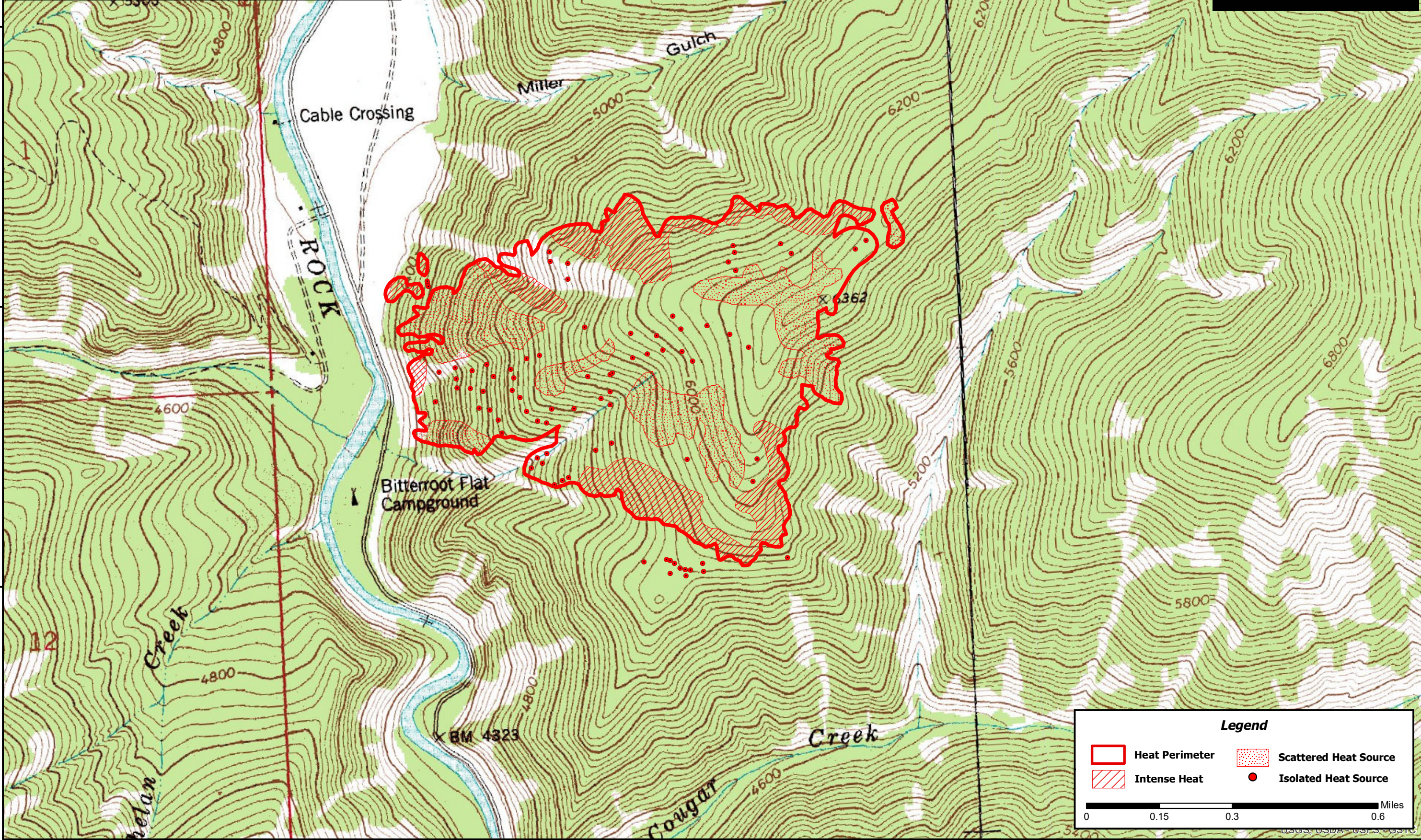


113°47'0"W 113°46'30"W 113°46'0"W 113°45'30"W 113°45'0"W 113°44'30"W 113°44'0"W





Miller Gulch
Incident # - MT-LNF-001782
Infrared Imagery Map
Imagery Flown : September 4, 2019 - 2301 (MDT)
Interpreted Acres: 297 Acres
IRIN: Bob Brantlinger



113°47'30"W 113°47'0"W 113°46'30"W 113°46'0"W 113°45'30"W 113°45'0"W 113°44'30"W 113°44'0"W

46°29'0"N
46°28'30"N
46°28'0"N
46°27'30"N

Legend

	Heat Perimeter		Scattered Heat Source
	Intense Heat		Isolated Heat Source

0 0.15 0.3 0.6 Miles

USGS, USDA, USFS, USGS