

**MOUNTAIN VIEW FIRE
STAKEHOLDER MAP**

**MT-LG03-190460
AUGUST 30, 2019**

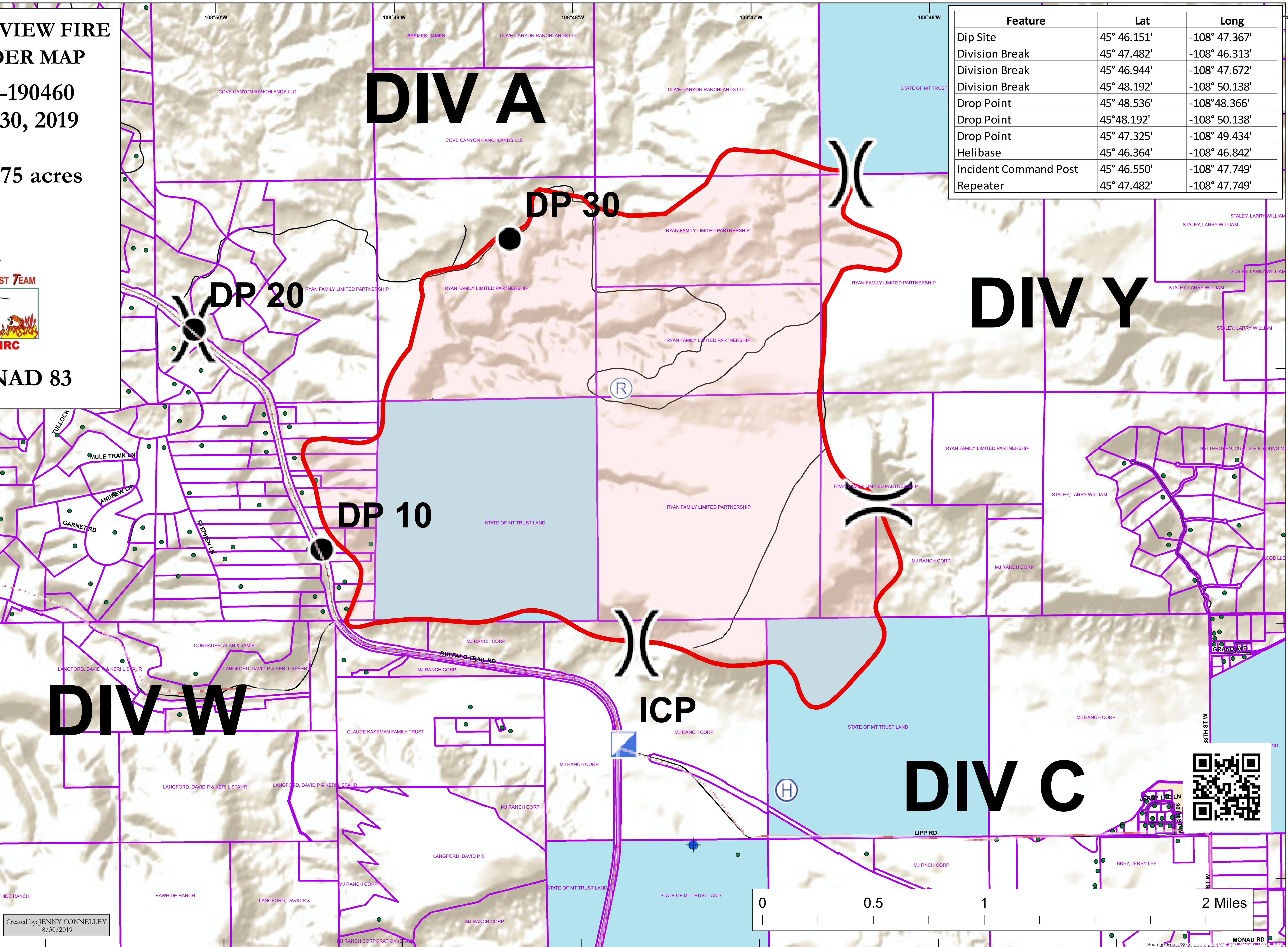
Approx. 2775 acres



MT SP NAD 83

Legend

- Dip Site
- Drop Point
- Helibase
- Incident Command Post
- Repeater
- Division Break
- Uncontrolled Fire Edge
- Wildfire Daily Fire Perimeter
- FFR
- Structures
- Owner/Parcel
- <all other values>
- OWNER**
- Montana State Trust Lands
- Roads
- Incident_Roads



Feature	Lat	Long
Dip Site	45° 46.151'	-108° 47.367'
Division Break	45° 47.482'	-108° 46.313'
Division Break	45° 46.944'	-108° 47.672'
Division Break	45° 48.192'	-108° 50.138'
Drop Point	45° 48.536'	-108° 48.366'
Drop Point	45° 48.192'	-108° 50.138'
Drop Point	45° 47.325'	-108° 49.434'
Helibase	45° 46.364'	-108° 46.842'
Incident Command Post	45° 46.550'	-108° 47.749'
Repeater	45° 47.482'	-108° 47.749'

Created by: JENNY CONNELLEY
8/30/2019

